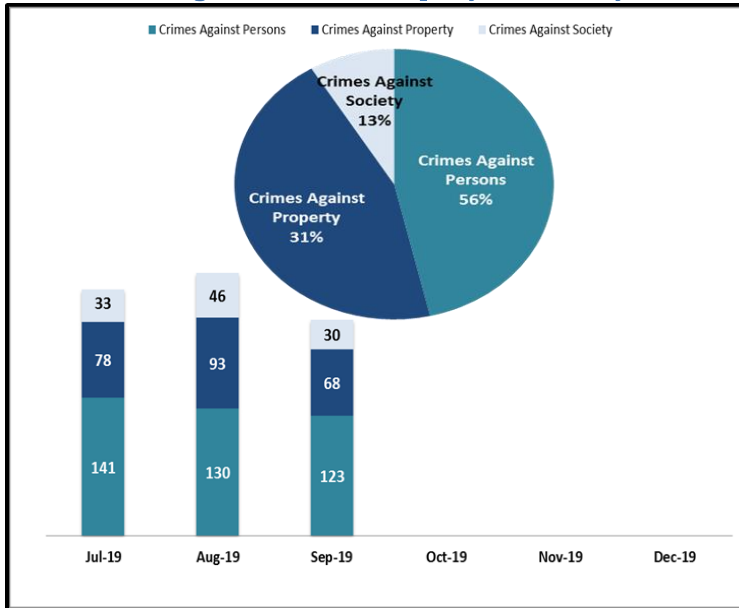


KEY PERFORMANCE INDICATORS

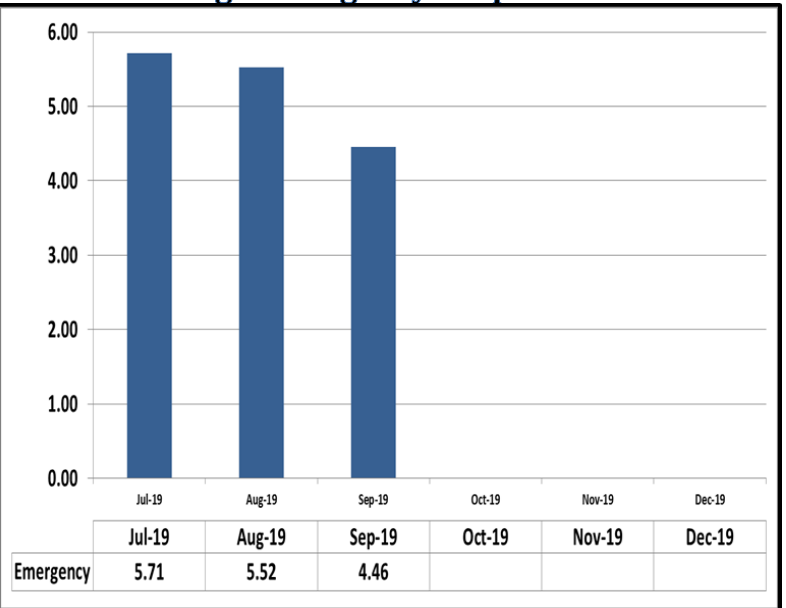
SEPTEMBER 2019

Attachment C

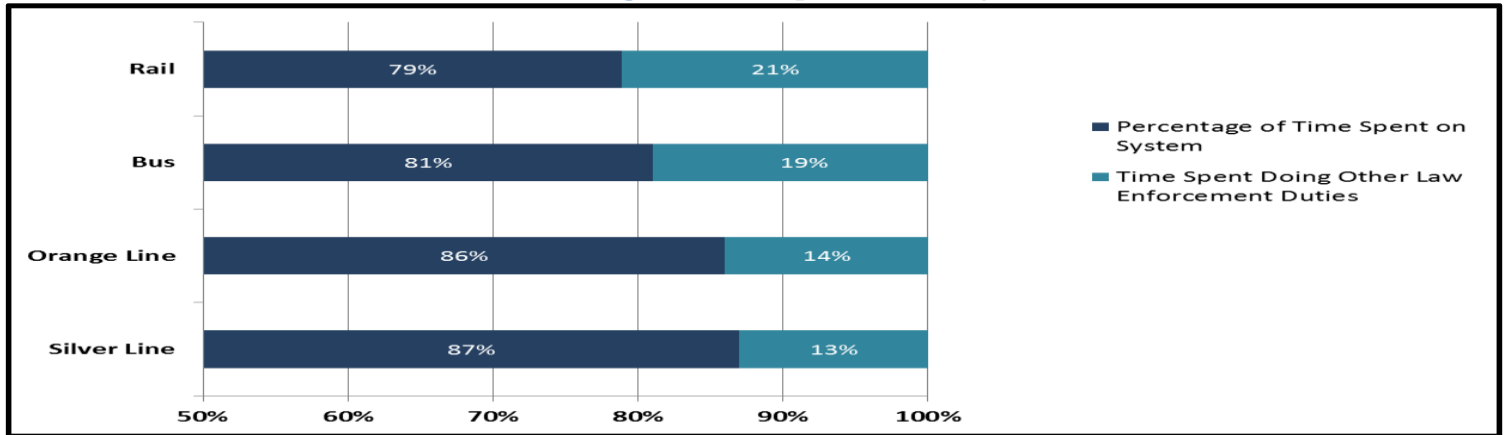
Crimes Against Persons, Property, and Society



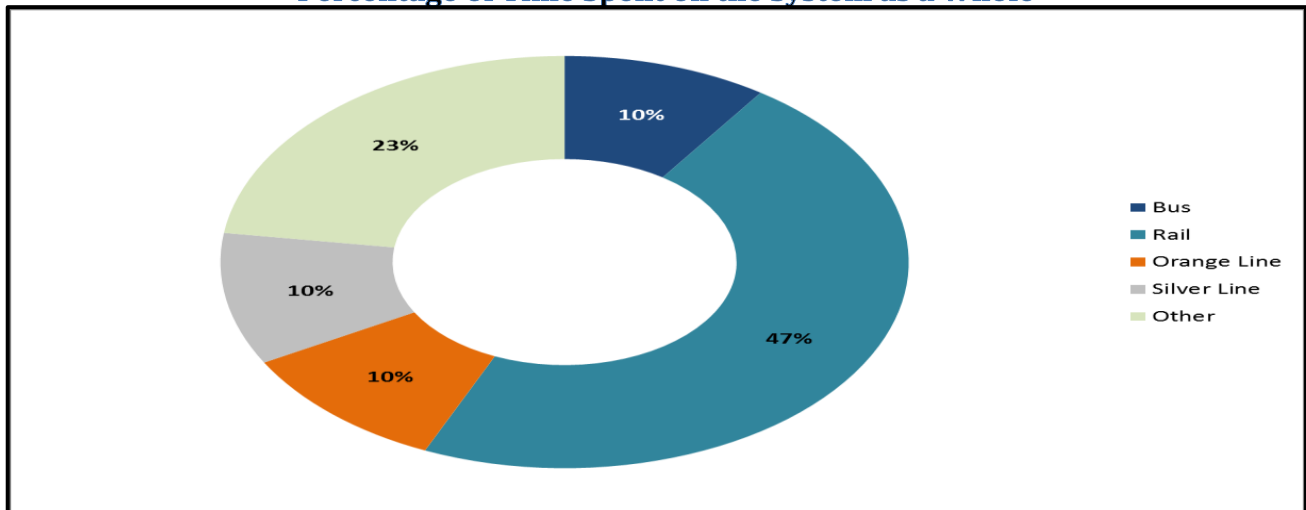
Average Emergency Response Times



Percentage of Time Spent on the System



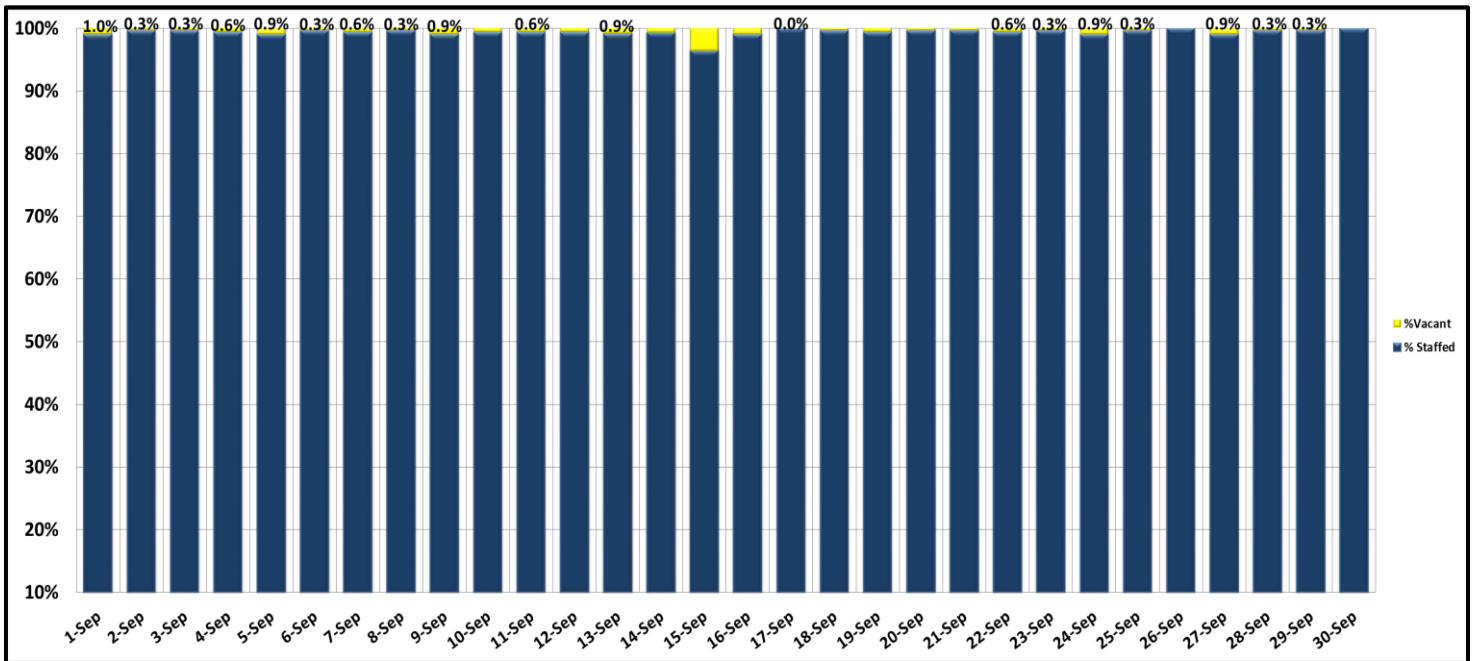
Percentage of Time Spent on the System as a Whole



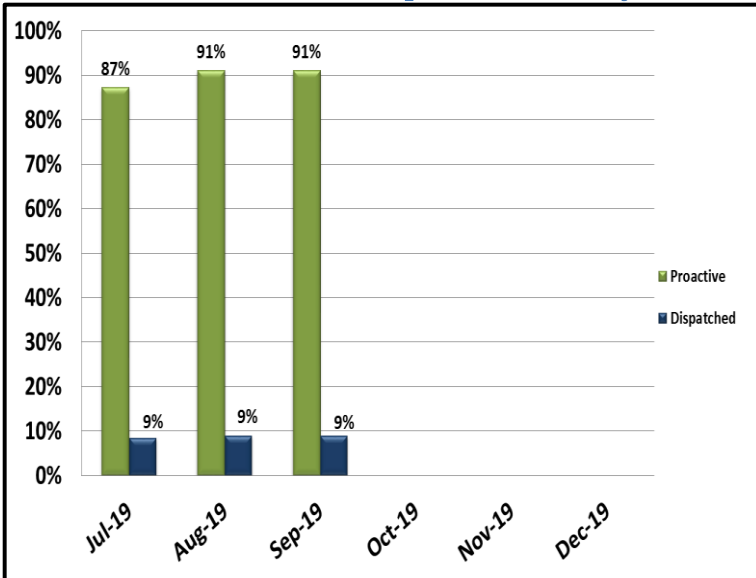
KEY PERFORMANCE INDICATORS

SEPTEMBER 2019

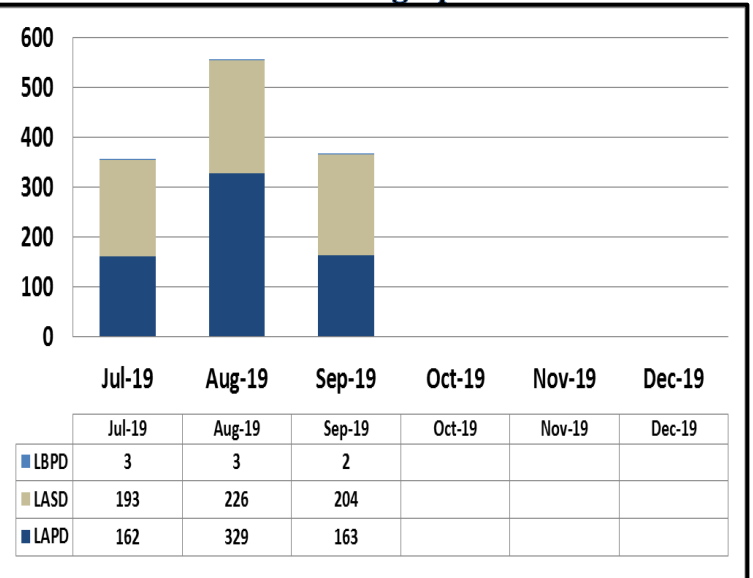
Ratio of Staffing Levels vs Vacant Assignments



Ratio of Proactive vs Dispatched Activity



Grade Crossing Operations



Grade Crossing Operation Locations September:

1. Blue Line Stations (123)
2. Expo Line Stations (83)
3. Gold Line Stations (163)