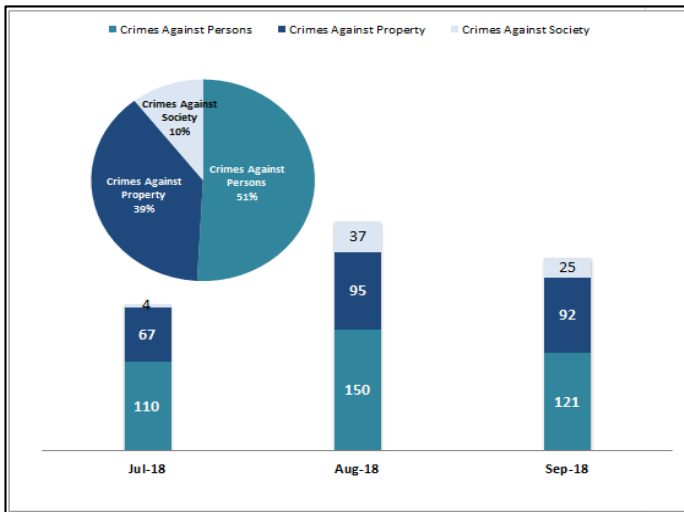


Key Performance Indicators

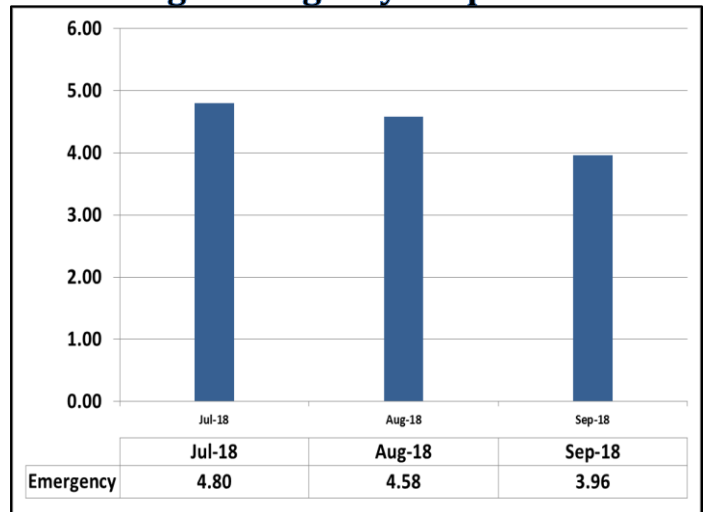
September 2018

Attachment C

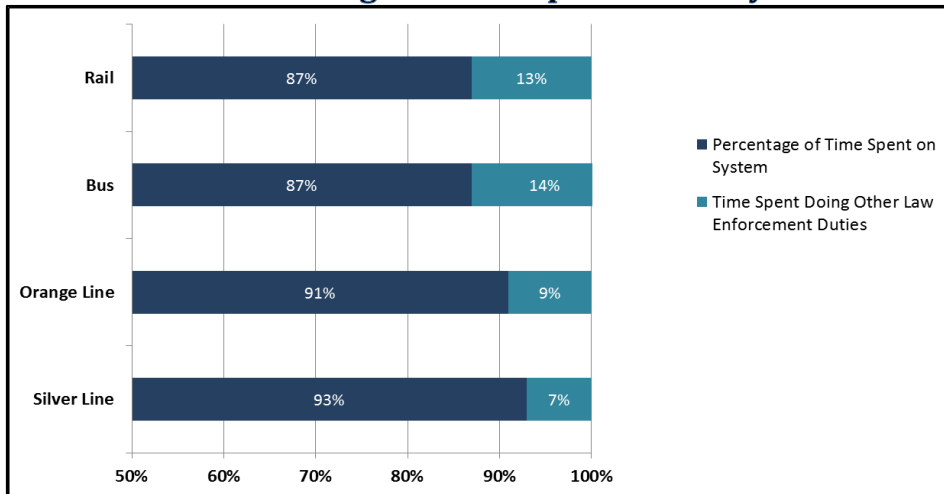
Crimes Against Persons, Property, and Society



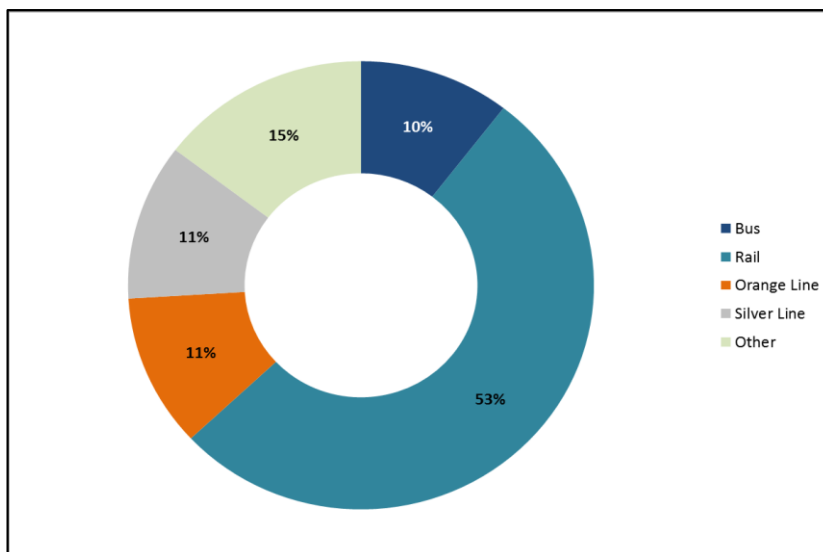
Average Emergency Response Times



Percentage of Time Spent on the System



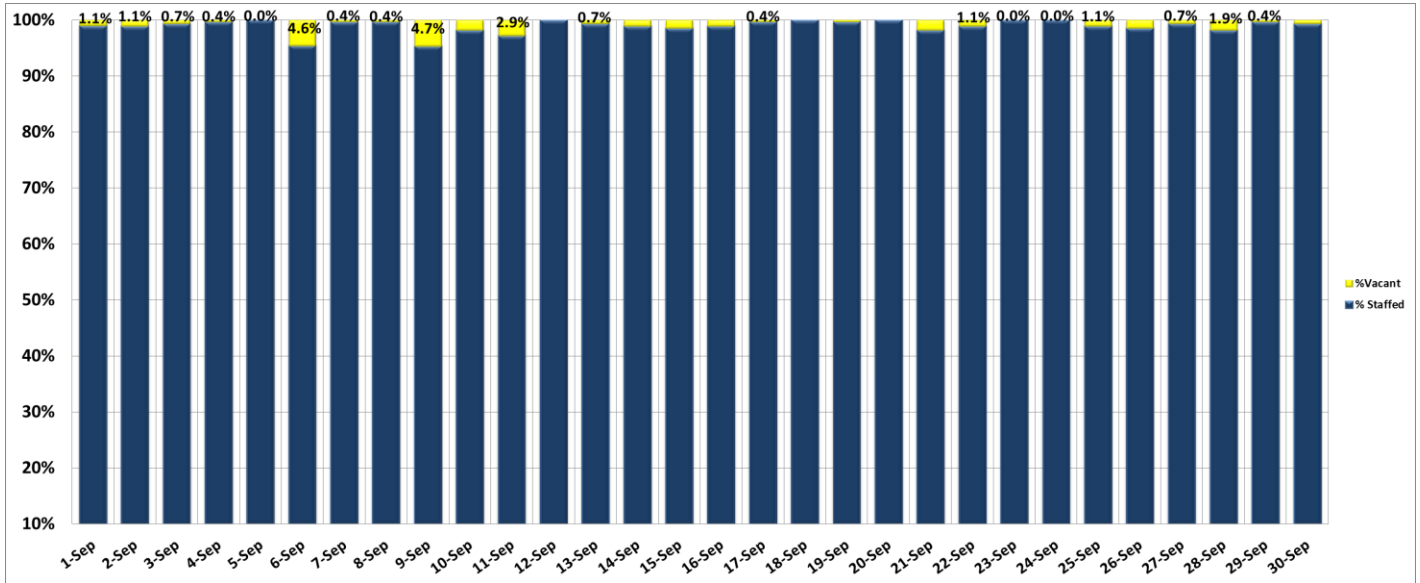
Percentage of Time Spent on the System as a Whole



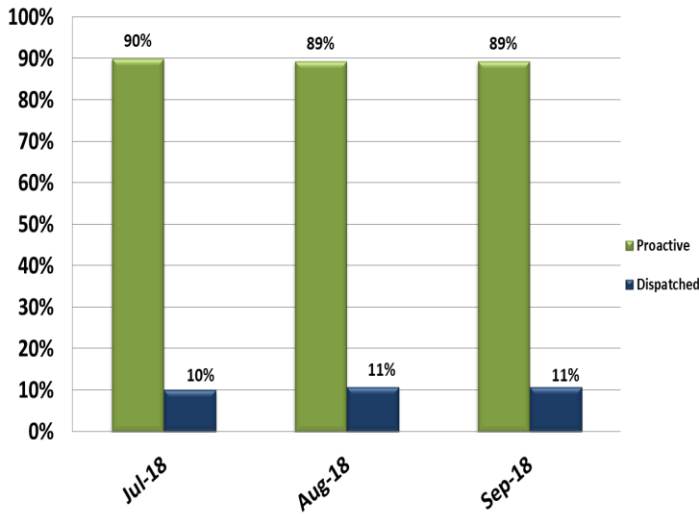
Key Performance Indicators

September 2018

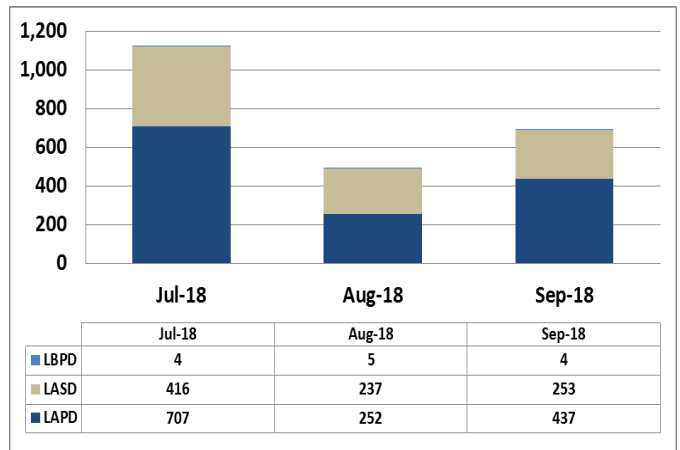
Ratio of Staffing Levels vs Vacant Assignments



Ratio of Proactive vs Dispatched Activity



Grade Crossing Operations



Grade Crossing Operation Locations September:

1. Blue Line Stations (129)
2. Expo Line Stations (258)
3. Gold Line Stations (307)