



Measure R Multimodal Highway Subregional Programs Update

Staff Recommendation

CONSIDER:

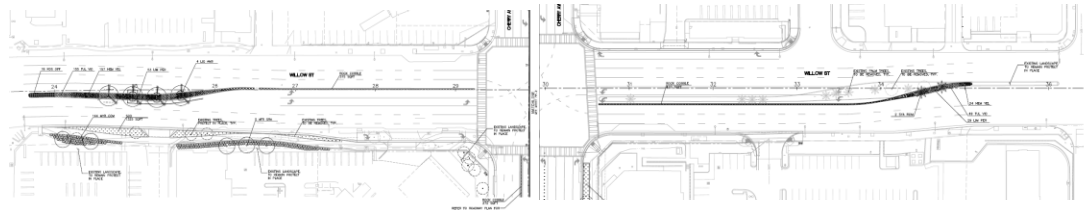
- A. APPROVING \$12,519,439 in additional programming within the capacity of Measure R Multimodal Highway Subregional Programs and funding changes via the updated project list shown in Attachment A. Projects within this Measure R Multimodal Highway Subregional Program are inclusive of traffic signal, pedestrian, bicycle, transit, and roadway improvements;
- B. APPROVING the deobligation of \$4,140,439 in previously approved Measure R Multimodal Highway Subregional Program funds to re-allocate said funds to other existing Board-approved Measure R Projects as shown in Attachment A; and
- C. AUTHORIZING the Chief Executive Officer (CEO) or her designee to negotiate and execute all necessary agreements for Board-approved Projects.

Measure R Multimodal Highway Subregional Status

Subregion	# Projects	MR Allocation	Programmed to Date (As of Mar 2025)	Amount Billed	% Spent
(\$in millions)					
Arroyo Verdugo Operational Improvements Expenditure Line 31	61	\$170.0	\$140.8	\$63.5	45%
La Virgenes/Malibu Operational Improvements Expenditure Line 32	31	\$175.0	\$173.7	\$135.0	78%
South Bay I-405, I-105, & SR-91 Ramp / Interchange Imps Expenditure Line 33	84	\$506.0	\$455.6	\$173.1	38%
Gateway Cities: I-605/SR-91/I-405 Corridors "Hot Spots" Expenditure Line 35	78	\$590.0	\$422.6	\$243.2	58%
Gateway Cities: Interstate 710 South Early Action Projects Expenditure Line 37	75	\$590.0	\$359.3	\$106.4	30%
North County: SR-138 Safety Enhancements Expenditure Line 38	12	\$200.0	\$200.0	\$69.5	35%
North County: I-5/SR-14 Safety Enhancements Expenditure Line 26	9	\$90.8	\$85.8	\$13.4	16%
TOTAL	350	\$2,321.8	\$1,837.8	\$804.1	44%

Examples of Measure R Multimodal Highway Projects

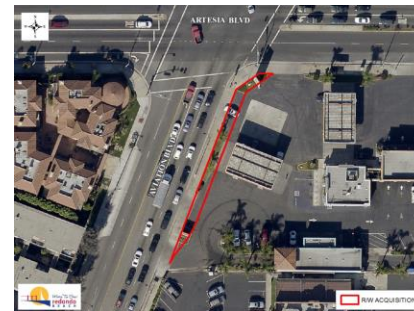
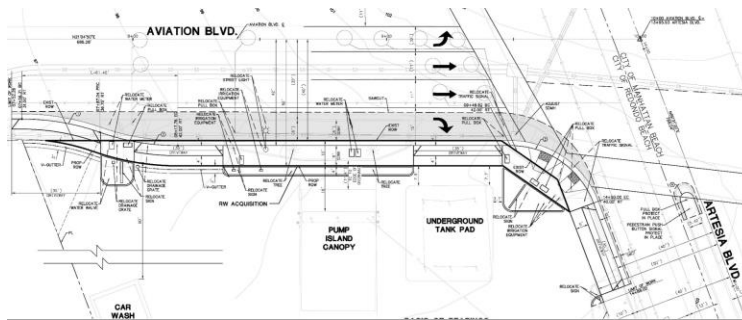
This update includes new projects and funding adjustments to 20 projects. Approximately 11 projects are expected to be completed by the 2028 Games.



Gateway Cities Subregion I-710 South Early Action Projects

MR306.62 - Willow St Corridor - Walnut Ave to Cherry Ave Congestion Relief Project

The project is in the right-of-way phase and will improve mobility, traffic signals, and safety.



South Bay Cities Subregion I-405, I-110, I-105 & SR-91 Improvements

MR312.20 - Aviation Boulevard at Artesia Boulevard Intersection Improvements

The project is in the construction phase and will modify the intersection to accommodate a dedicated right turn lane on northbound Aviation Boulevard to eastbound Artesia Boulevard.

Equity Focus Communities/Next Steps

Equity Focus Communities

This update includes board actions that advance the local priority projects for the EFCs within the cities of Bell Gardens, Burbank, Carson, Gardena, Hawthorne, Whittier as well as unincorporated areas of Los Angeles County.

Next Steps

Staff will continue working with the subregions to execute necessary agreements and work with the various subregions and local jurisdictions for their consideration of multimodal, safe, equitable, and sustainable investment within the Measure R Multimodal Highway Subregional Programs.

