



NEXTGEN Bus Plan

Bus Lane Enforcement Pilot Program



Metro®

OCTOBER 2023

Recommendation

- A. APPROVE implementation of a Bus Lane Enforcement Pilot Program on NextGen Tier One Network in partnership with City of Los Angeles
- B. APPROVE the Life of Project (LOP) capital budget of \$11,000,000 for the Bus Lane Improvement Pilot Project
- C. AUTHORIZE the Chief Executive Officer (CEO) to award a 63-month firm fixed unit price Contract No. OP48185000 to Hayden AI Technologies, Inc. for the purchase of equipment and implementation of a Bus Lane Enforcement System on NextGen Tier One Network in the City Of Los Angeles in an amount not-to-exceed \$7,079,570 for the 39-month base term, and \$1,710,000 for the first one-year option and \$1,710,000 for the second one-year option, for a total not-to-exceed Contract Value of \$10,499,570, effective December 1, 2023, subject to resolution of properly submitted protest(s), if any; and
- D. AUTHORIZE the CEO to execute a Memorandum of Understanding (MOU) with the City of Los Angeles on a project partnership of the Bus Lane Enforcement System Pilot Program

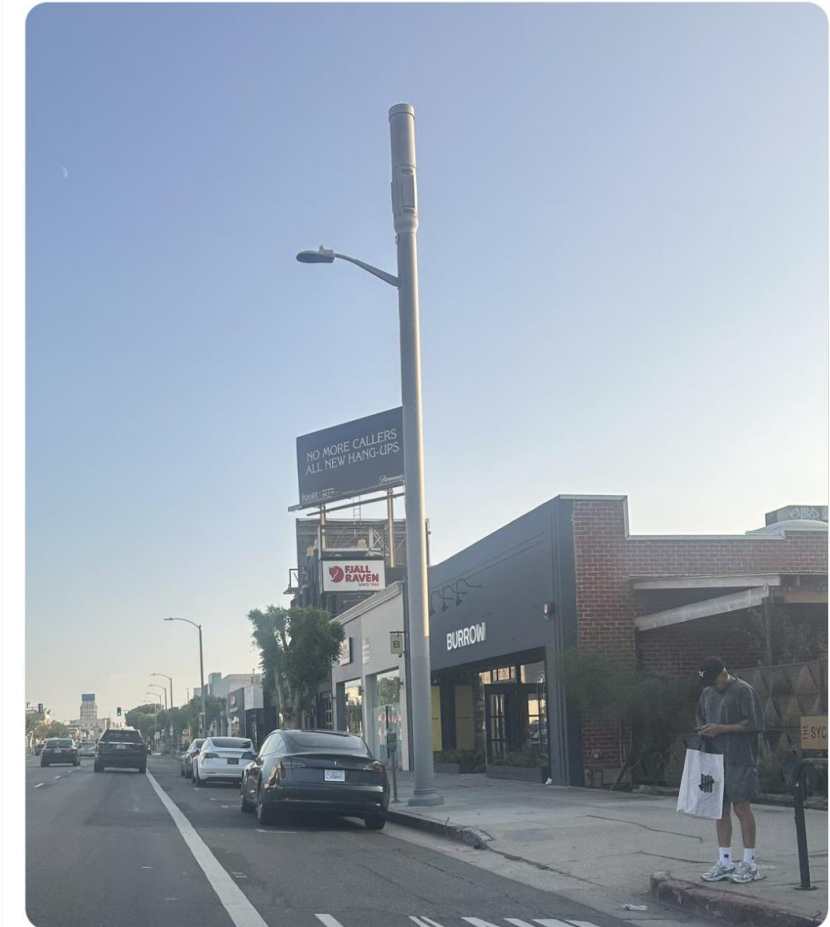
Background

- As the NextGen Speed & Reliability Program has installed 40+ miles of Bus Priority Lanes, there have been growing issues with violators blocking buses from using these lanes
- Riders have articulated frustration from Metro Rapid Line 720 passenger focus group that the bus lanes fall short of expectations to improve transit service
- Previous work found 800+ violations in the Wilshire bus lanes in a single month
- Survey of over 200 bus riders indicated private vehicles blocking Alvarado St Bus Lanes at least half of the time
- Bus lane violators decrease bus lane effectiveness and safety by requiring additional lane weaving in/out of traffic
- Clear bus lanes deliver faster and more reliable bus service, which can be reinvested to more frequent service



BikeLanesLA
@BikeLanesLA

I saw dozens of cars parked on the new La Brea Bus Lanes at 6:00 pm. Will check again today.



11:40 AM · Sep 22, 2023 from Los Angeles, CA · 195 Views



1



1



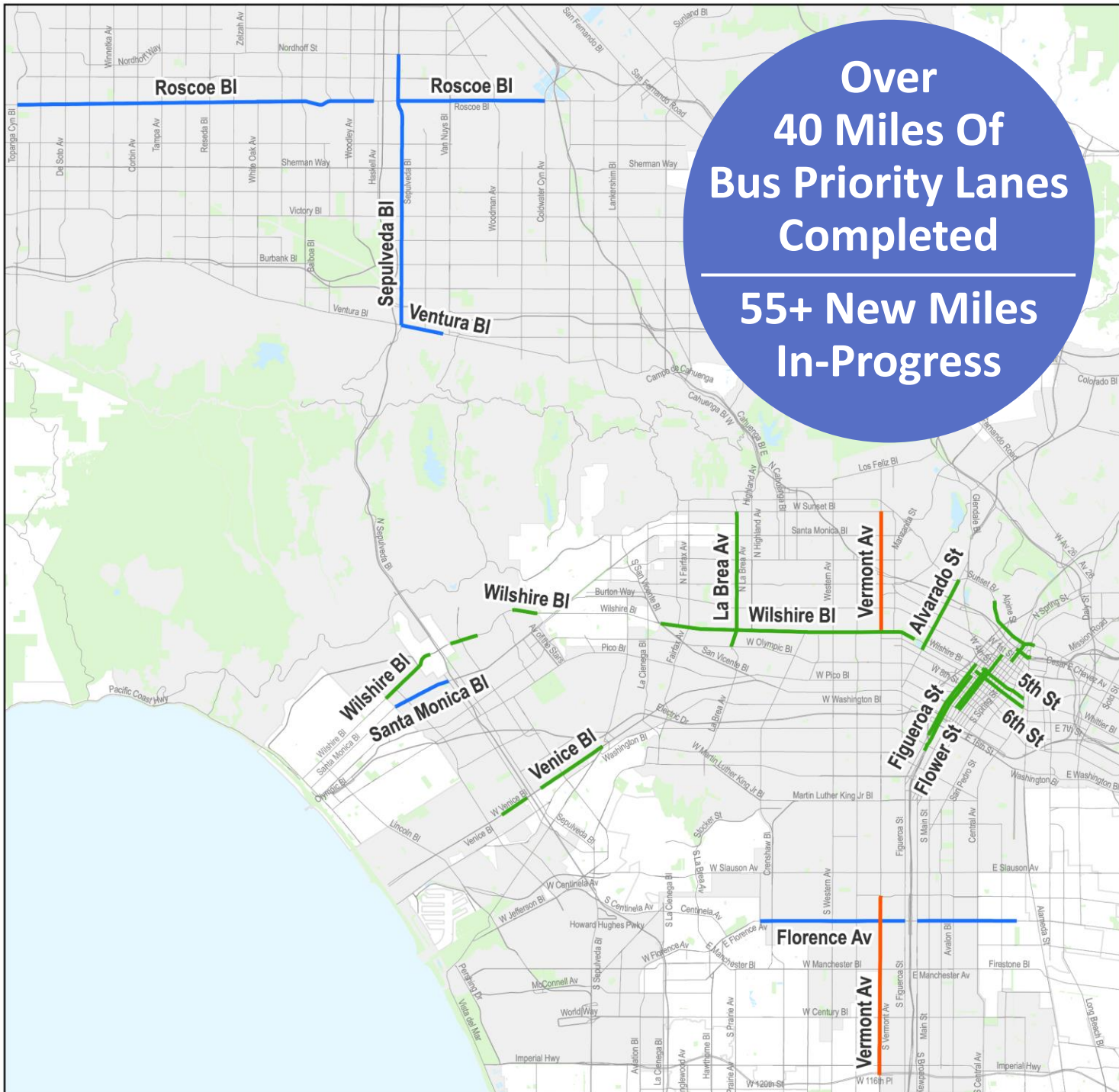
7



Bus Lane Map

Bus Priority Lane Corridors

- ✓ Wilshire Bl
- ✓ Flower St
- ✓ Aliso St
- ✓ 5th St
- ✓ 6th St
- ✓ Alvarado St
- ✓ Grand Av
- ✓ Olive St
- ✓ Venice Bl
- ✓ La Brea Av
-  Sepulveda Bl
-  Florence Av
-  Santa Monica Bl
-  Vermont Av



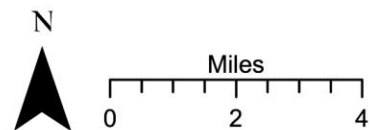
Over
40 Miles Of
Bus Priority Lanes
Completed

55+ New Miles
In-Progress

Bus Lane Projects DRAFT, 9/21/2023

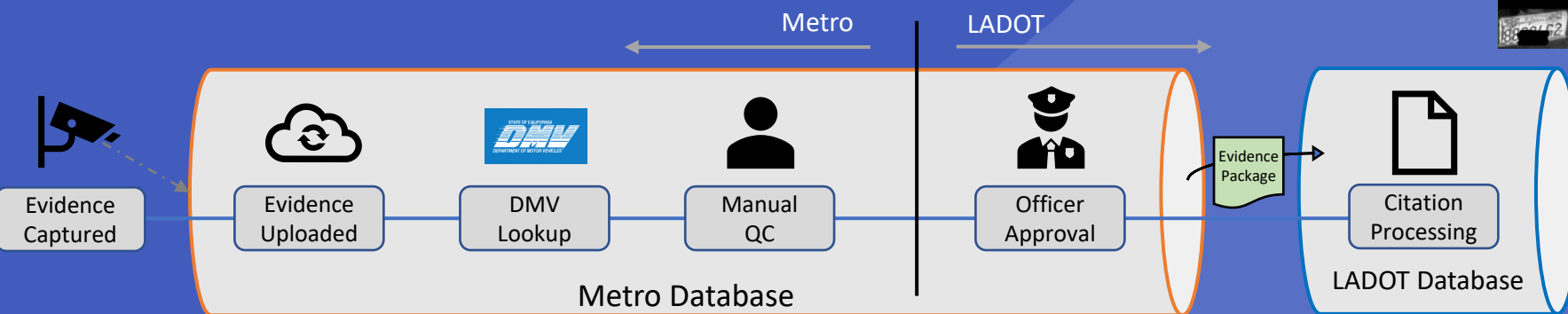
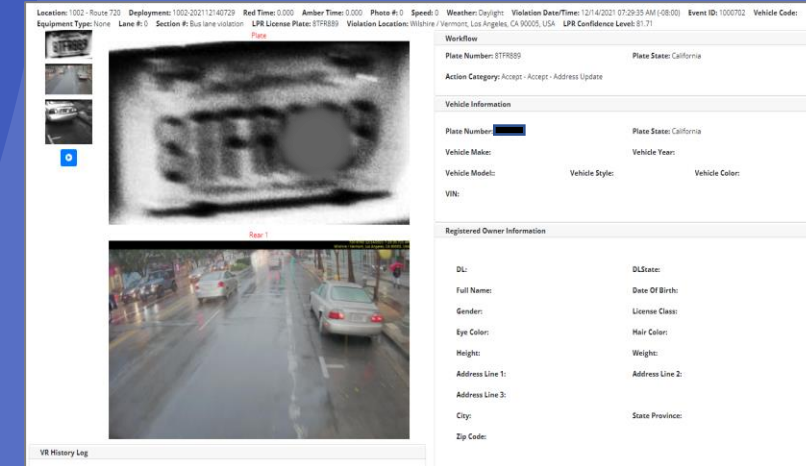
Bus Lane Corridors

-  Completed
-  Under Design/Construction
-  In-Progress
-  City of Los Angeles
-  Other Cities/County



Camera Bus Lane Enforcement Pilot

- With AB 917 (Bloom) adoption, and in partnership with the City of Los Angeles, Metro to implement automated license plate reader (ALPR) enabled cameras to obtain evidence of parking violations through December 31, 2026
- ALPR in other cities has made bus speeds +30% faster and ridership growth +20%, including SF, NYC, Washington DC
- Metro to submit evidence packages to local jurisdiction (LADOT), which would review and process citations
- Issued Request for Proposals (RFP) for 100 camera units; seeking recommendation for contract award this month



Next Steps

- Upon Board approval, staff will execute the contract effective December 1, 2023, for program rollout in Spring 2024
- Community Relations will coordinate education-first outreach with key stakeholders along selected bus lane corridors, beginning 60-days and will advance with increasing visibility towards implementation
 - Webpage, multilingual e-blasts, targeted social media campaigns, The Source/El Pasajero posts
 - Focus on Equity Focused Communities (EFCs) as well as adjacent, low-income residential areas
- Performance measurement matrix will be developed for monitoring the pilot program effectiveness; report to be prepared for California Legislature by January 1, 2025, as required by CVC §40240.5
- Metro & LADOT to finalize MOU on this pilot program
- At the conclusion of the pilot, staff will assess overall performance and provide recommendation to the Board for a path forward

