

---

# Program Management -- Transit Status Report

## Significant Issues

Presented By

**Bryan Pennington**

Deputy Executive Director,  
Program Management

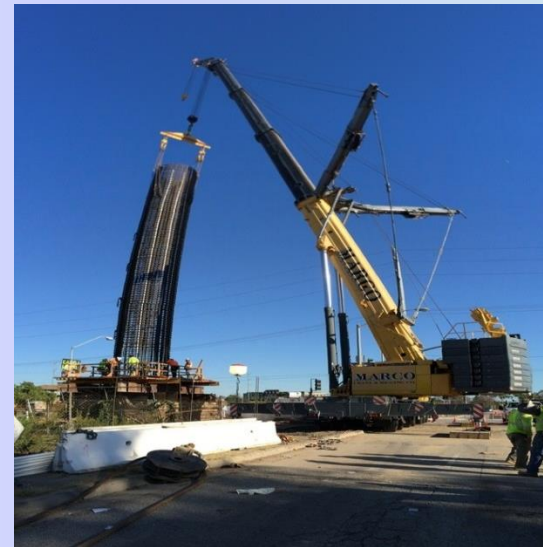
# CRENSHAW/LAX TRANSIT PROJECT

## SIGNIFICANT HIGHLIGHTS

- Overall completion 36% complete. Design-builder's design is 95% complete. Design-builder is behind schedule but discussion underway with design-builder regarding expediting work efforts
- Expo Station – Tier three struts installed and total station box excavation nearing completion
- I-405 Bridge – Three of four concrete foundations under construction
- Aviation/Century Station – Falsework largely complete with rebar placement ongoing



**LEIMERT PARK STATION** – Excavation and lagging



**I-405 BRIDGE** –  
Bent 2 cast-in-  
drilled-hole column  
cage placement

# REGIONAL CONNECTOR TRANSIT CORRIDOR

## SIGNIFICANT HIGHLIGHTS

### Design Build Contract (DB)

- Overall DB contract is 22% complete and Final Design is 78% complete
- Metro/RCC are working with LADWP on Advance Utility Relocation and construction opportunities to mitigate overall schedule impact
- Advance Utility Relocation work continued at 1<sup>st</sup>/Alameda, Flower and 2<sup>nd</sup>/Broadway
- Major street closures are being coordinated with LABOE, LADOT and CD14
- 2<sup>nd</sup>/Broadway intersection partial closure started in mid-September 2015
- Supplemental Environmental Impact Statement was issued on June 12, 2015, public comments resolved and are incorporated in the finalized report in September 2015
- Life of Project Budget contingency is being reviewed by Executive Management and preparing for November/December 2015 Board Report



2<sup>nd</sup>/Broadway intersection Partial Closure

# WESTSIDE PURPLE LINE – SECTION 1

## SIGNIFICANT HIGHLIGHTS

Overall Section 1 Advanced Utility Relocations work is 60% complete.

- The Wilshire/Fairfax Advanced Utility Relocations Contractor is on schedule to complete in October 2015.
- The Wilshire/La Cienega Advanced Utility Relocations Contractor continues with the Southern California Edison (SCE) power relocation work and the City of Beverly Hills sanitary sewer, water and storm drain relocations.



**Soundwall Construction at North Wilshire/La Brea**

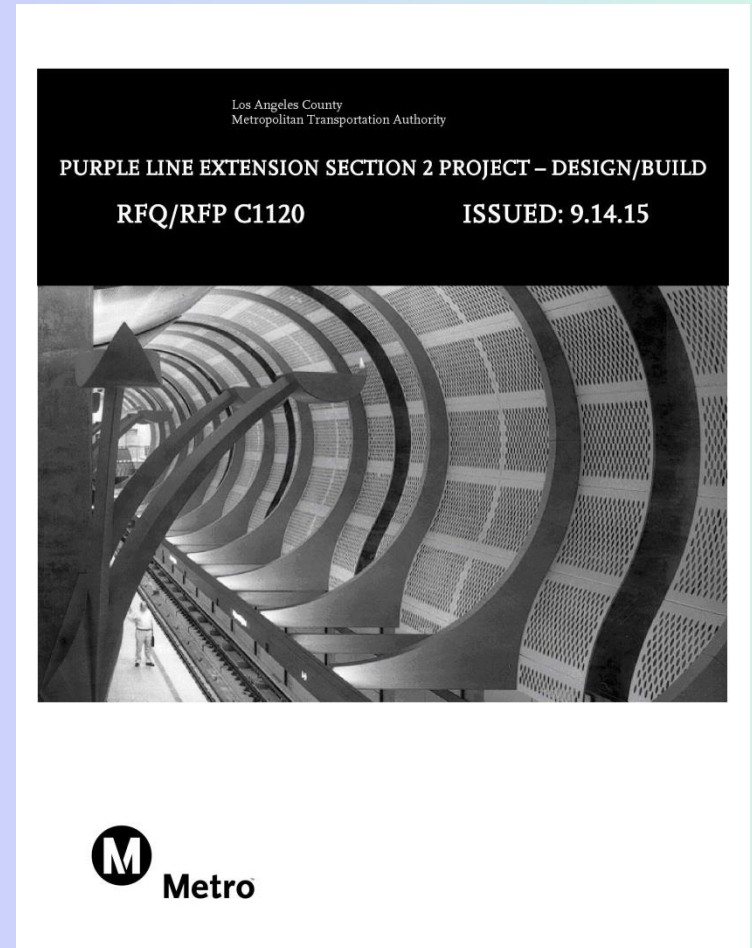
Tunnels, Stations, Trackwork and Systems Design-Build Contract is 4% complete.

- Following the Notice to Proceed in January 2015, the Design/Builder for Tunnels, Stations, Trackwork, Systems and Systems Integration Testing has submitted 60% to 85% final design submittals for the underground stations and tunnels. The North Wilshire/La Brea construction staging area is nearing completion in preparation for the Tunnel Boring Machines launch site.

# WESTSIDE PURPLE LINE – SECTION 2

## SIGNIFICANT HIGHLIGHTS

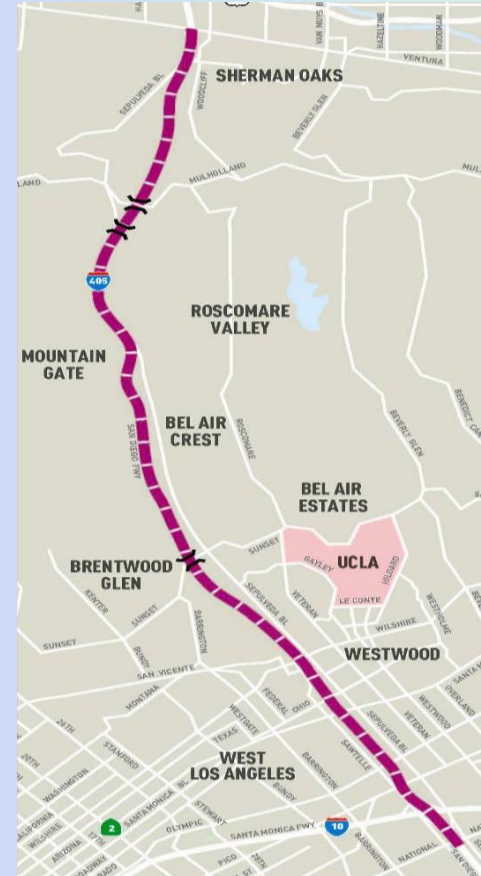
- Contract C1120 – Design/Build Request for Qualifications/Request for Proposal was released on September 14, 2015.
- Qualifications are due on October 23, 2015.
- Price Proposals are due on May 16, 2016
- The City of Beverly Hills approved the geotechnical investigation and utility potholing work permits at their City Council meeting on August 18, 2015. – Fieldwork is ongoing and scheduled to be completed in November 2015.



# I-405 SEPULVEDA PASS IMPROVEMENTS PROJECT

## SIGNIFICANT HIGHLIGHTS

- Punch list items 99% complete
- Substantial completion was granted on September 18, 2015, and remaining Errors and Omissions items and deficiencies missed by Kiewit will be addressed during the Punch list period
- Board approved increase in LOP budget at September 2015 Board meeting, not inclusive of Non Claim 86 or Claim 86 issues



# DIVISION 13 BUS O&M FACILITY

## SIGNIFICANT HIGHLIGHTS

- Project 97% complete. Project completion delayed two months due to issues with lower level ventilation system. Mitigation is complete. Substantial completion now scheduled for November 2, 2015
- Primary work at present includes commissioning, CNG testing, startup activities, punch list, final landscape, and furnishing



October 2015

Construction Committee

Los Angeles County Metropolitan Transportation Authority



# PATSAOURAS PLAZA BUSWAY STATION

## SIGNIFICANT HIGHLIGHTS

- Project approximately 5% complete, construction start has slipped to January 2016
- Pending issues include timely approval of 100% design package with Caltrans, Caltrans permits and ROW certifications to start construction and resolution of change order for Red Line tunnel foundation conflicts
- LOP increase required to address the above cost issues is planned for Board consideration in November 2015
- Project completion scheduled for Spring/Summer 2017



October 2015

**Construction Committee**  
Los Angeles County Metropolitan Transportation Authority



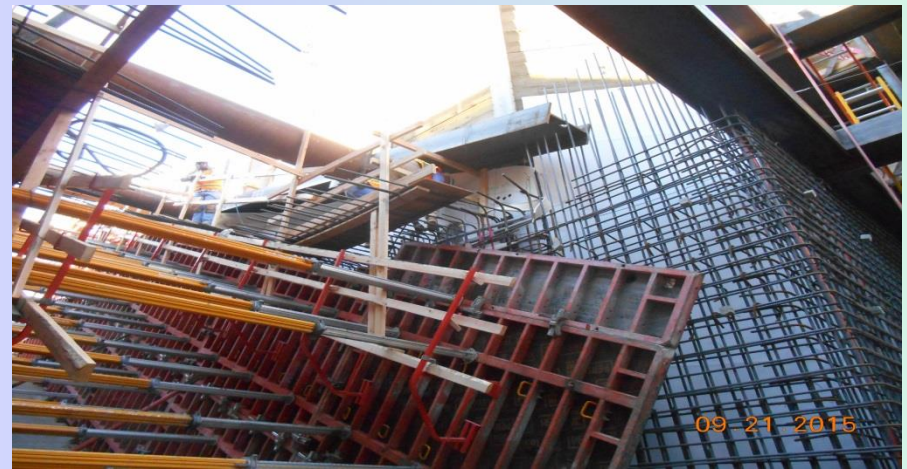


# CIP PROJECTS

## MRL-MOL N. Hollywood Station West Entrance:

### Progress:

- Construction is 44% complete and scheduled for completion by May 2016
- Knockout Panel (KOP) removed
- Base Foundation Poured
- Side wall Construction ongoing
- Escalators delivered at site
- Walls/ Bulkheads/Water-stops in progress
- CMC Rebar installation ongoing



October 2015

Construction Committee  
Los Angeles County Metropolitan Transportation Authority



# CIP PROJECTS

## Universal Pedestrian Bridge:

### Progress:

- Construction 46% complete. First phase completion targeted by early February 2016 to meet Universal's requirements. Second phase completion targeted by April 2016
- Transformer Foundation and conduit installation ongoing
- Structural Steel for elevator shaft at Station #1, Station # 2, and Station # 3 ongoing
- Bridge structural steel under fabrication
- Escalator and Elevator are currently being manufactured
- Cost Risk: Potential shortfall in CMA and possibly in LOP Budget



October 2015

Construction Committee

Los Angeles County Metropolitan Transportation Authority



# CIP PROJECTS

## MBL Stations Refurbishment:

- Punch List items resolved
- Project in final closeout phase



October 2015

**Construction Committee**  
Los Angeles County Metropolitan Transportation Authority

