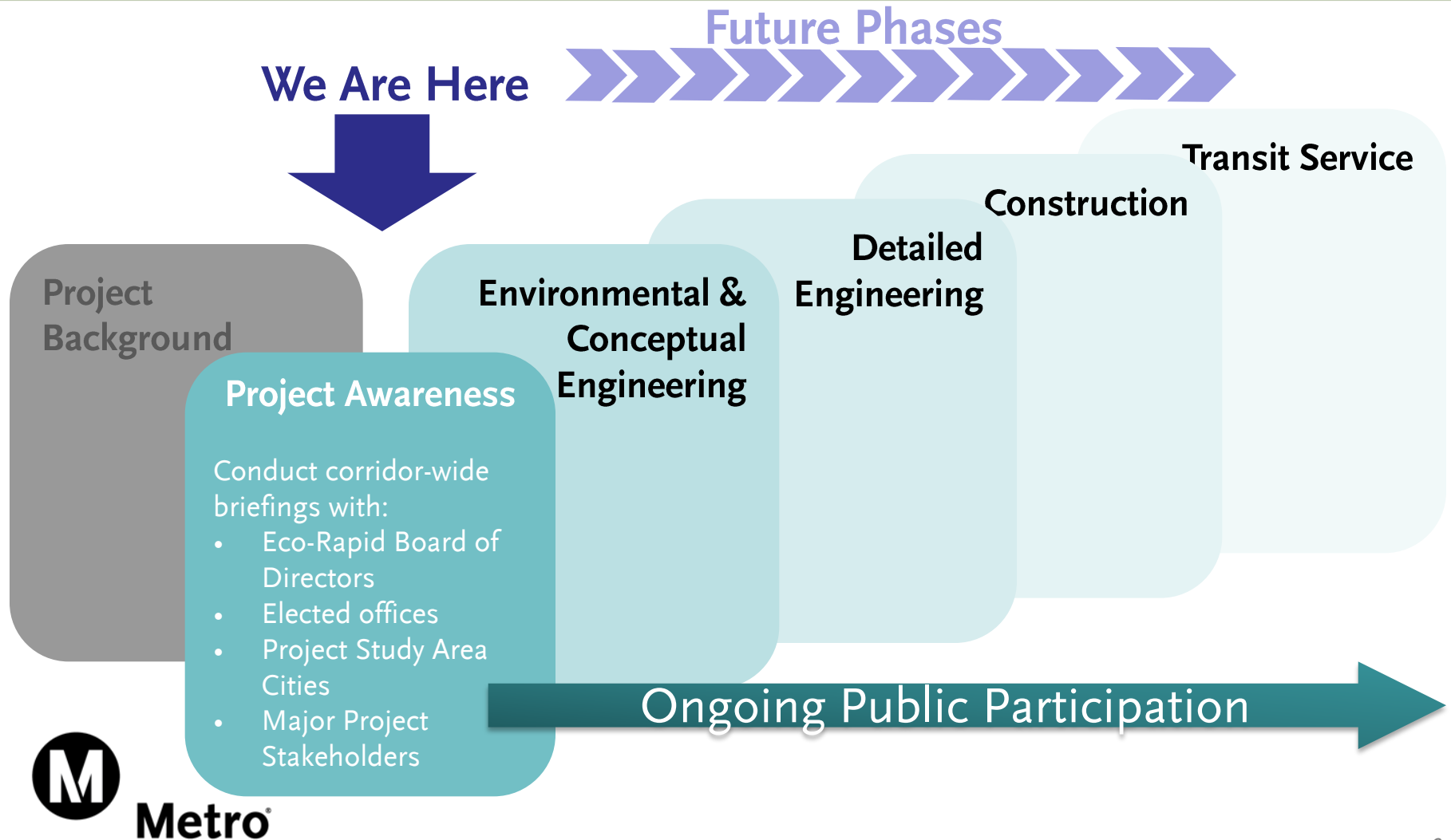


West Santa Ana Branch Transit Corridor

Planning and Programming Committee – April 19, 2017



Project Development Process



SCAG Alternatives Analysis Recommendations



- Light Rail Transit (LRT)
- Stations identified
- Two northern alternatives:
 - East Bank
 - West Bank 3

Technical Refinement Study (TRS) Overview



1. Southern Terminus
 - City of Artesia Pioneer Station as new terminus
2. New Green Line Station
 - Constructing station in active freeway and rail line
3. Huntington Park Alignment & Stations
 - Shift alignment from Pacific Blvd. to Santa Fe Ave.
 - Relocate SCAG AA station locations to:
 - Salt Lake Ave./Florence Ave.
 - Randolph St. east of Pacific Blvd.
4. Northern Alignment Options
5. Access to Union Station

TRS - Northern Alignment Options



- SCAG Alignments:
 - East Bank
 - West Bank 3
- Pacific Blvd. Corridor Options:
 - Pacific/Alameda
 - Pacific/Vignes
- Metro Blue Line/Alameda St. Corridor Options:
 - Alameda
 - Alameda/Vignes

TRS - Northern Alignment Options Key Findings

	East Bank	West Bank 3	Pacific Blvd Corridor		Metro Blue Line/ Alameda St Corridor	
			Pacific/ Alameda	Pacific/ Vignes	Alameda	Alameda/ Vignes
Number of Stations	11	12	13	12	15	15
Length (miles)	18.5	17.8	18.3	18.1	19	19.1
Travel Time (minutes)	34.4	32.4	33	33.2	33.2	34.3
Estimated Daily Boardings (2040)	50,760	43,390*	59,660	52,550	75,300	61,770
Preliminary Cost Estimate (in billions, 2015\$)	\$3.8	\$4.3	\$4.3	\$4.3	\$4.3	\$4.6

* Forced Transfers

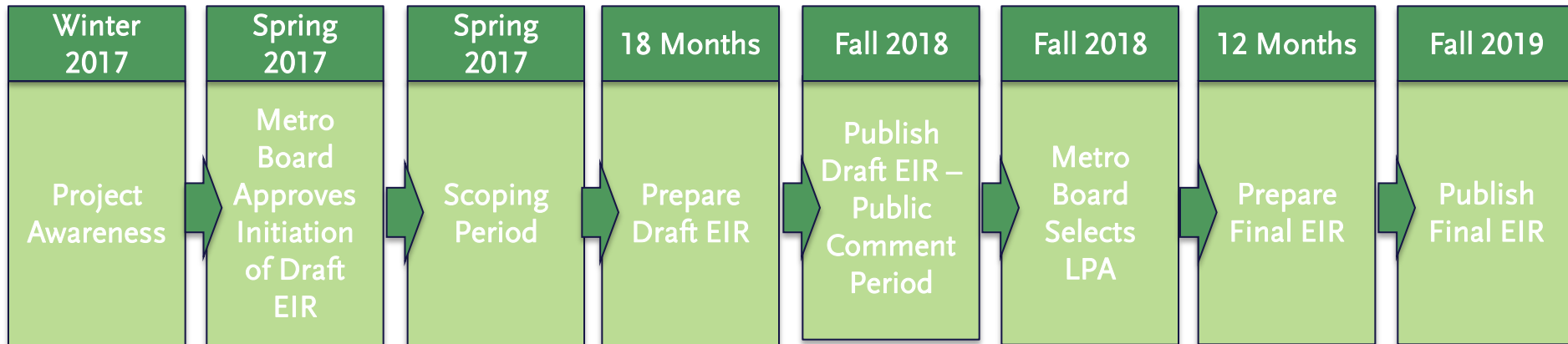
Higher Performing Alternatives

Project Definition - Four Northern Alignment Options



- Recommend to be carried into Environmental Scoping:
 - Pacific Blvd. Corridor Options:
 - Pacific/Alameda
 - Pacific/Vignes
 - Metro Blue Line/Alameda St. Corridor Options:
 - Alameda
 - Alameda/Vignes

Environmental Process Timeline



Public Outreach

- **Public Scoping Comment Period & Meetings (with Live Webcast) - Spring 2017**
- Project Update Community Meetings (2 Rounds)
- City and Elected Briefings
- TAC Meetings
- Community Events / Pop-ups
- Extended Outreach
- **Draft EIR/Public Comment Period & Hearings (with Live Webcast)**

Next Steps

- May/June 2017, Public Scoping Comment Period & Meetings (with Live Webcast)
- Technical meetings with corridor cities/agencies
- Continuing public outreach

