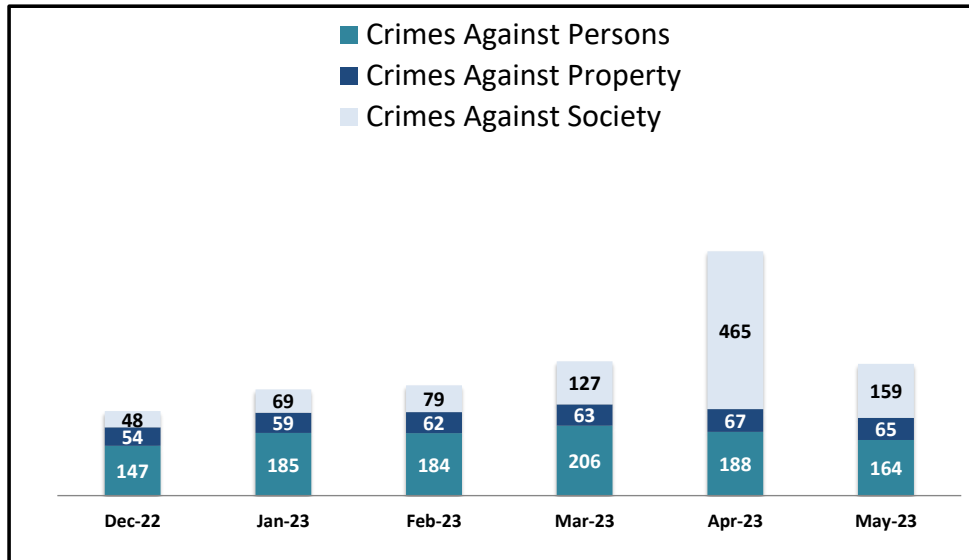


SYSTEM-WIDE LAW ENFORCEMENT OVERVIEW

MAY 2023

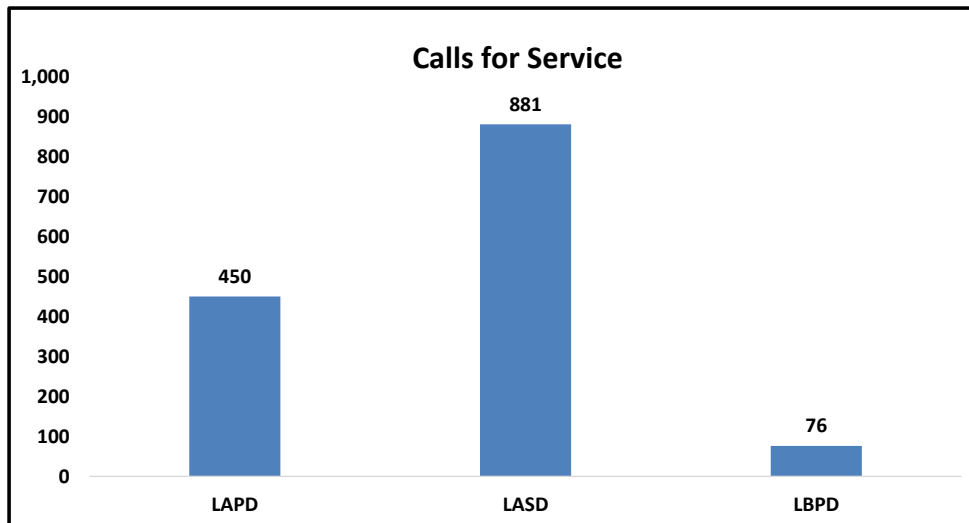
Attachment B

Total Crimes


Crimes Against Persons: violent crimes (i.e., homicide, aggravated assaults) are those in which the victims are always individuals

Crimes Against Property: crimes to obtain money, property, or some other benefit (i.e., theft, vandalism, robbery)

Crimes Against Society: represent society's prohibition against engaging in certain types of activity (i.e., drug violations)



SYSTEM-WIDE LAW ENFORCEMENT OVERVIEW

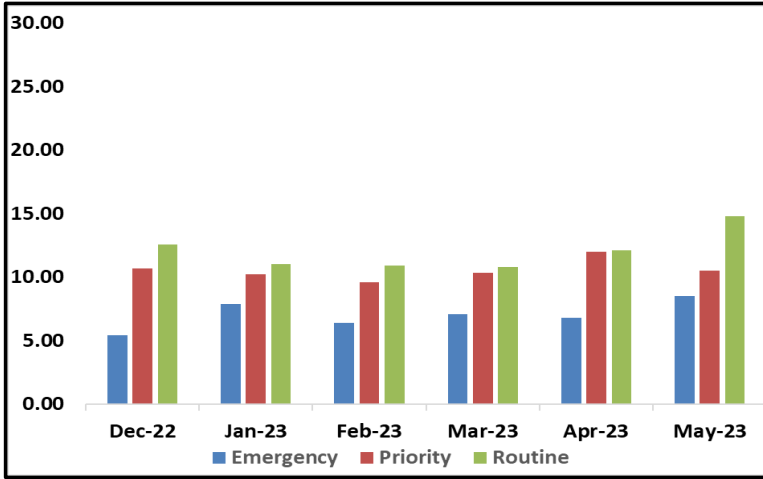
MAY 2023

Attachment B

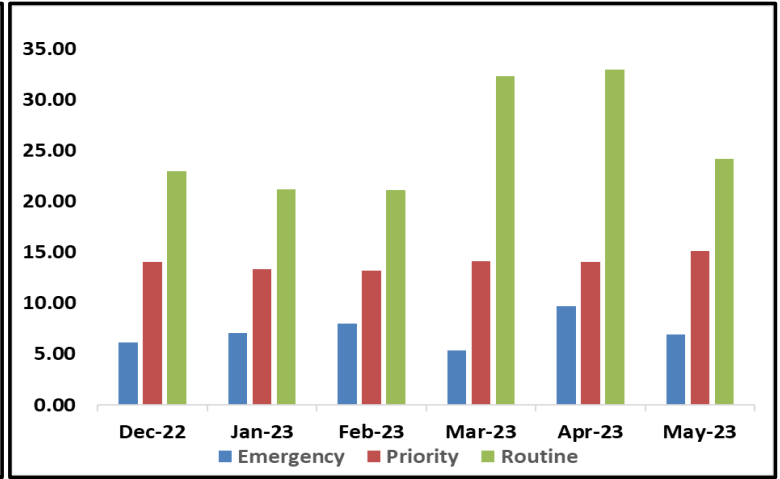
Average Incident Response Times

These graphs show how long it takes (in minutes) for LAPD, LASD, and LBPD to respond to Emergency, Priority, and Routine calls

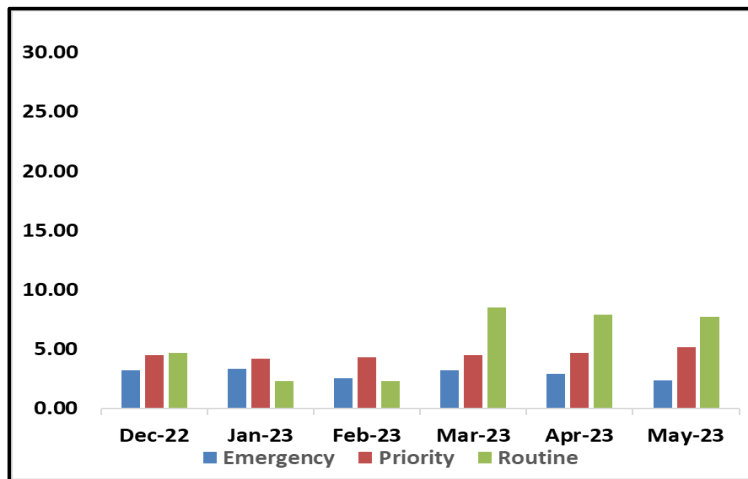
LAPD



LASD



LBPD



*The Drug Free Campaign and the B/D Supplemental Deployment resulted in increased response times to Routine calls in March and April for all Law Enforcement Agencies.

*Impacts to Emergency and Priority calls were nominal except for LAPD, since they were the most impacted by the increased resource deployments for both efforts.

Transit Police

Monthly Crime Report


Attachment B

	2023	2022	%
	May	May	Change
CRIMES AGAINST PERSONS			
Homicide	0	0	0.0%
Rape	9	2	350.0%
Robbery	36	30	20.0%
Aggravated Assault	20	33	-39.4%
Aggravated Assault on Operator	3	3	0.0%
Battery	81	70	15.7%
Battery on Operator	5	6	-16.7%
Sex Offenses	10	14	-28.6%
SUB-TOTAL	164	158	3.8%
CRIMES AGAINST PROPERTY			
Burglary	0	0	0.0%
Larceny	43	42	2.4%
Bike Theft	2	3	-33.3%
Motor Vehicle Theft	2	1	100.0%
Arson	0	0	0.0%
Vandalism	18	27	-33.3%
SUB-TOTAL	65	73	-11.0%
CRIMES AGAINST SOCIETY			
Weapons	10	3	233.3%
Narcotics	26	9	188.9%
Trespassing	123	7	1657.1%
SUB-TOTAL	159	19	736.8%
TOTAL	388	250	55.2%
ENFORCEMENT EFFORTS			
Arrests	267	123	117.1%
Citations	348	776	-55.2%
Calls for Service	1,407	1,487	-5.4%



SYSTEM SECURITY & LAW ENFORCEMENT

MONTHLY, BI-ANNUAL, ANNUAL COMPARISON

MAY 2023

Attachment B

Crimes

Monthly

System-Wide	May-23	May-22	% Change
Crimes Against Persons	164	158	3.80%
Crimes Against Property	65	73	-10.96%
Crimes Against Society	159	19	736.84%
Total	388	250	55.20%

Six Months

System-Wide	Dec-22-May-23	Dec-21-May-22	% Change
Crimes Against Persons	1,074	1,003	7.08%
Crimes Against Property	370	482	-23.24%
Crimes Against Society	947	109	768.81%
Total	2,391	1,594	50.00%

Annual

System-Wide	Jun-22-May-23	Jun-21-May-22	% Change
Crimes Against Persons	2,029	1,885	7.64%
Crimes Against Property	763	905	-15.69%
Crimes Against Society	1,142	239	377.82%
Total	3,934	3,029	29.88%

Average Emergency Response Times

Monthly

May-23	May-22	% Change
5:55	5:53	0.57%

Six Months

Dec-22-May-23	Dec-21-May-22	% Change
5:42	5:07	11.40%

Annual

Jun-22-May-23	Jun-21-May-22	% Change
5:40	4:58	14.09%

Bus Operator Assaults

Monthly

May-23	May-22	% Change
8	9	-11.11%

Six Months

Dec-22-May-23	Dec-21-May-22	% Change
75	82	-8.54%

Annual

Jun-22-May-23	Jun-21-May-22	% Change
159	149	6.71%

Ridership

Monthly

May-23	May-22	% Change
24,941,553	21,548,571	15.75%

Six Months

Dec-22-May-23	Dec-21-May-22	% Change
135,049,573	123,497,016	9.35%

Annual

Jun-22-May-23	Jun-21-May-22	% Change
266,690,647	251,397,216	6.08%



SYSTEM SECURITY & LAW ENFORCEMENT

MONTHLY, BI-ANNUAL, ANNUAL COMPARISON

MAY 2023

Attachment B

