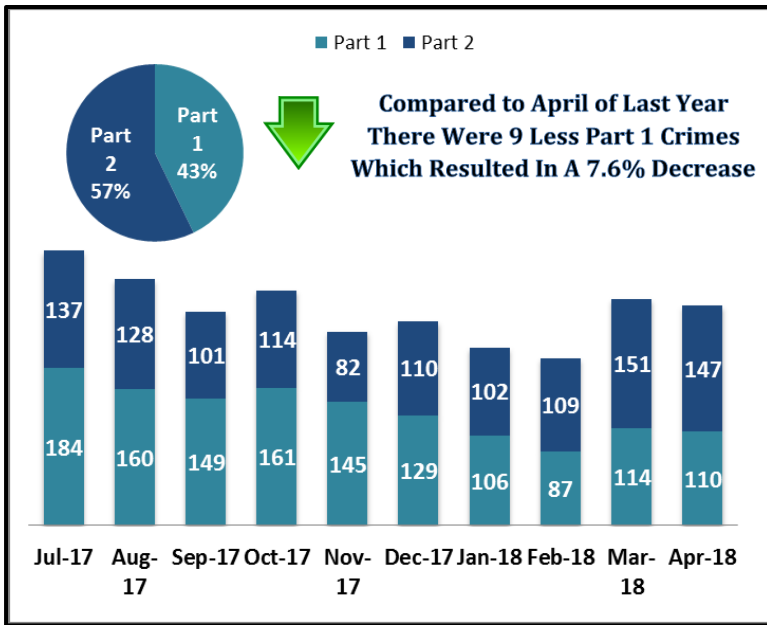


SYSTEM-WIDE LAW ENFORCEMENT OVERVIEW

APRIL 2018

Attachment A

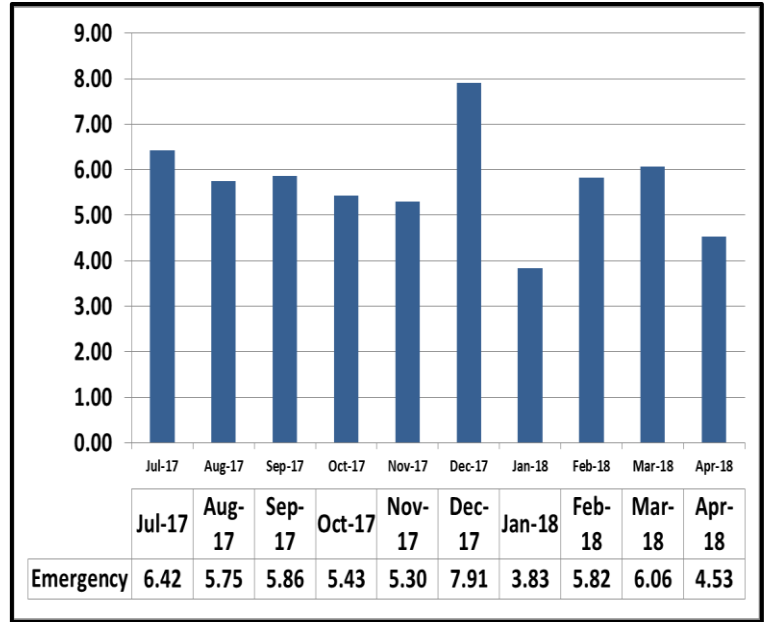
Part 1 & Part 2 Crimes



For the month of April 2018, Part 1 crime activity is down by 7.6% system-wide compared to the same period last year. In a monthly contrast, there were 4 less Part 1 crimes in April than in March, resulting in a 3.5% decrease.

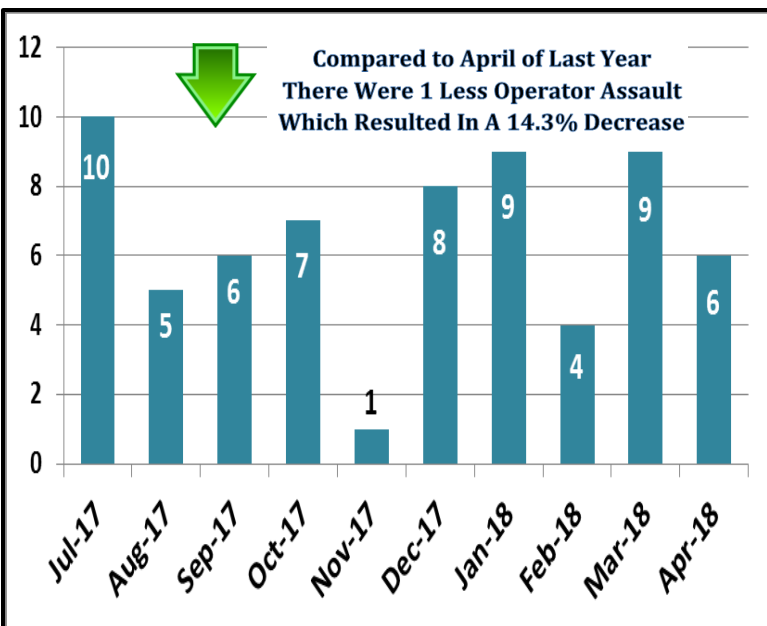
Part 2 crime activity increased by 14.8% system-wide compared to the same period last year. In a monthly contrast, there were 4 less Part 2 crimes in April than in March.

Average Emergency Response Times



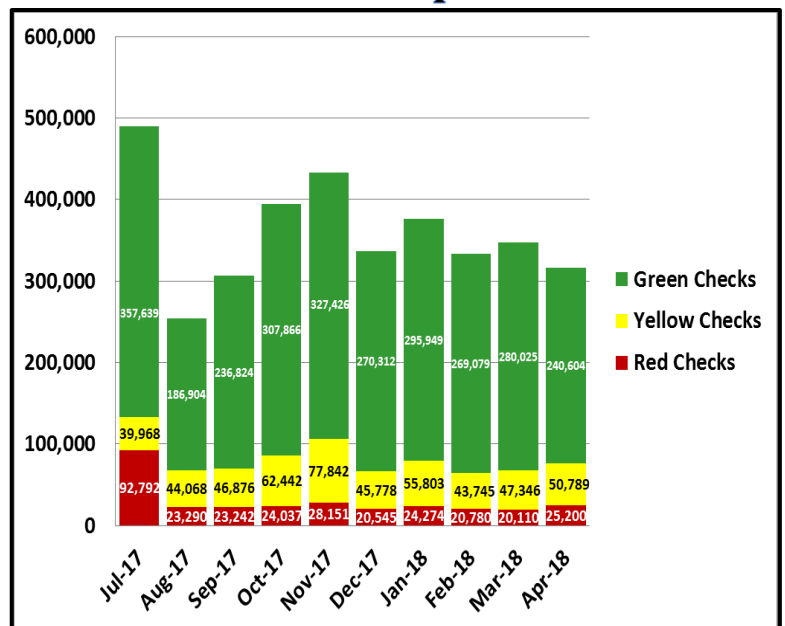
Average emergency response times were 4.53 mins.

Bus Operator Assaults



There were a total of 6 Bus Operator Assaults. Comparing the Bus Operator Assaults from the same period last year, there were 7 Operator Assaults last year resulting in a 14.3% decrease.

Fare Compliance



Green Checks- Occurs when a patron has valid fare

Yellow Checks- Occurs when a patron has valid fare, but did not tap at transfer station

Red Checks- Occurs when a patron has invalid fare