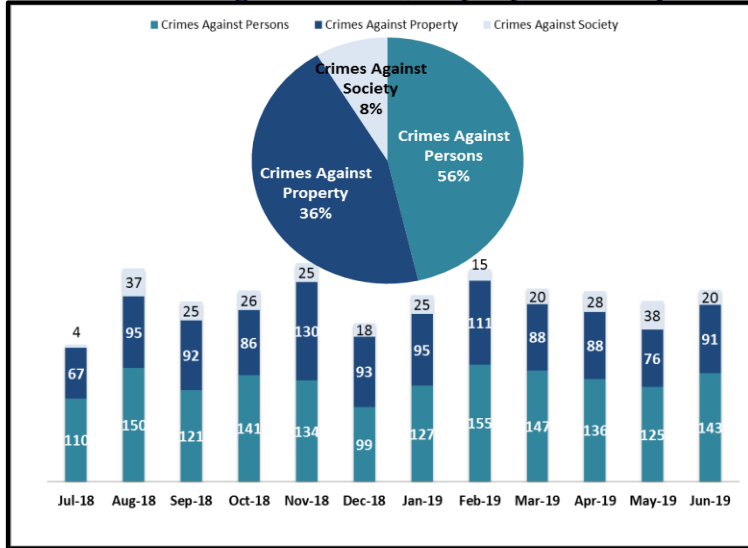


KEY PERFORMANCE INDICATORS

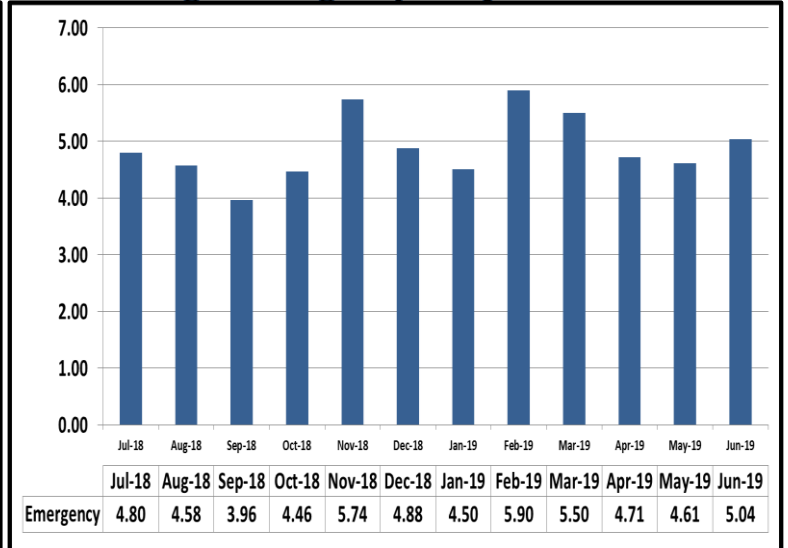
JUNE 2019

Attachment C

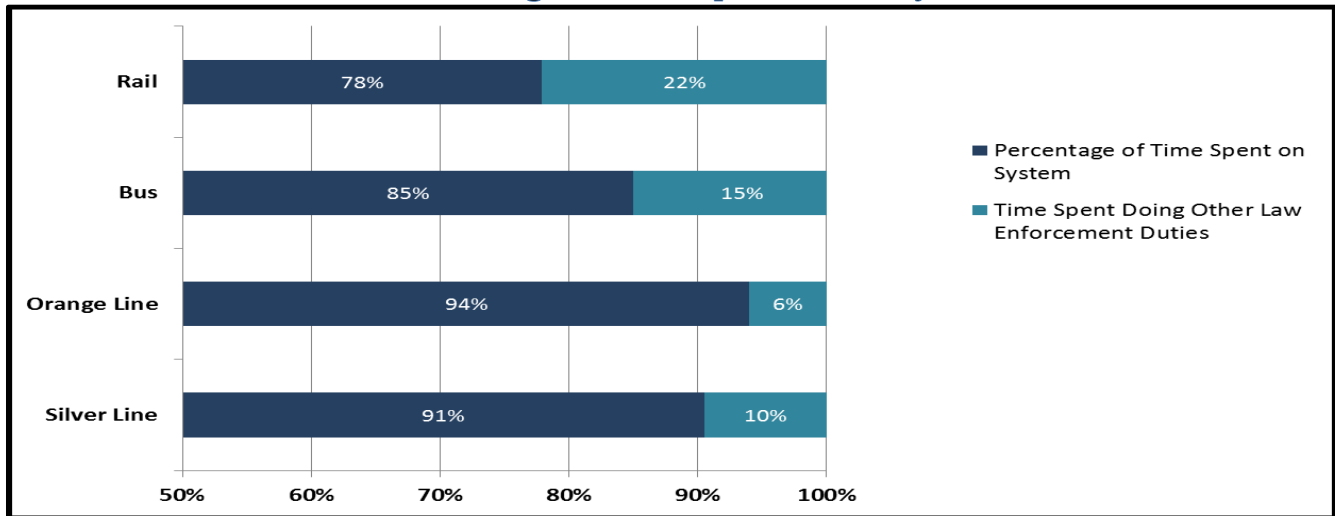
Crimes Against Persons, Property, and Society



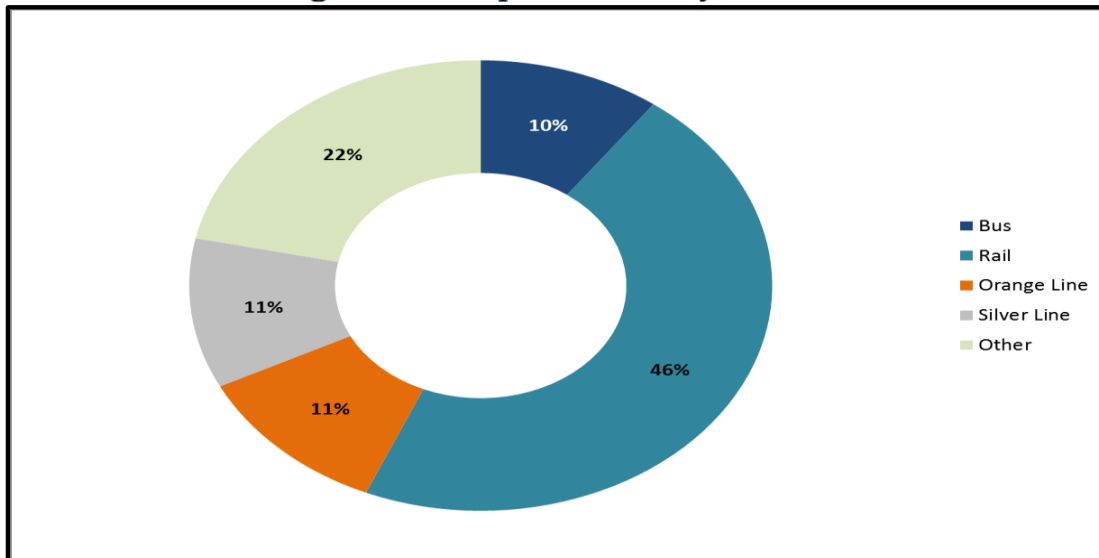
Average Emergency Response Times



Percentage of Time Spent on the System



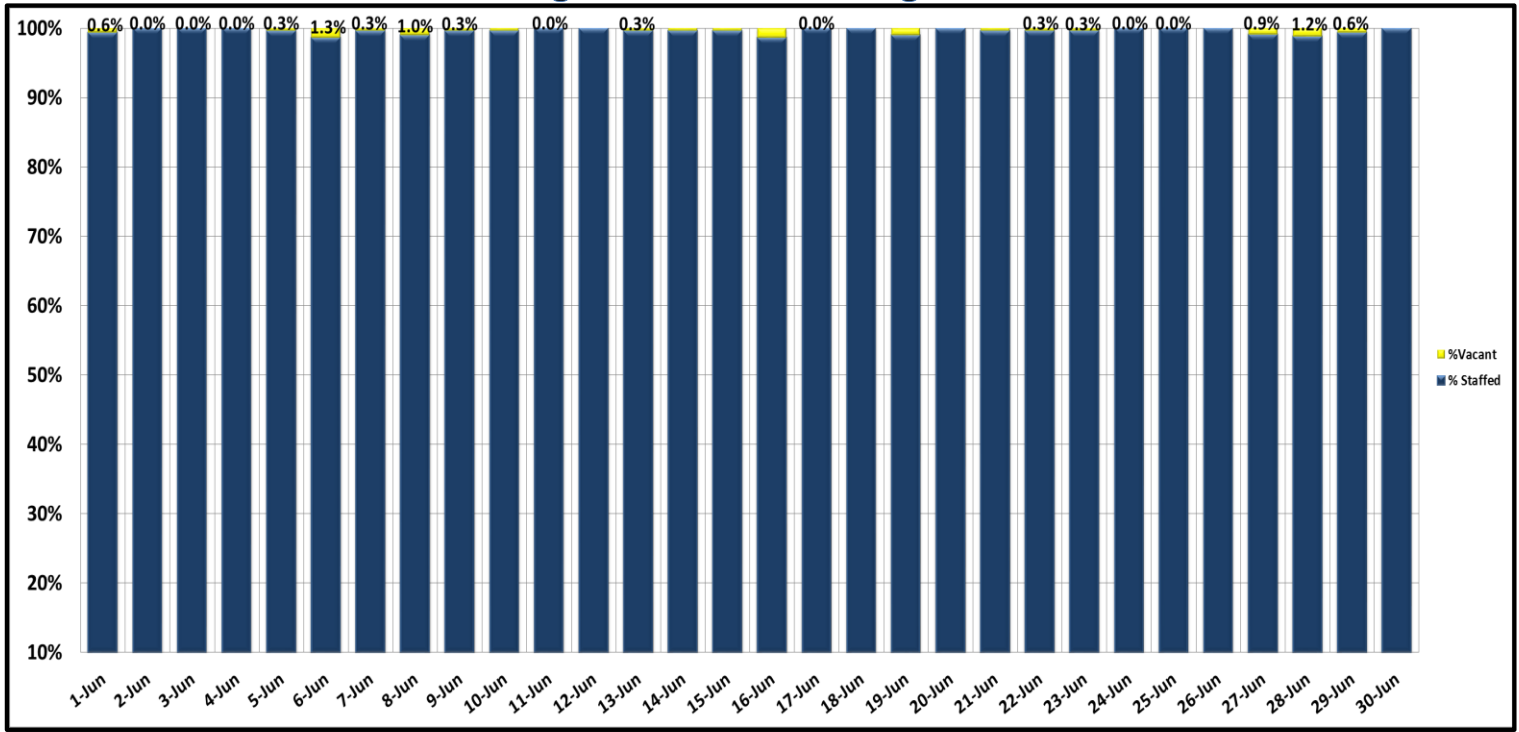
Percentage of Time Spent on the System as a Whole



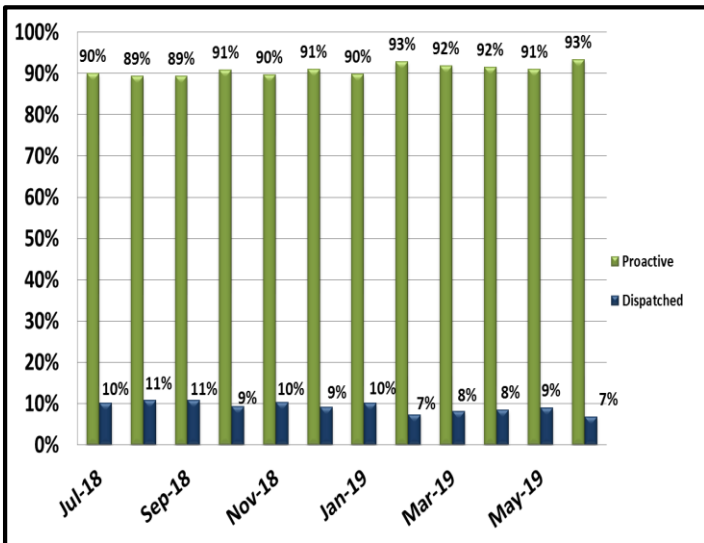
KEY PERFORMANCE INDICATORS

JUNE 2019

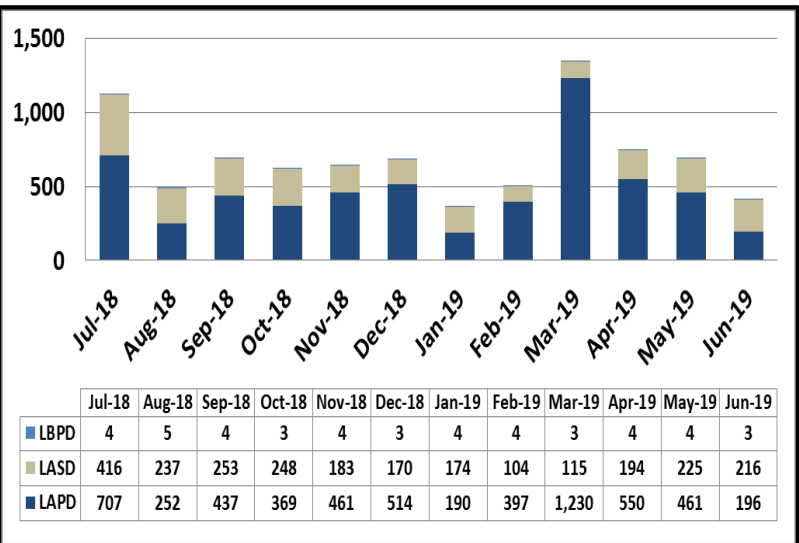
Ratio of Staffing Levels vs Vacant Assignments



Ratio of Proactive vs Dispatched Activity



Grade Crossing Operations



Grade Crossing Operation Locations June:

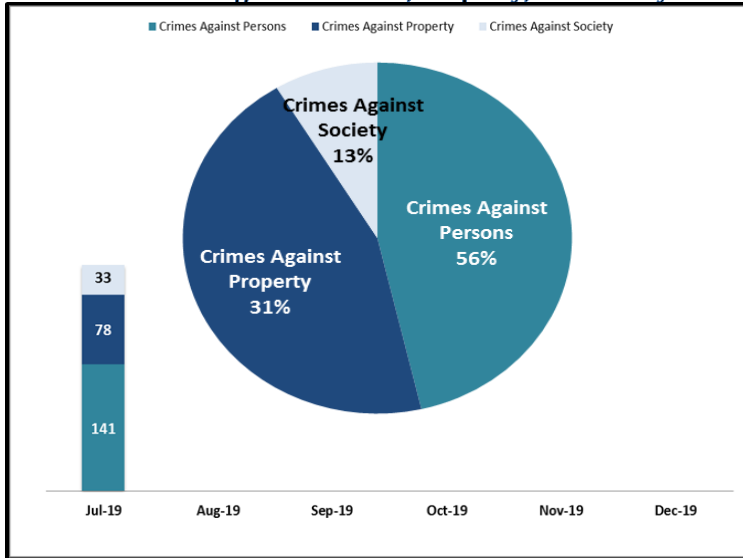
1. Blue Line Stations (93)
2. Expo Line Stations (147)
3. Gold Line Stations (175)

KEY PERFORMANCE INDICATORS

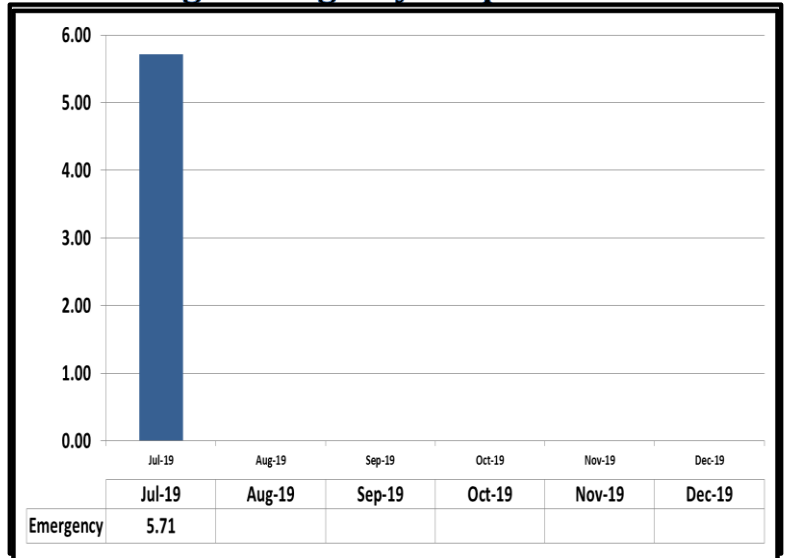
JULY 2019

Attachment C

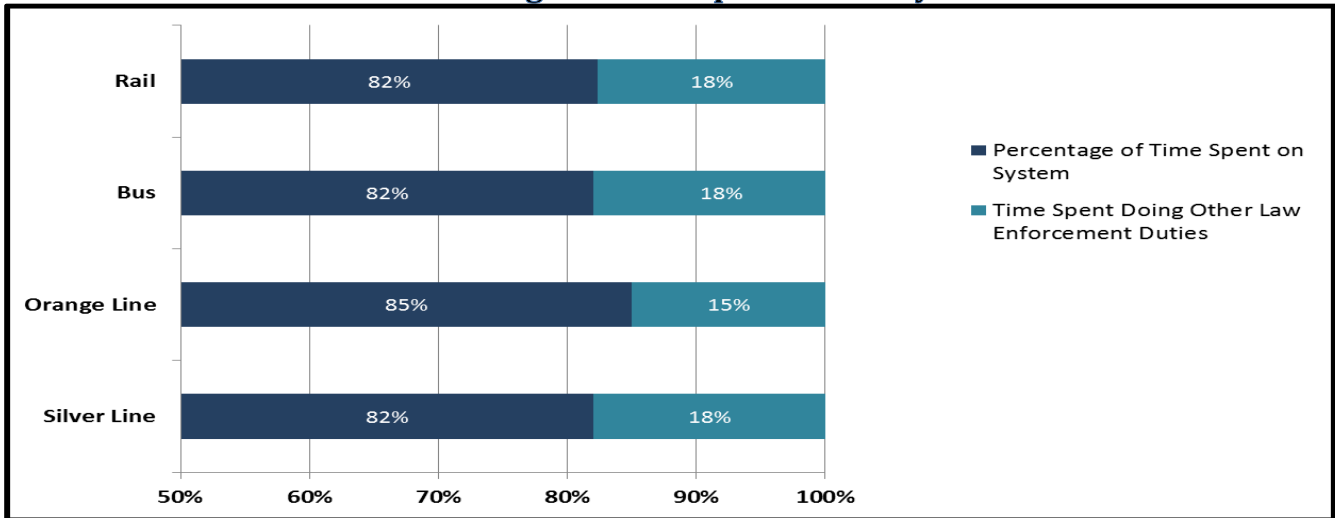
Crimes Against Persons, Property, and Society



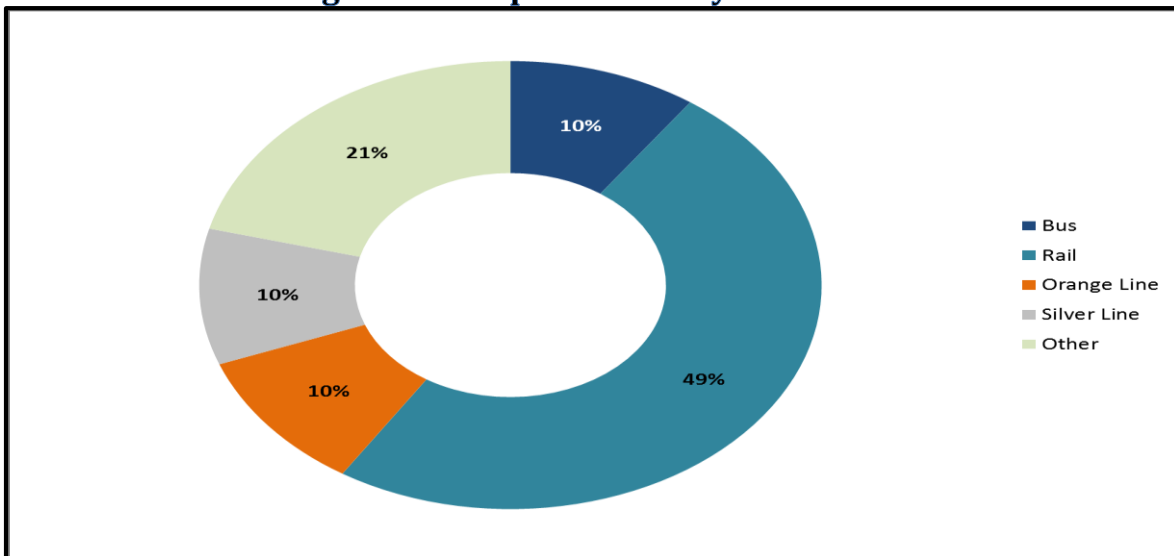
Average Emergency Response Times



Percentage of Time Spent on the System



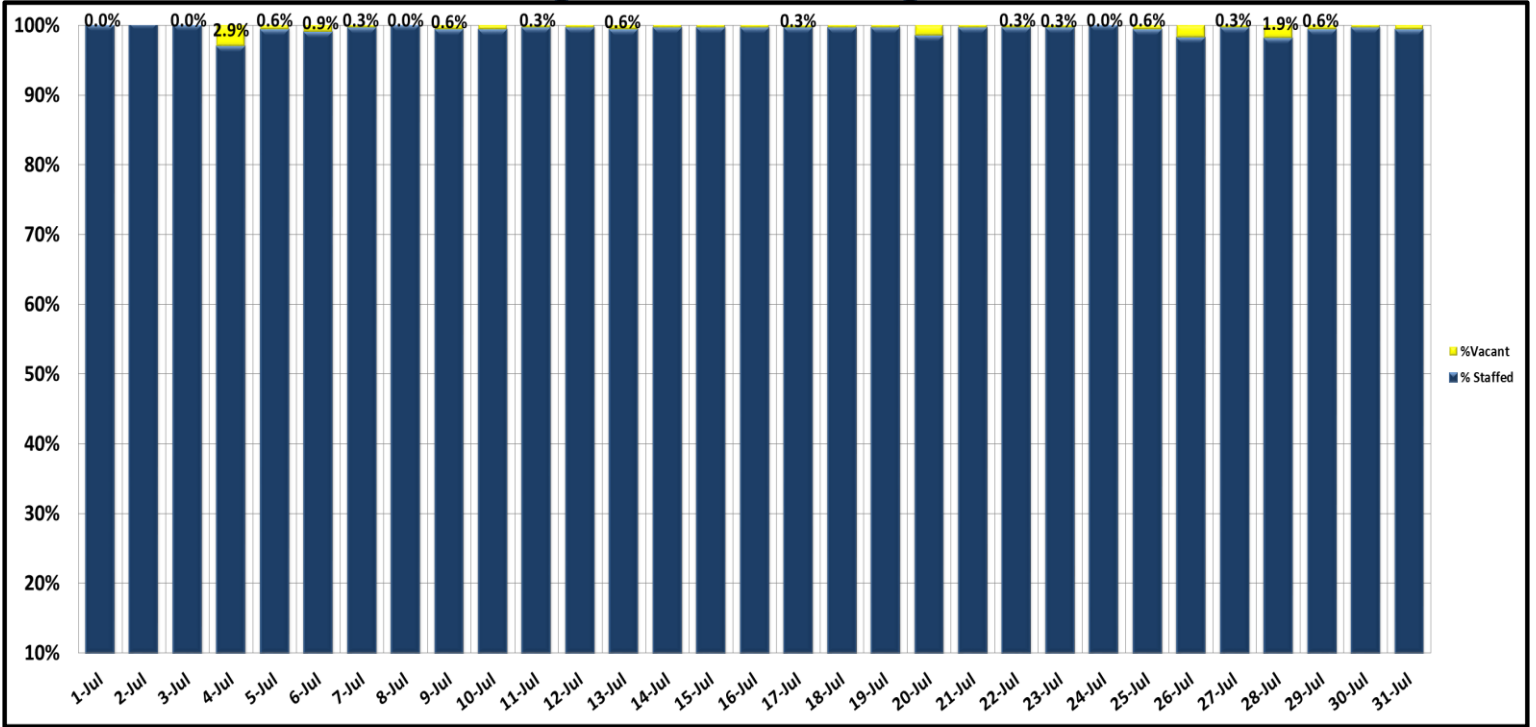
Percentage of Time Spent on the System as a Whole



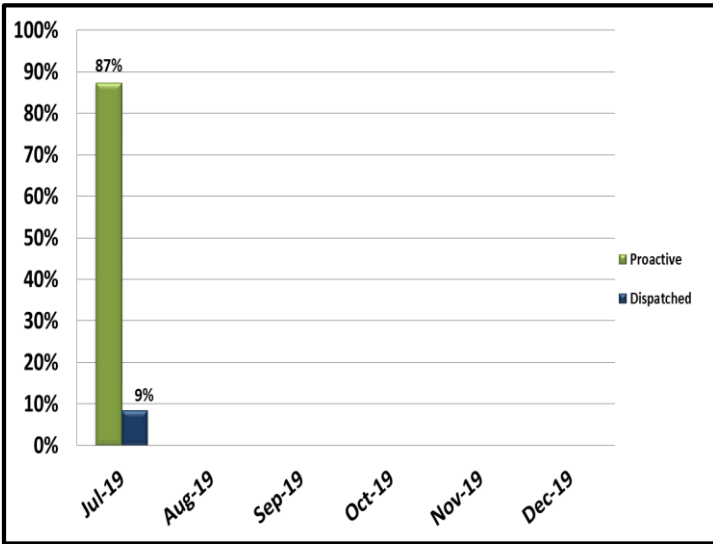
KEY PERFORMANCE INDICATORS

JULY 2019

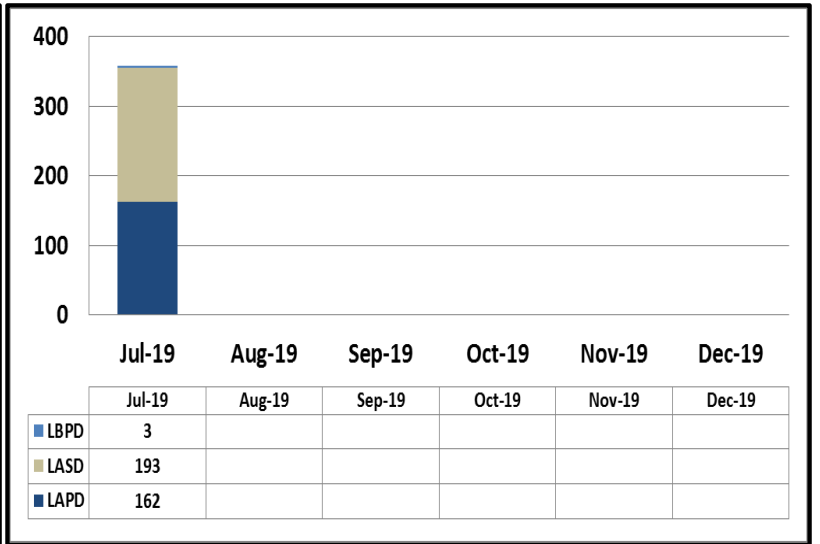
Ratio of Staffing Levels vs Vacant Assignments



Ratio of Proactive vs Dispatched Activity



Grade Crossing Operations



Grade Crossing Operation Locations July:

1. Blue Line Stations (68)
2. Expo Line Stations (45)
3. Gold Line Stations (245)