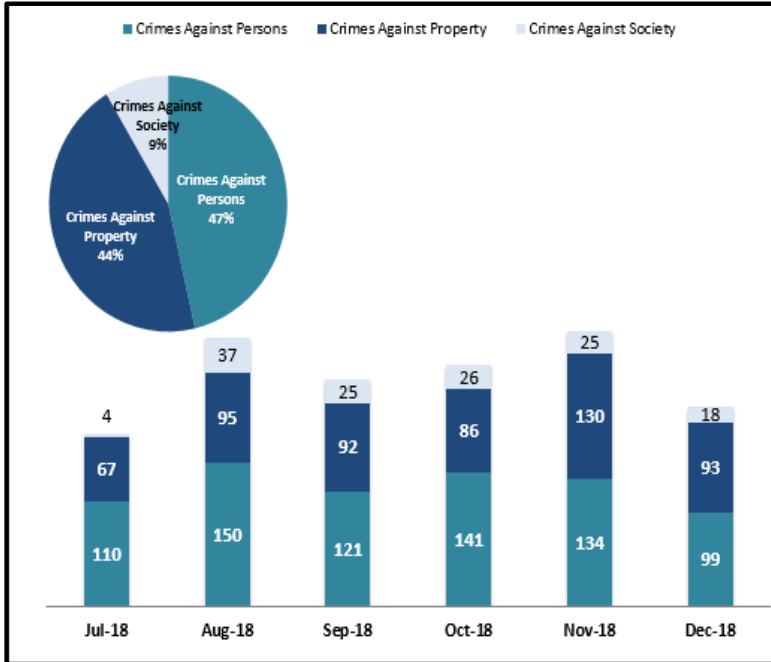


SYSTEM-WIDE LAW ENFORCEMENT OVERVIEW

DECEMBER 2018

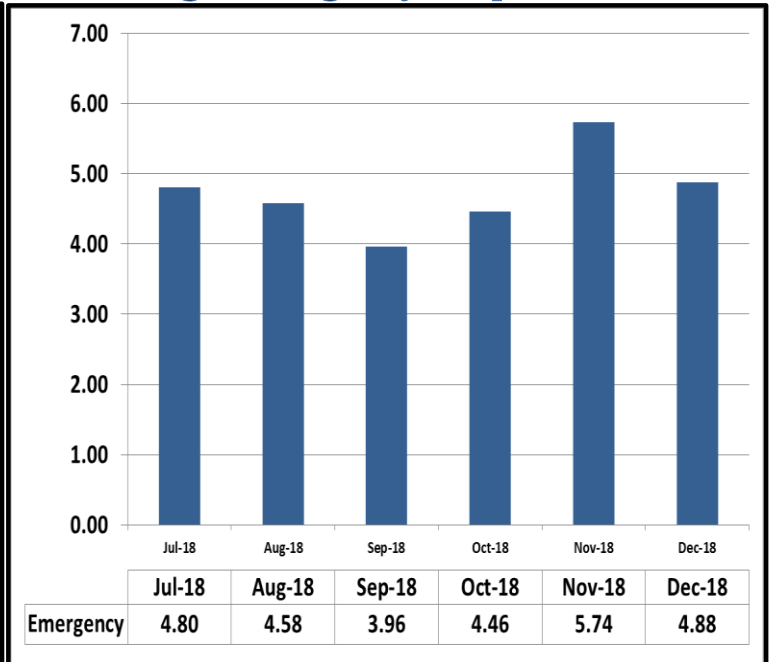
Attachment A

Crimes Against Persons, Property, and Society



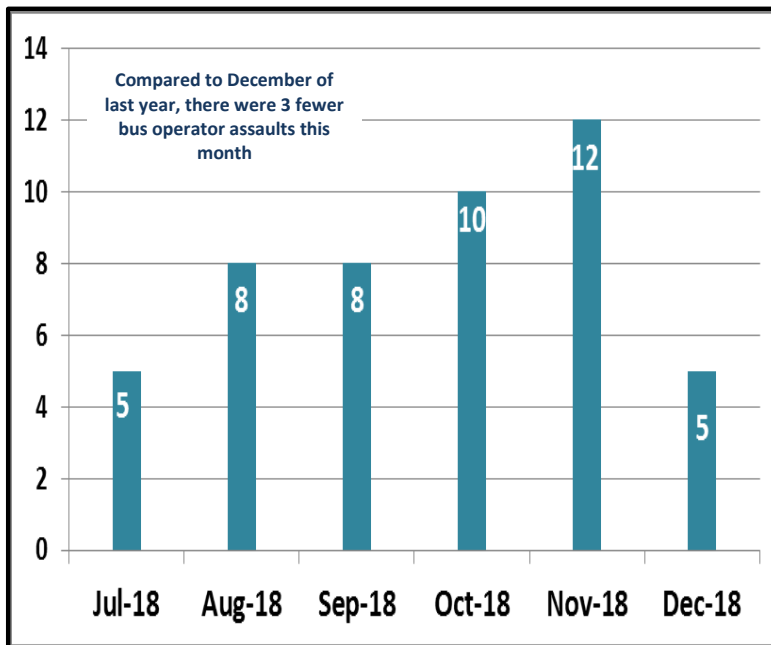
When compared to the same period last year, Crimes Against Persons decreased by 48 crimes, Crimes Against Property decreased by 1 crime, and Crimes Against Society increased by 8 crimes.

Average Emergency Response Times

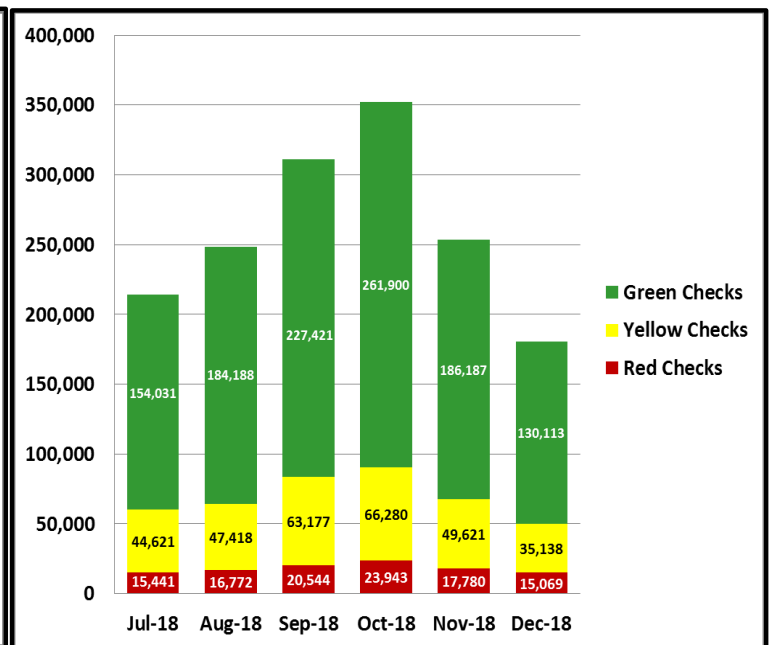


Average emergency response time was 4.88 mins.

Bus Operator Assaults



Fare Compliance



Green Checks- Occurs when a patron has valid fare

Yellow Checks- Occurs when a patron has valid fare, but did not tap at transfer station

Red Checks- Occurs when a patron has invalid fare