

Measure M Independent Taxpayer Oversight Committee

Transit Planning Update

March 5, 2025

Allison Yoh, Ph.D.
Executive Officer

Measure M Transit Projects



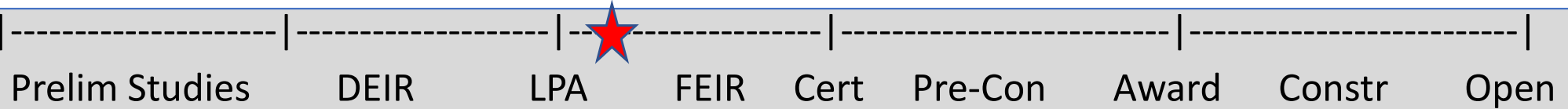
> Major Pillar Projects

- (1) C Line Extension to Torrance
- (2) Sepulveda Transit Corridor
- (3) Eastside Transit Corridor Phase 2

> Other Projects in Planning

- Vermont Transit Corridor
- K Line Northern Extension

C (Green) Line Extension to Torrance



Current Phase	Most Recent Cost Estimate
Final EIR	\$2.2B (2031\$, midpoint of construction)

Recent Activities

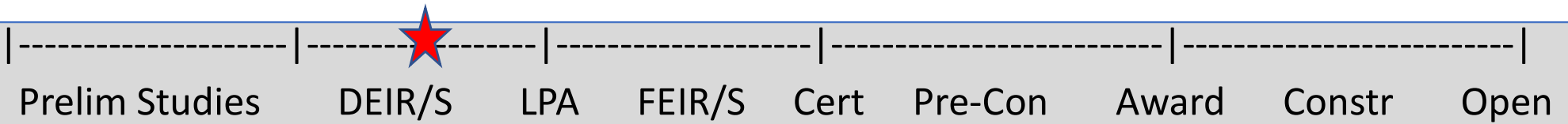
- Briefings to Board staff, city staff, agencies
- Updates to community on project steps (letter, e-blasts, regional online newsletters)
- Notification to residents/businesses and city staff of upcoming field work needed to respond to public comments (e.g., surveys, etc.)

Next Actions

- Complete field work and studies to address public comments on Draft EIR
- Update engineering drawings for Hybrid Alternative (LPA)
- Refine cost estimates and funding plan for LPA
- Meetings with BNSF re: southern portion



Sepulveda Transit Corridor



Current Phase

Draft EIR

Most Recent Cost Estimate

\$5.7B (2015\$)

Recent Activities

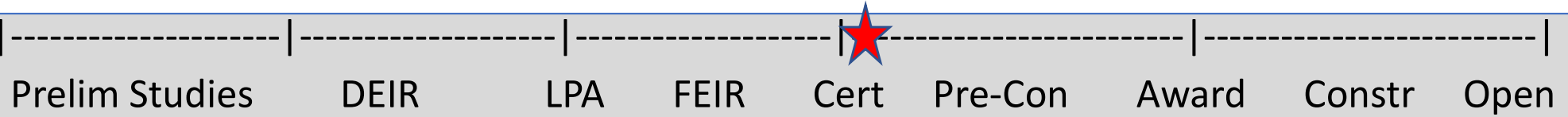
- Completed environmental technical analyses and draft chapters
- Review of Administrative Draft EIR
- Development of cost information
- Planning for community meetings to provide updates

Next Actions

- Scheduling public release of Draft EIR and notification of public meetings



Eastside Transit Corridor Phase 2



Current Phase

Most Recent Cost Estimate

EIR Certified
NEPA TBD

IOS - \$7.9B
(2031\$, midpoint of construction)



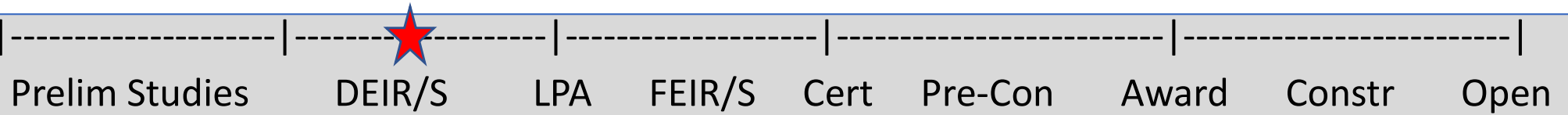
Recent Activities

- Jan/Feb 2025: Community meetings in East LA, Commerce, Montebello and virtual
- Coordination with City of Montebello and stakeholders on right-sizing of MSF
- Requested entry into NEPA with FTA (and Class of Action)

Next Actions

- Continue to coordinate with FTA on NEPA and entry into Project Development phase
- Continue developing project schedule and project delivery scenarios

Vermont Transit Corridor



Current Phase

Environmental

Most Recent Cost Estimate

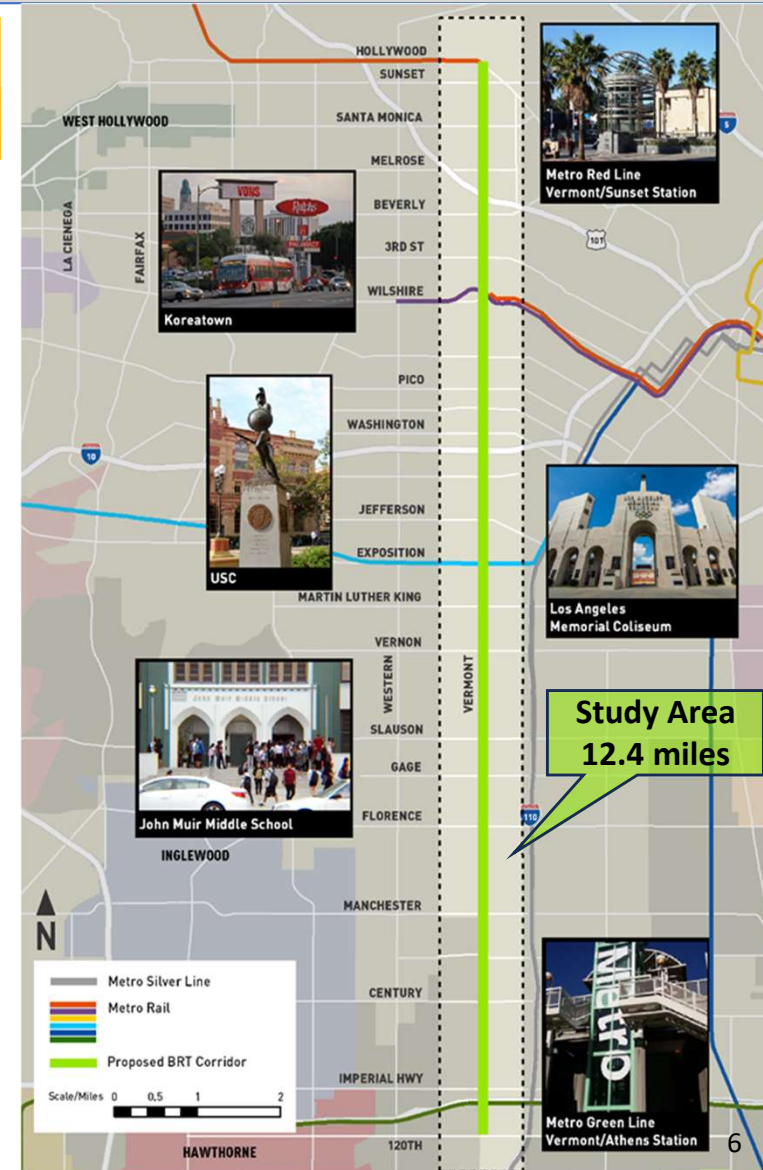
\$425M (2015\$)

Recent Activities

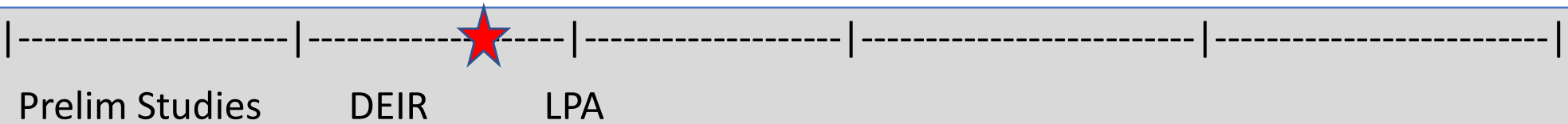
- Dec 2024: Conducted 5 community meetings (3 in-person and 1 virtual) to:
 - Provide updates on near-term service improvements and mid-term BRT
 - Present and receive comments on SB922 documents: Racial Equity Analysis, Residential Displacement Analysis, and Business Case Study
 - 325 meeting participants in total
- Dec 2024: Requested entry into Project Development for Small Starts funding program

Next Actions

- Coordination with FTA on path for NEPA clearance
- Request Board approval of staff recommendation on alternative and recommended CEQA action



K Line (Crenshaw) Northern Extension



Current Phase Most Recent Cost Estimate

EIR

\$2.24B (2015\$)

Recent Activities

- Jan/Feb 2025: Completed technical analysis addressing community concerns about tunnel alignments and underground easements
- Feb 2025: Community meetings and institutional briefings

Next Actions

- Continue to review and synthesize 1,200+ comments received on the Draft EIR
- Review input received during recent community meetings

