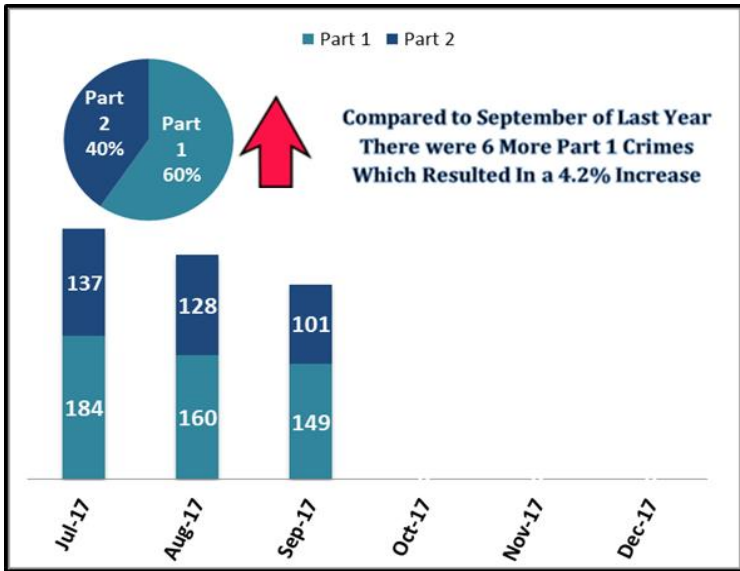


Key Performance Indicators

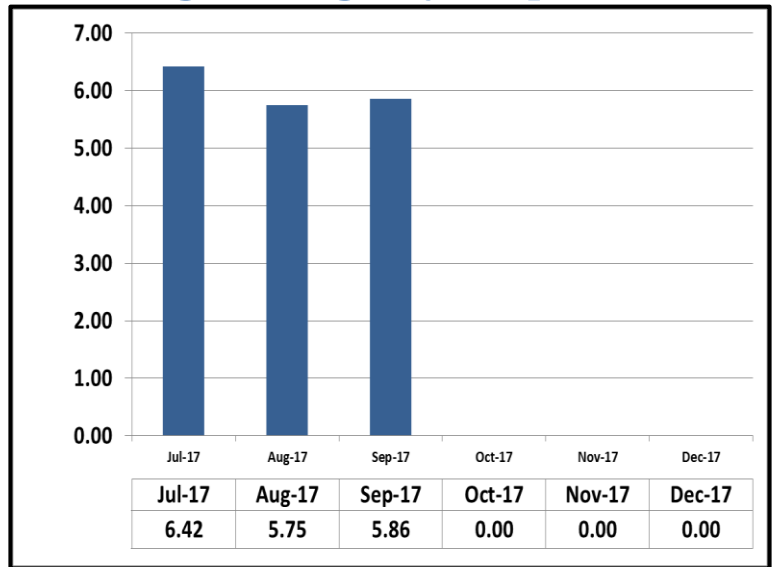
September 2017

ATTACHMENT C

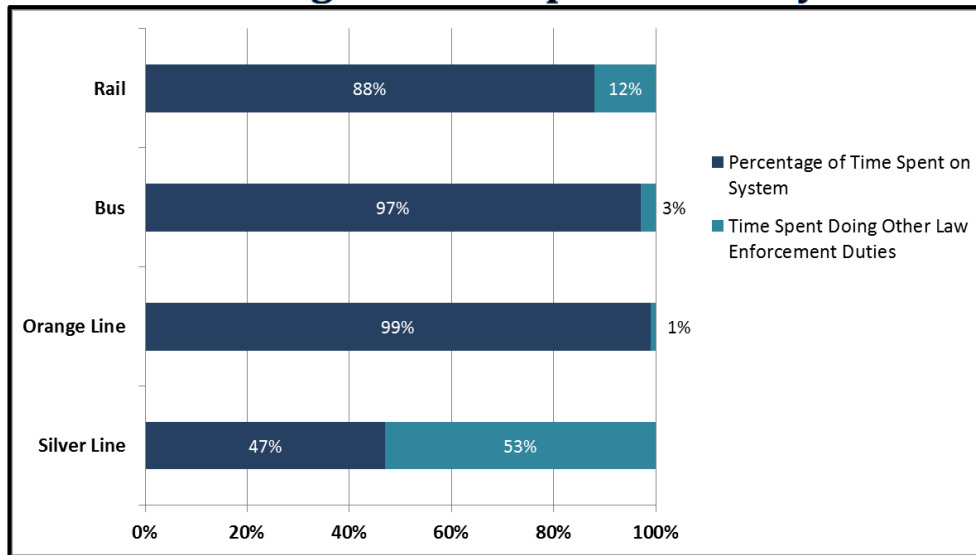
System Wide Part 1 & Part 2 Crimes



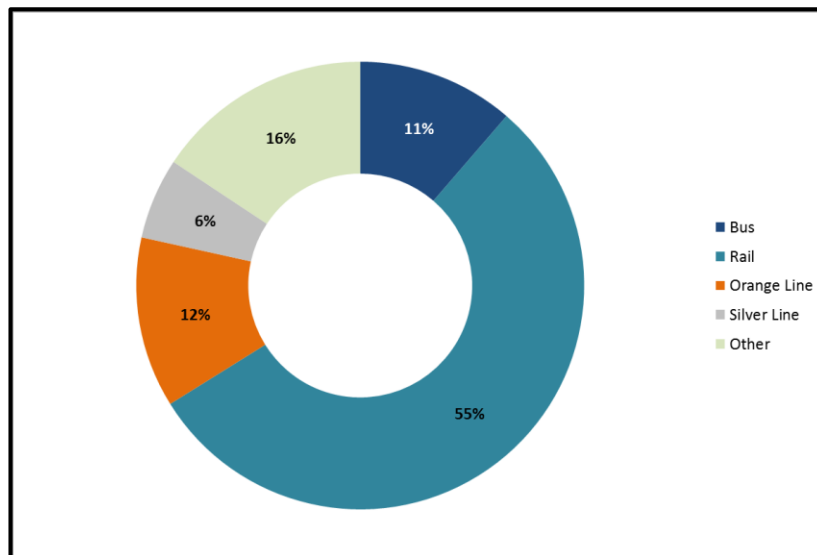
Average Emergency Response Times



Percentage of Time Spent on the System



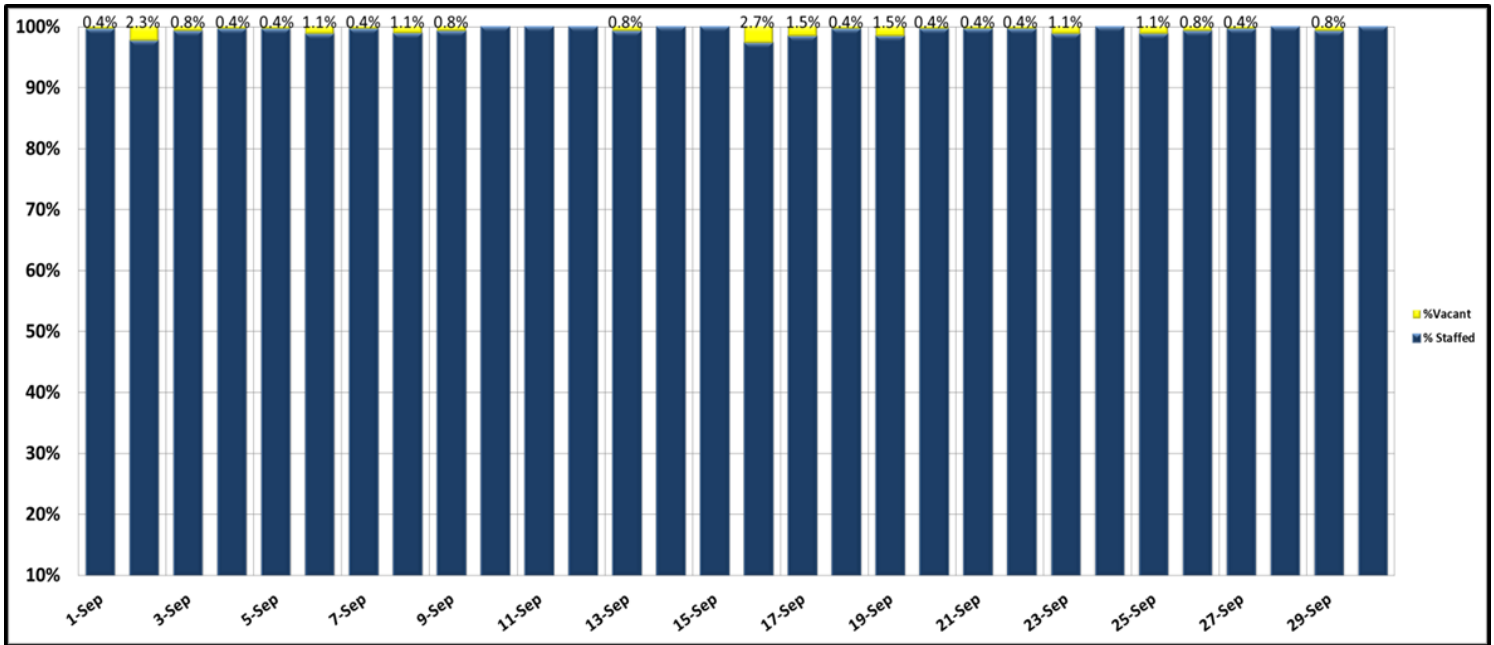
Percentage of Time Spent on the System as a Whole



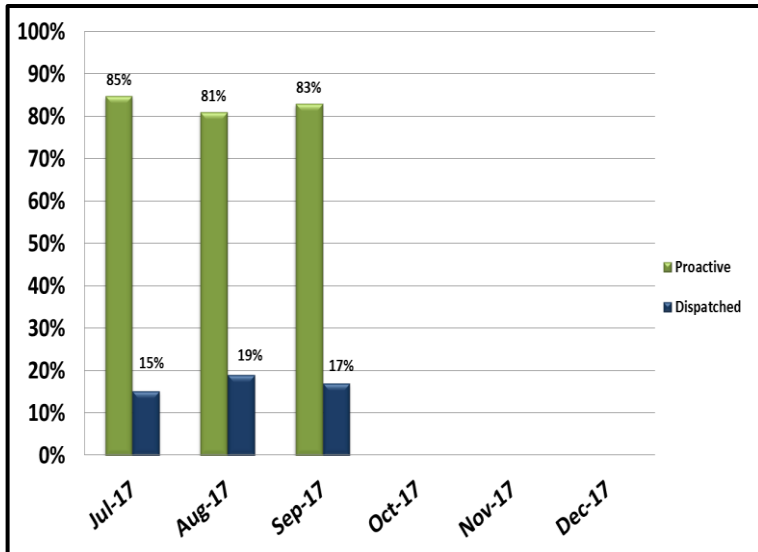
Key Performance Indicators

September 2017

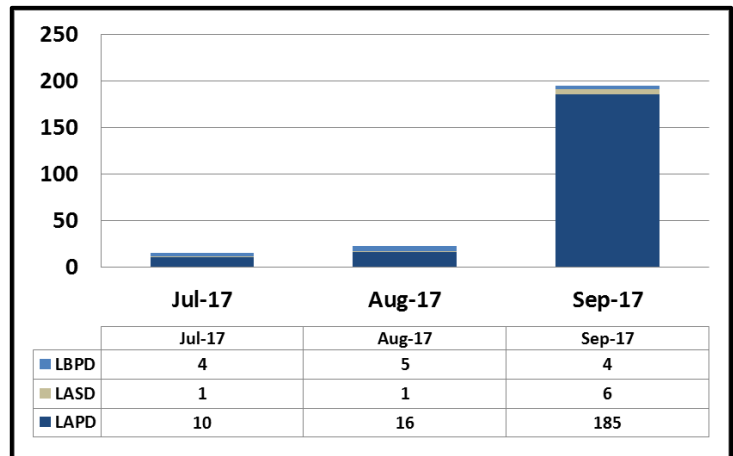
Ratio of Staffing Levels vs Vacant Assignments



Ratio of Proactive vs Dispatched Activity



Grade Crossing Operations



Grade Crossing Operation Locations September:

1. Washington St (71)
2. Flower St (29)
3. 103rd St (5)
4. Wardlow St (1)
5. Long Beach Blvd (3)
6. Exposition Blvd (30)
7. Marmion Way (50)
8. Monrovia (6)