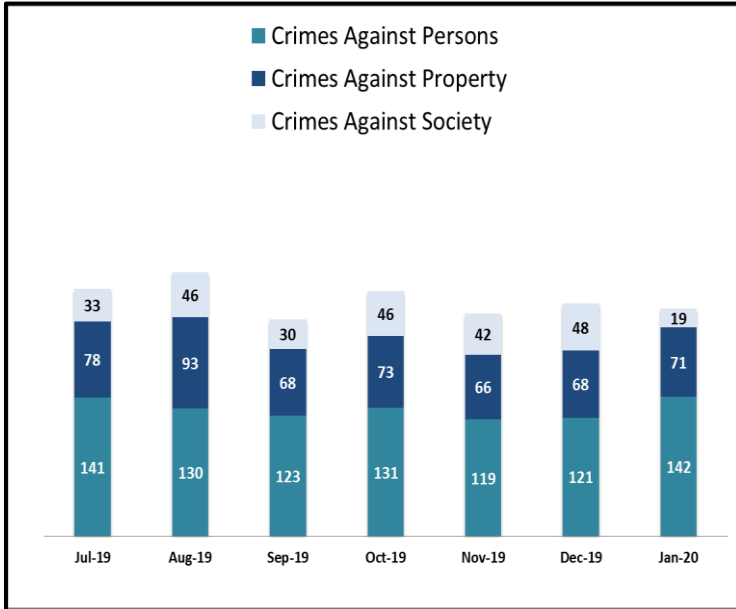


# KEY PERFORMANCE INDICATORS

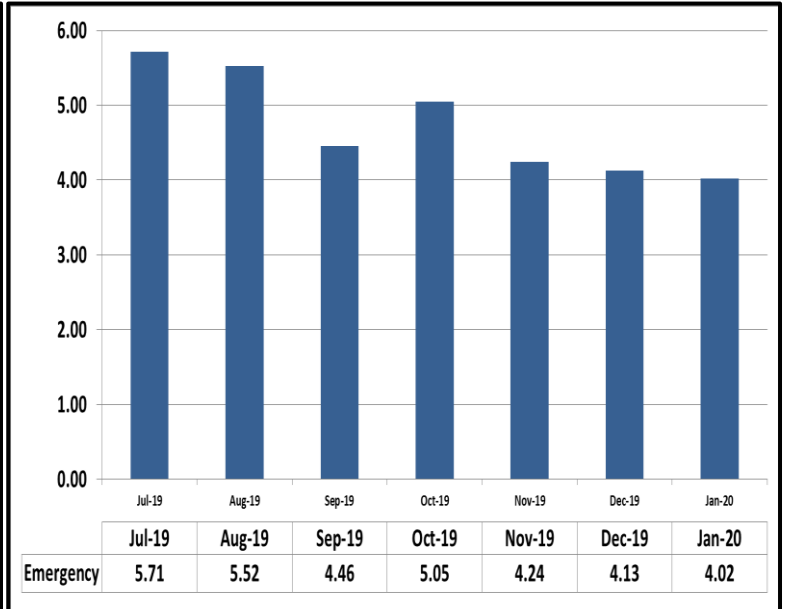
JANUARY 2020

Attachment C

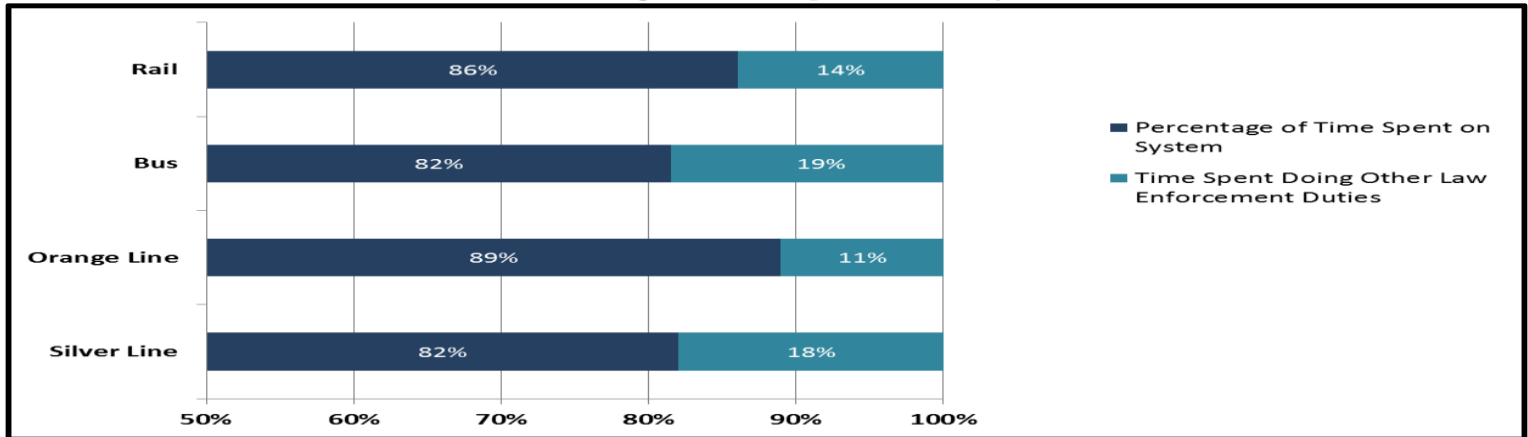
### Crimes Against Persons, Property, and Society



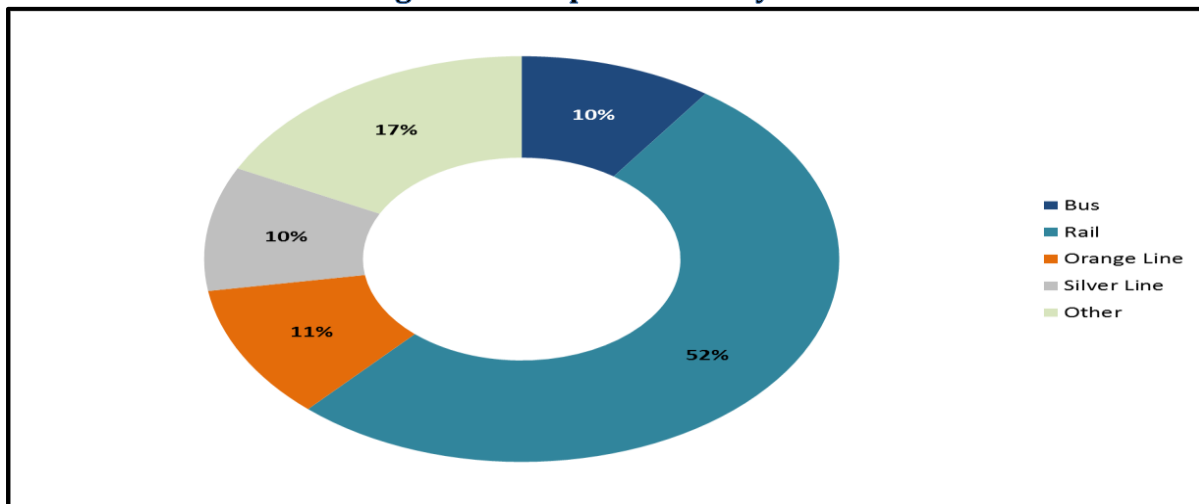
### Average Emergency Response Times



### Percentage of Time Spent on the System



### Percentage of Time Spent on the System as a Whole

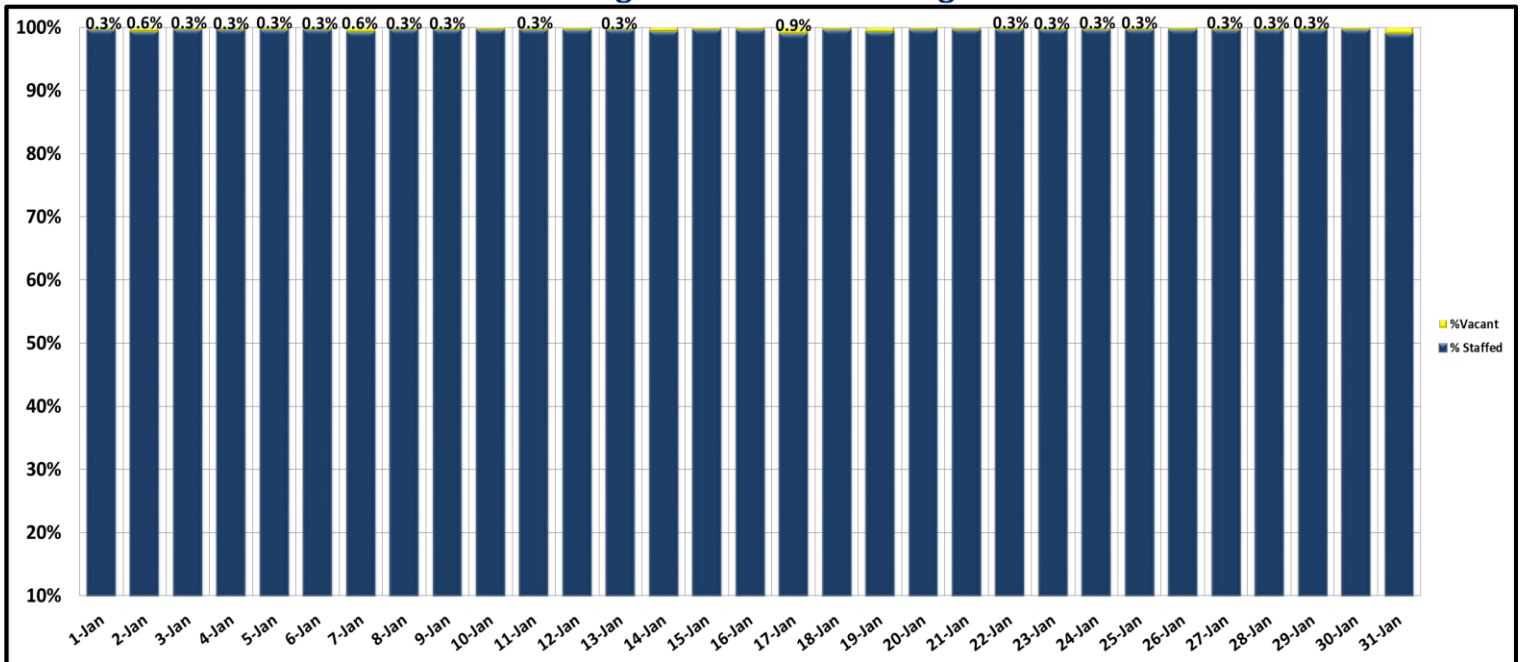


# KEY PERFORMANCE INDICATORS

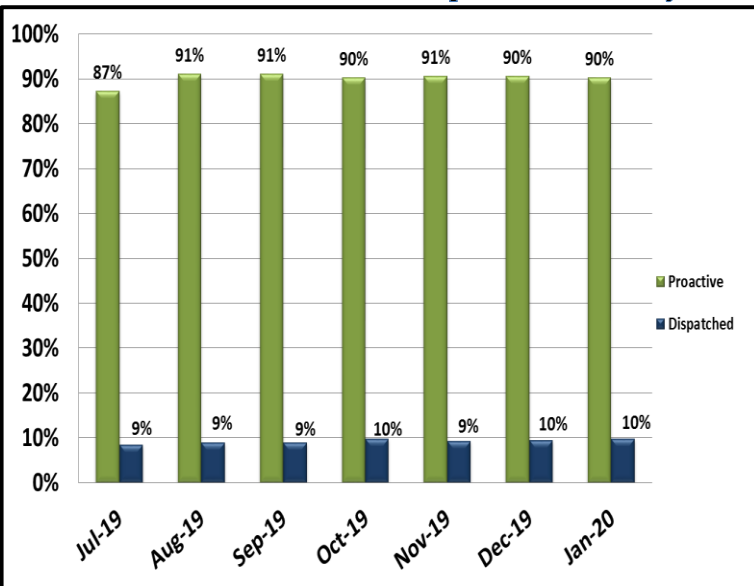
JANUARY 2020

Attachment C

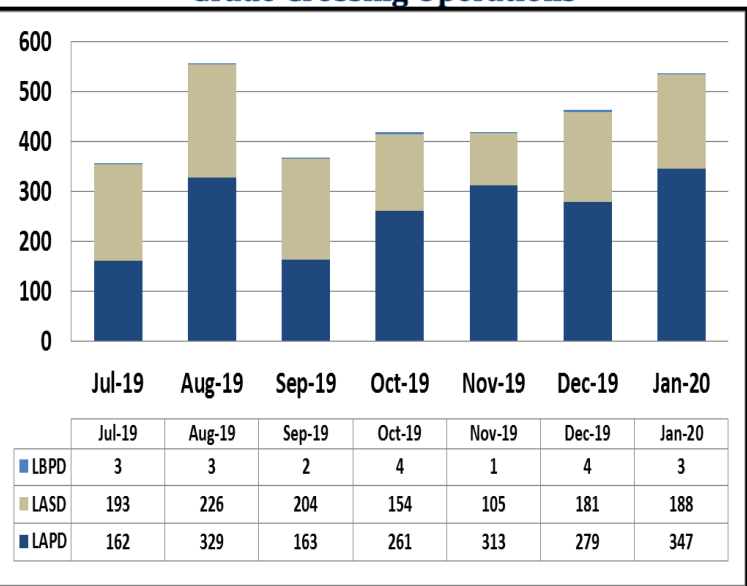
### Ratio of Staffing Levels vs Vacant Assignments



### Ratio of Proactive vs Dispatched Activity



### Grade Crossing Operations



Grade Crossing Operation Locations January:

1. Blue Line Stations (99)
2. Expo Line Stations (190)
3. Gold Line Stations (249)