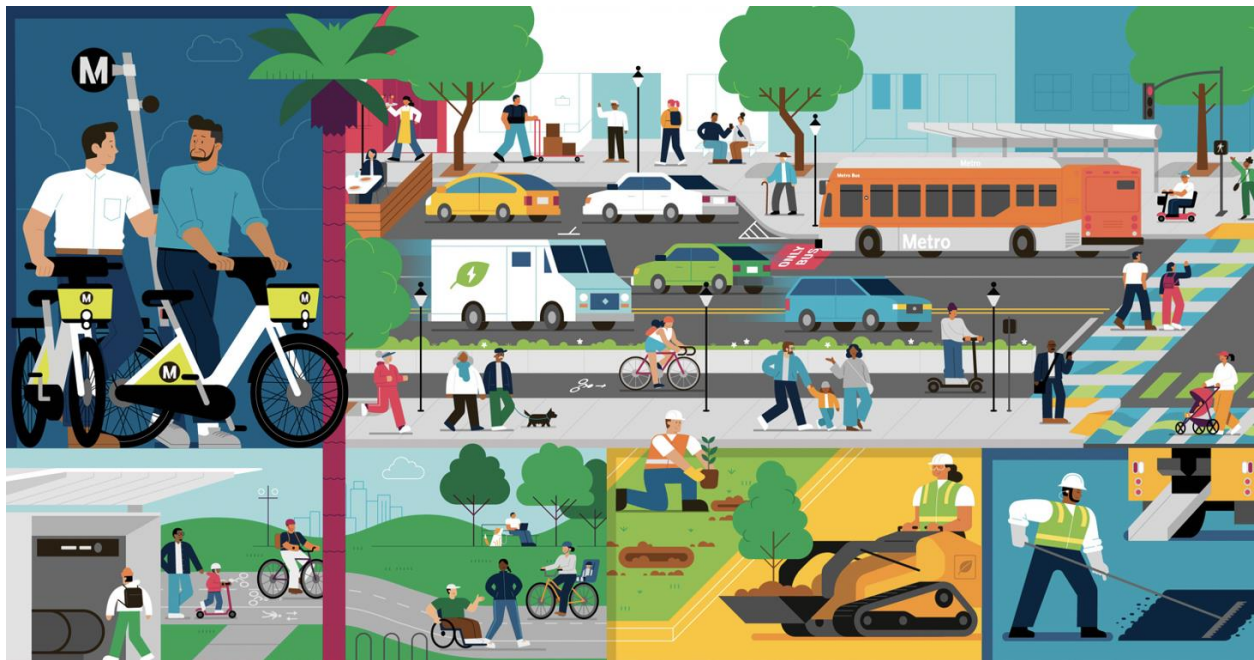


## Appendix 1: Summary of Actions

## Appendix 1: Summary of Actions

Draft





## Appendix 1: Summary of Actions

ACTION	GOAL	RESPONSIBILITY	ACTIVITY STATUS (NEW OR ONGOING)	LEVEL OF EFFORT FOR NEW ACTIVITIES (LOW, MEDIUM, HIGH)
<b>GENERAL COORDINATION</b>				
Name Street Safety Lead and Coordination Team	Safety / Collaboration	CEO	NEW	LOW
Develop and execute actions	Safety/ Data	COORDINATION TEAM	NEW	HIGH
Prepare annual report	Safety / Data / Equity	COORDINATION TEAM	NEW	HIGH
<b>1. OPERATOR</b>				
Continue to evaluate opportunities to deliver bus priority treatments that have safety improvements along corridors that have a history of collisions.	Safety / Data / Equity / Collaboration	OPERATIONS	ONGOING	N/A
Continue to explore and test new bus safety technologies that may provide ways to prevent collisions, injuries and deaths involving passengers and vulnerable road users.	Safety / Data / Equity / Collaboration	OPERATIONS	ONGOING	N/A
Build out and fully utilize Metro transit operations data capacity. Data will be used to: <ul style="list-style-type: none"> <li>&gt; Identify specific locations for immediate safety issues as well as infrastructure improvements in partnership with jurisdictions</li> <li>&gt; Inform Metro plans and capital projects</li> </ul>	Safety / Data / Equity / Collaboration	DATA GOVERNANCE TEAM	NEW	HIGH

> Provide better understanding of incidents to improve training protocols and day-to-day operational practice				
Identify and address deficiencies in current Metro data collection and analyses systems. Includes developing specific recommendations to augment Metro data and analysis resources as needed	Safety / Data / Equity / Collaboration	DATA GOVERNANCE TEAM	NEW	MEDIUM
Integrate Metro transit data with other data compilation and analysis activates within this policy and coordinate and collaborate with other Metro policies	Safety / Data / Equity / Collaboration	DATA GOVERNANCE TEAM	NEW	HIGH
<b>2. PLANNER/BUILDER</b>				
Coordinate and align street safety goals across multiple Metro planning functions. Specifically, goals established in this policy will be coordinated through the concurrent development of the ATSP and incorporated in future updates of the Long Range Transportation Plan and Metro's updates to its Strategic Plan. Currently, Vision 2028, Metro's Strategic Plan, states Metro's commitment to street safety and reduction of collisions and injuries on transit and on streets, which this policy supports.	Safety / Data / Equity / Collaboration	PLANNING	NEW	MEDIUM
Overlay Metro countywide mode-specific plans such as Active Transportation Strategic Plan (ATSP), Goods Movement, Bus Rapid Transit. Work with municipalities and partner agencies to prompt the development of more holistic complete streets network plans.	Safety / Data / Equity / Collaboration	PLANNING	NEW	MEDIUM
Continue and refine current First/Last Mile (FLM) program efforts which provide a street safety lens for Metro transit project planning. Specifically, consistently	Safety / Data / Equity / Collaboration	PLANNING	ONGOING	N/A

deploy newly developed methodology within FLM plans to identify and appropriately address safety issues in future station areas.				
Review and improve, where possible, current safety-focused methodologies in Metro Highway Program project delivery functions wherein Metro plans, designs, and environmentally clears projects to be implemented/maintained by other agencies. Specifically, this review will consist of utilizing planning techniques deployed or required by various partner agencies on highway projects and may further consist of adapting practices utilized in FLM planning or in other non-highway efforts.	Safety / Data / Equity / Collaboration	PLANNING	NEW	MEDIUM
Develop and promulgate a consistent standard for temporary active transportation facilities during construction of Metro projects. This standard will have the effect of providing a minimum baseline comparable to currently existing common local standards, but will also require: <ul style="list-style-type: none"> <li>&gt; Consideration of all modes/users of the roadway with emphasis on reducing harm to vulnerable users</li> <li>&gt; Minimizing detours and closures affecting people walking, riding bicycles, people with disabilities and/or using mobility devices.</li> </ul>	Safety / Data / Equity / Collaboration	PLANNING & PROGRAM MANAGEMENT	NEW	HIGH
Identify opportunities to more effectively address issues identified in transit operational data including: <ul style="list-style-type: none"> <li>&gt; Incorporating street design improvements in Metro capital projects</li> </ul>	Safety / Data / Equity / Collaboration	DATA GOVERNANCE TEAM	NEW	HIGH

<ul style="list-style-type: none"> <li>&gt; Exchanging data with organizations for their use in Vision Zero and related programs</li> <li>&gt; Consideration as a project selection criterion in discretionary funding programs</li> <li>&gt; Establishing clear points of contact with all affected cities to address reported issues</li> </ul>				
<b>3. FUNDER</b>				
Refine safety related criteria and requirements in Metro discretionary, competitive funding programs. Refinements may include geographic targeting to preference funding safety improvements to identified hot spots, requirements for all participating projects such as integration of best practices for project design.	Safety / Equity / Collaboration	PLANNING	NEW	MEDIUM
Encourage and highlight best practices for Local Return. Consider and develop ways to track and report how funded projects are addressing safety needs.	Safety / Equity / Collaboration	PLANNING	NEW	MEDIUM
<b>4. DATA COLLABORATOR</b>				
Develop methodologies for analyses such as deploying a standard of disaggregated demographic data collection	Safety / Data / Equity / Collaboration	CONSORTIUM	NEW	HIGH
Promote data collection and reporting by jurisdictions throughout Los Angeles County, including identifying opportunities to prompt and support active transportation user counts especially by local jurisdictions	Safety / Data / Equity / Collaboration	CONSORTIUM	NEW	HIGH

Encourage collection and metrics specific to equity considerations such as demographic data collection and analysis of disproportionate impact.	Safety / Data / Equity / Collaboration	CONSORTIUM	NEW	MEDIUM
Partner with federal, state, regional, and local stakeholders who are also seeking to improve data collection and advance street safety	Safety / Data / Equity / Collaboration	CONSORTIUM	NEW	MEDIUM
Develop opportunities to utilize RIITS to better link and share travel, speed and safety data and generally consider and develop approaches to make data easily available.	Safety / Data / Equity / Collaboration	CONSORTIUM	NEW	HIGH
Craft a data implementation plan comprised of the above and other actions determined by the team, and to be included in future updates prepared under this policy	Safety / Data / Equity / Collaboration	CONSORTIUM	NEW	HIGH
<b>5. ADVOCATE</b>				
Metro's State and Federal Legislative Programs include a goal to "[m]onitor and support legislation that would authorize the cities and unincorporated areas of Los Angeles County to develop and implement strategies to reach Vision Zero goals of improving safety and eliminating traffic-related fatalities." Upon adoption of a new Metro Street Safety, Data Sharing and Collaboration Policy, future annual legislative programs should include a goal to advance implementation of the Street Safety, Data Sharing and Collaboration Policy.	Safety	GOVERNMENT RELATIONS	ONGOING	N/A
<b>6. EDUCATOR</b>				

Provide online and in-person transit safety education to schools, recreation centers, libraries, community centers within a 1.5-mile radius of at-grade rail lines.	Safety	Community Education & Mobility Programs, Arts + Community Enrichment Team	ONGOING	N/A
Provide transit safety education to senior centers, and independent living facilities throughout Los Angeles County.	Safety	Community Education & Mobility Programs, Arts + Community Enrichment Team	ONGOING	N/A
Collaborate with Operations and Corporate Safety to evaluate trends & create safety outreach.	Safety	Community Education & Mobility Programs, Arts + Community Enrichment Team	ONGOING	N/A
Conduct educational and marketing campaigns focused on transit safety, including September Rail Safety Month. Campaigns will be targeted on digital & social media platforms, including Twitch.TV, Facebook, Instagram, Snapchat, Connected TV, and YouTube. Additional outreach targets ads at grocery stores and gas stations, for transit riders and drivers.	Safety	Community Education & Mobility Programs, Arts + Community Enrichment Team	ONGOING	N/A
Continuous engagement at local community events within a 1.5-mile radius of at-grade Metro rail lines.	Safety	Community Education & Mobility Programs, Arts + Community Enrichment Team	ONGOING	N/A
Provide hands on travel training for teachers, students, older adults, and community members as requested.	Safety	Community Education & Mobility Programs,	ONGOING	N/A



		Arts + Community Enrichment Team		
Deploy Rail Safety Guides.	Safety	Community Education & Mobility Programs, Arts + Community Enrichment Team	ONGOING	N/A
<b>7. INNOVATOR</b>				
Continue to work with the local jurisdictions, agencies, and vendors/manufacturers to identify and advance promising connected vehicle technology and intelligent transportation systems that improve street safety, including through partnerships, unsolicited proposals and RFIs.	Safety / Data / Equity / Collaboration	OFFICE OF INNOVATION & OPERATIONS	ONGOING	N/A
Pilot vehicle safety technologies such as advanced emergency braking, emergency lane keeping assist, intelligent speed assistance and drowsiness and distraction detection on select Metro, local agencies', and private entities' vehicles; track their performance and consider implementing those that improve safety and reduce risk across fleets.	Safety / Data / Equity / Collaboration	OFFICE OF INNOVATION & OPERATIONS	NEW	HIGH
Monitor developments in semi-autonomous and autonomous vehicle technology to encourage that they are deployed in a way that improve the speed and reliability of transit and that they are not deployed on public streets if they cannot adequately detect and protect pedestrians, cyclists and persons using wheelchairs and other mobility assistance devices. Metro can also encourage autonomous vehicles in	Safety / Data / Equity / Collaboration	OFFICE OF INNOVATION & OPERATIONS	ONGOING	N/A

urban areas be introduced in shared fleets so that they can be well-regulated and actualize the promise of reductions in vehicles, parking, and congestion.				
<b>COMPLETE STREETS</b>				
Refine and make available tools, trainings, and other resources as prompted in the updated Complete Streets Policy	Safety / Data / Equity / Collaboration	PLANNING	NEW AND ONGONG	MEDIUM