



Metro is making it easier to walk, bike, and roll.

ACTIVE TRANSPORTATION UPDATES

MEASURE M INDEPENDENT TAXPAYER OVERSIGHT COMMITTEE

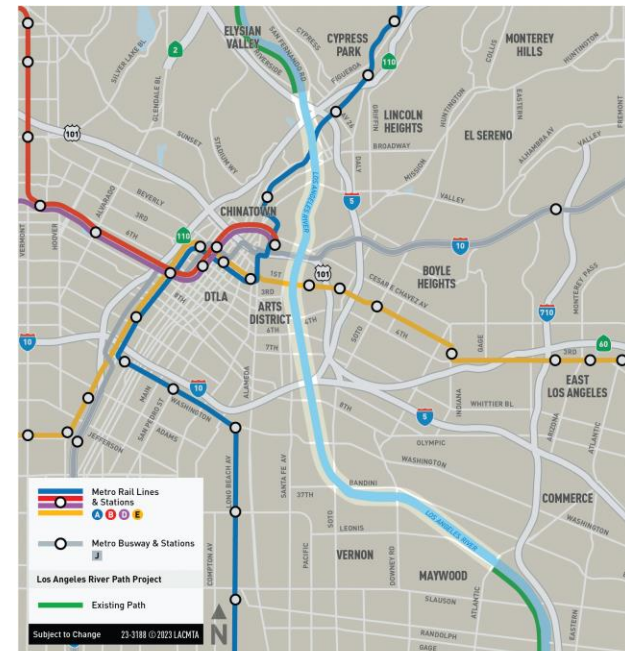
DECEMBER 6, 2023

LA River Waterway & System Bike Path (Central Cities)

- > Project led by Metro
- > Environmental and Design Progress
 - 30% design completed for all three alternatives
 - Draft EIR release anticipated in Spring 2024 with a 60-day comment period
 - Selection of a single alternative and start of 60% design in Winter 2024/2025 (*subject to comments from both USACE and LADWP that may affect project definition and EIR alternatives*)
 - Advancement of 60% design is subject to determination of the Project's final owner/O&M entity (*since Metro will not be financially responsible for O&M of the completed project*)
- > Agreements with Third Parties
 - MCA with the City of Vernon is ready for execution
 - Agreements needed with the County and City of LA, LADWP, Railroads, and Caltrans
 - O&M lead, external to Metro, yet to be determined



Looking south: near Riverside Drive



Project Area Map

Complete LA River Bike Path (San Fernando Valley)

- > LA Bureau of Engineering is Lead Agency
- > 13 miles of bikeway gap closures
 - 9 segments from Vanalden Ave to Forest Lawn Dr
 - Segments 1-2 in Design phase; Segments 3-9 Design initiation TBD
- > \$60M in Measure M funding between FY23-FY28; agreement pending
- > City of LA awarded \$34M in ATP Cycle 6 funding
- > Metro will not be financially responsible for O&M



Segment of LA River Bike Path completed in 2014

Project Corridor Map

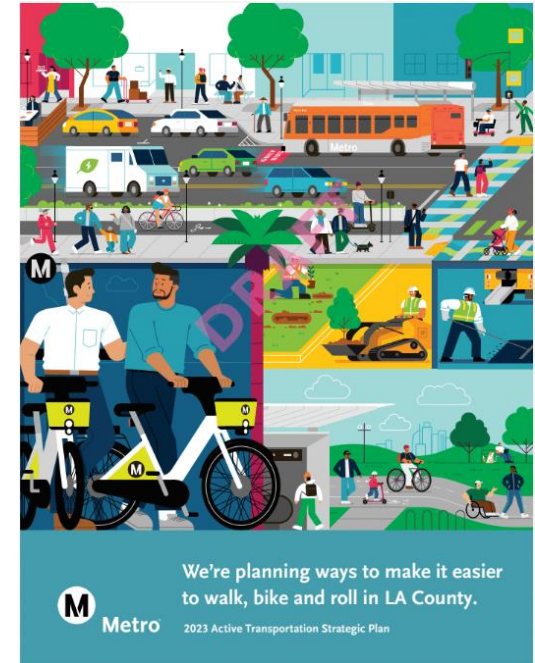
Multi-Year Subregional Programs

- > Board approved an additional \$20M for a total of \$68M programmed for **South Bay Cities** projects:
 - Bike Lanes – Carson St, Figueroa St, Main St, Victoria St
 - Bike Lanes – 223rd St, Avalon Blvd, Central Ave, Del Amo Blvd, University Dr
 - South Bay Local Travel Network-El Segundo
 - Lennox Vision Zero Traffic Enhancements
 - Highland Ave Corridor Improvements
 - Aviation Blvd Pedestrian Enhancements
 - Riviera Village Pedestrian Enhancements
 - South Bay Local Travel Network-Redondo Beach
- > Board approved an additional \$2M for a total of \$29M programmed for **Westside Cities** projects:
 - Sepulveda Corridor Mobility Lane Project
 - Fountain Ave Protected Bike Lanes



Active Transportation Strategic Plan (ATSP)

- > Presented to Metro Board for adoption in November 2023
- > First update of 2016 plan and includes:
 - [StoryMap](#)
 - [First/Last Mile Existing Conditions Dashboard](#)
 - [Bikeway Benefits Dashboard](#)
- > Defines and prioritizes regional AT network
 - 602 First/Last Mile Areas
 - 81 Pedestrian Districts
 - 1,433 mi of Regional Bikeways
- > Prioritizes network based on equity, safety & comfort, accessibility, connectivity, sustainability, demand & community support, and project readiness to support Metro's funding role
- > Near-term implementation goal of Top 2.5% of projects by subregion



Metro Active Transport Program



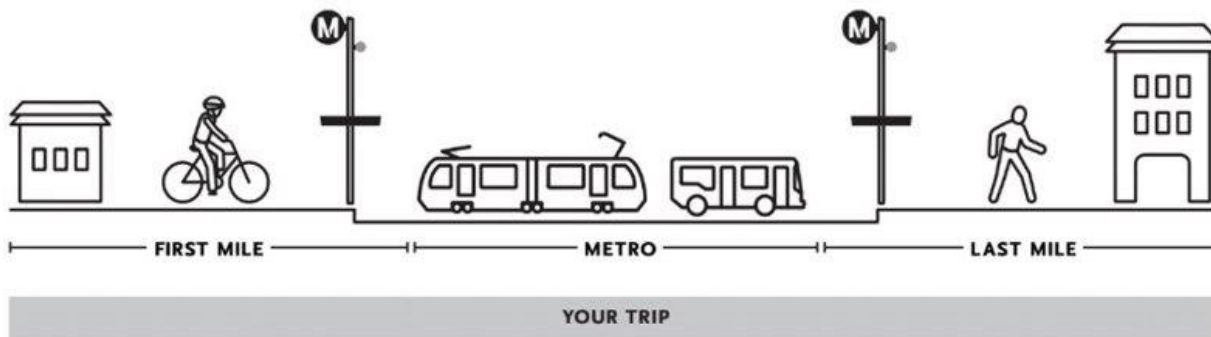
Metro Active Transport Program Cycle 1 Projects (approved in 2021)



- > Measure M competitive grant program dedicated for active transportation (\$857M thru 2057)
- > Implementation of ATSP regional network
- > \$63.1M in Cycle 1 projects approved by Board in 2021
 - 5 AT Corridors
 - 11 FLM Areas
- > Cycle 2 in development
 - Standardize process for project initiation
 - Develop and test new partnership models
 - Adapt successful models from other modes
 - Target award FY 2024-2025

First/Last Mile Program

- > FLM Plans Currently in Progress:
 - West Santa Ana Branch (complete spring 2024)
 - Eastside Phase 2 (complete summer 2024)
- > Commencing soon
 - North Hollywood to Pasadena BRT
- > Other
 - FLM project coordination for LA28 Games preparation



©NOT TO SCALE



Thank you



James Andrew, *Senior Manager Planning*
Metro
One Gateway Plaza, MS 99-22-22
Los Angeles, CA 90012



213.547.4306



andrewj@metro.net



metro.net/about/active-transportation/



@metrolosangeles



losangelesmetro