

Hope / 2nd Street Bridge Pedestrian Easement Agreements

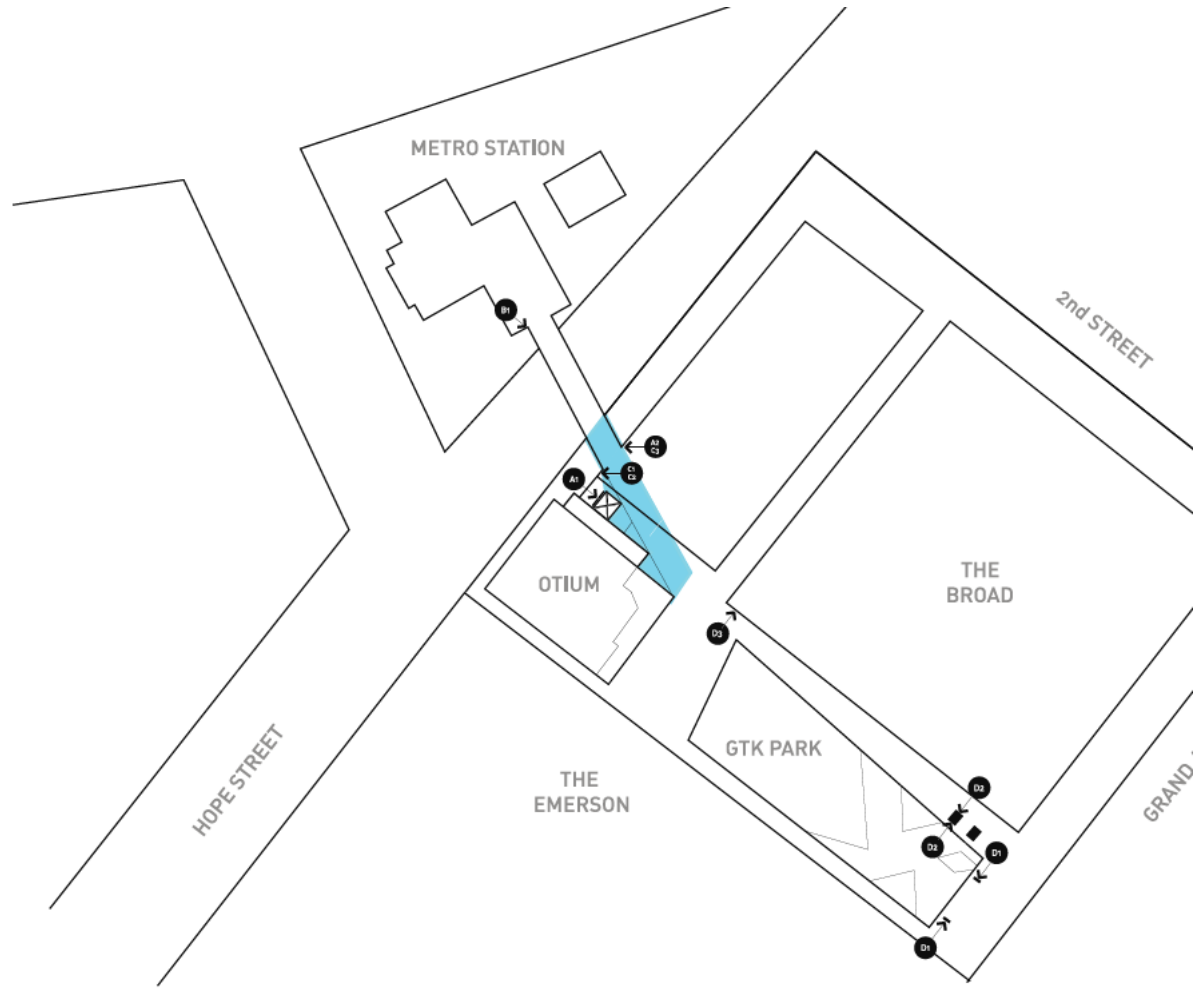
Metro Board of Directors

Executive Management Committee

March 2017



Site Plan



Major Agreement Terms

Easement

- Easement to construct the bridge including support column and seismic joint
- Access for Metro Patrons over limited portion of garage roof to the Plaza
- Development could be built over the easement (20 ft vertical envelope) or the easement could be incorporated into future development
- Easement for installation and maintenance of minimal signage and security gate

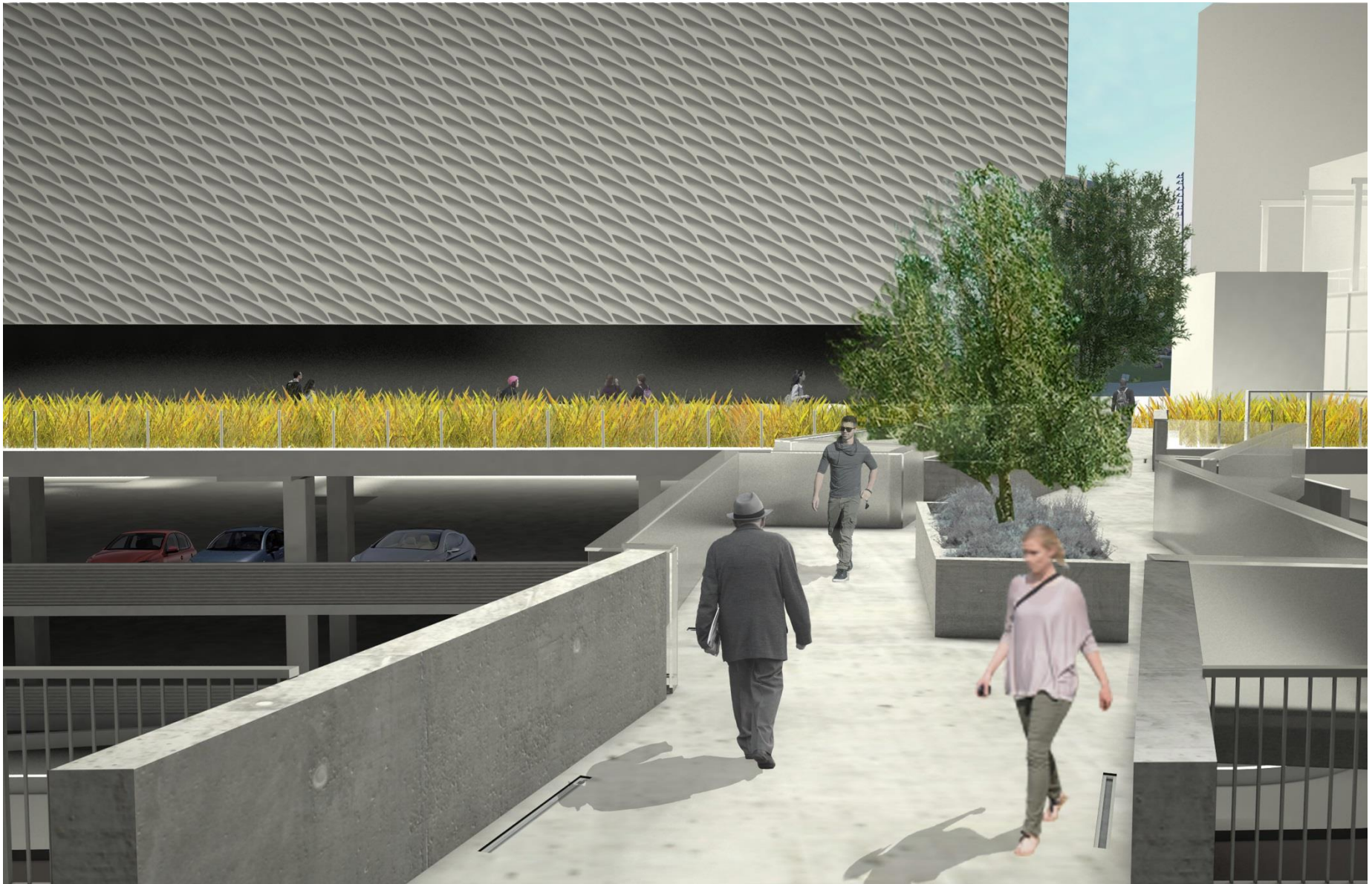
Plaza

- Plaza REA cannot be amended to disallow Metro patrons access
- Minor Metro signage easement
- Metro contribution to maintenance - \$50,000 annual with escalation

Conceptual Bridge Design

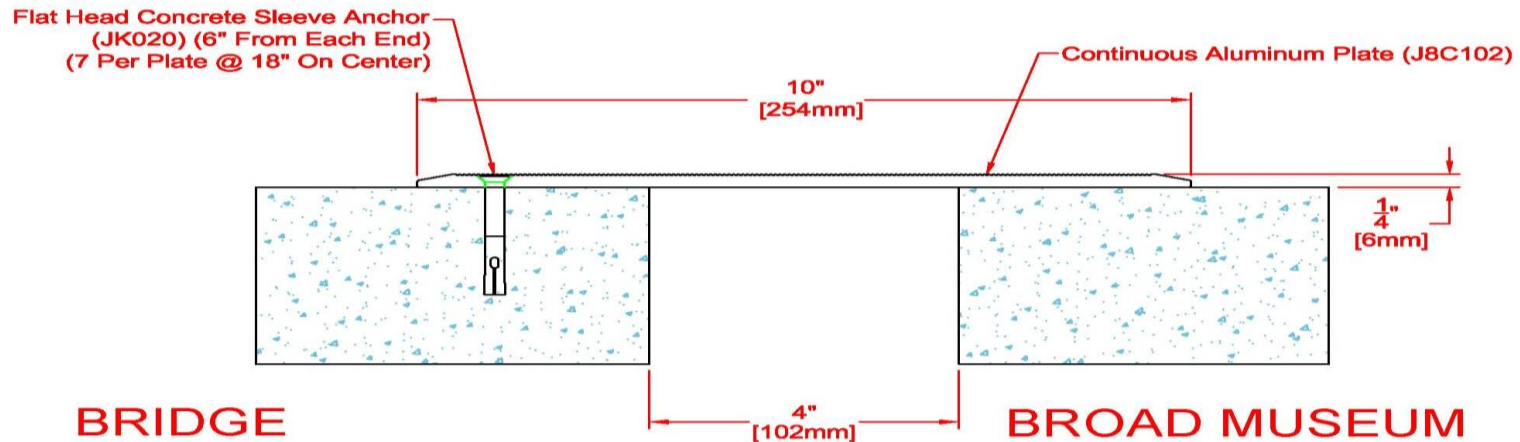


Conceptual Bridge Design






Bridge Connection to Garage

- Supported independently from garage with its own support column
- Seismic joint connects the garage and bridge
- Sliding security gate: 60" high, manually operated, designed to match Board guardrail

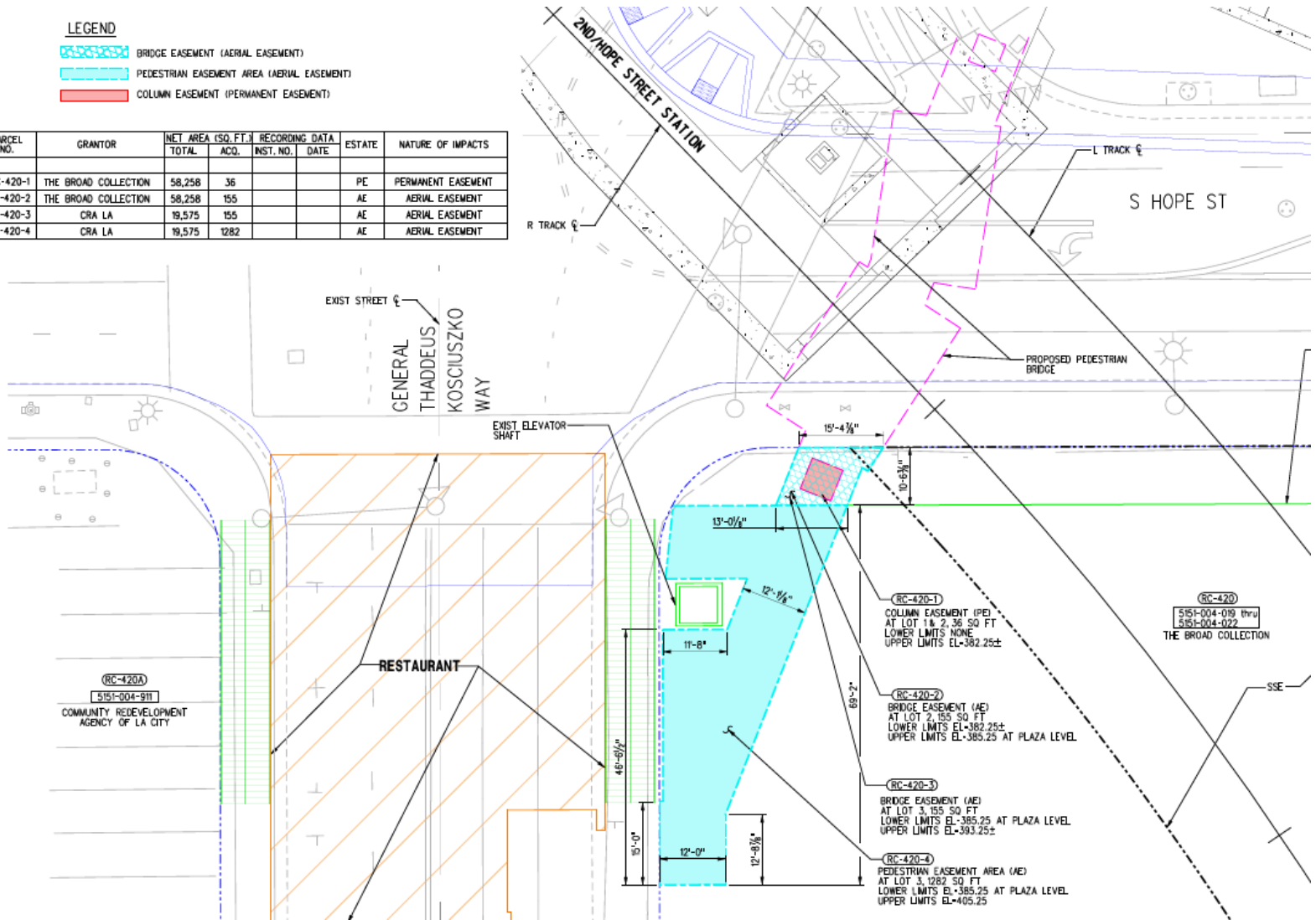


Easement Area

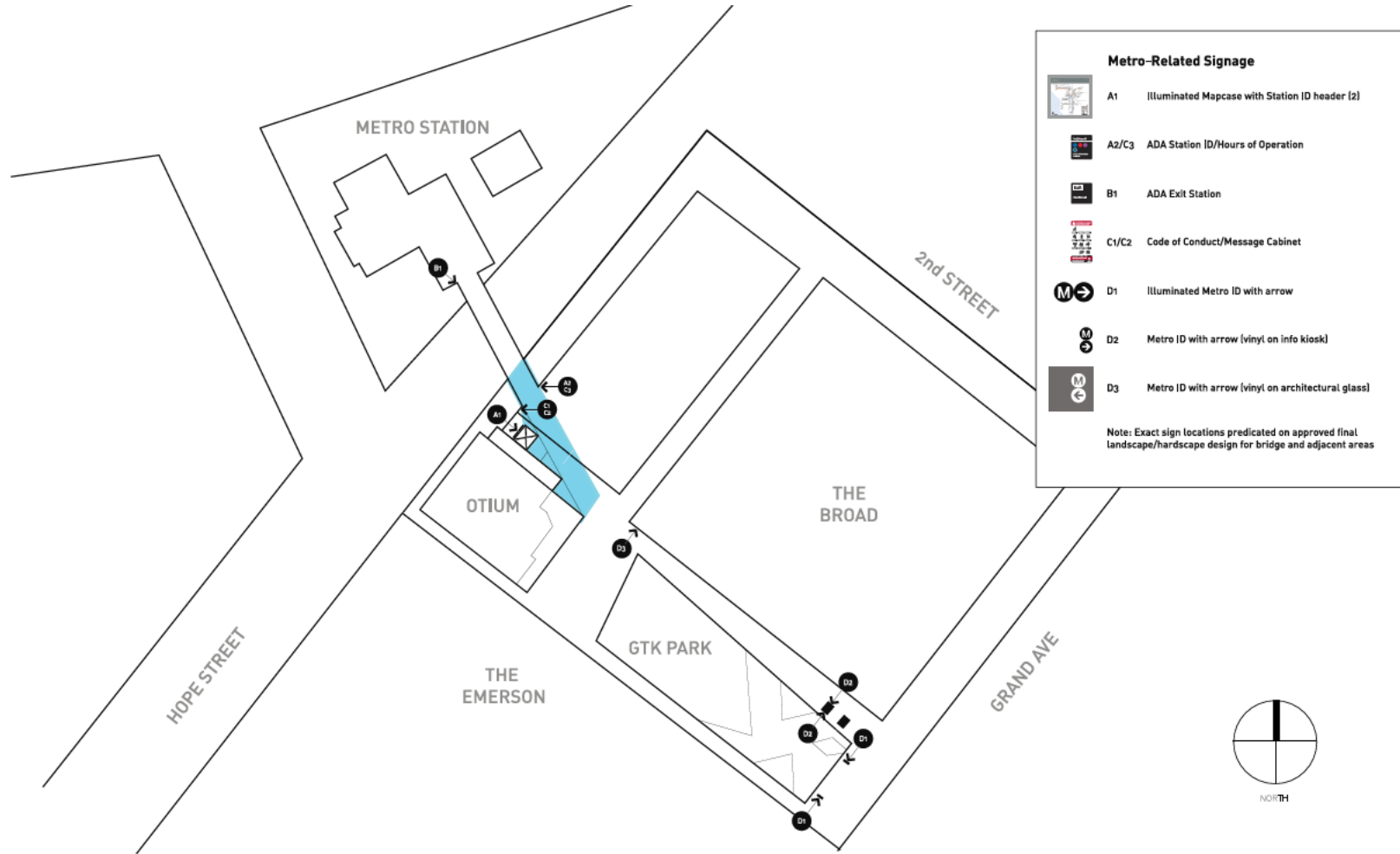
LEGEND

-  BRIDGE EASEMENT (AERIAL EASEMENT)
-  PEDESTRIAN EASEMENT AREA (AERIAL EASEMENT)
-  COLUMN EASEMENT (PERMANENT EASEMENT)

PARCEL NO.	GRANTOR	NET AREA (SQ. FT.)		RECORDING DATA		ESTATE	NATURE OF IMPACTS
		TOTAL	ACQ.	INST. NO.	DATE		
RC-420-1	THE BROAD COLLECTION	58,258	36			PE	PERMANENT EASEMENT
RC-420-2	THE BROAD COLLECTION	58,258	155			AE	AERIAL EASEMENT
RC-420-3	CRA LA	19,575	155			AE	AERIAL EASEMENT
RC-420-4	CRA LA	19,575	1282			AE	AERIAL EASEMENT



Conceptual Signage Plan



Estimated Construction Schedule

