

A large, stylized letter 'M' is positioned at the top of the page. It is composed of several white, rectangular blocks with a slight 3D effect, set against a dark green circular background. The background of the entire slide features a large, curved orange shape on the left and bottom, and a dark grey/black area at the bottom.

# Metro Systemwide Station Design Standards Policy



**Metro**

Planning and Programming Committee

January 17, 2018

# Design Standards Development

- Systemwide Station Design “kit-of-parts” developed in 2012
- Project goals:
  - improve legibility and maintainability
  - raise the bar on station design
- Design Standards developed with Metro inter-departmental coordination
- 18 new stations under construction or design apply kit-of-parts design elements and materials

# Design Principles for New Stations

## Safe

Open lines of sight for passengers and customers

## Smart

Contemporary design that is easy to identify, access and navigate

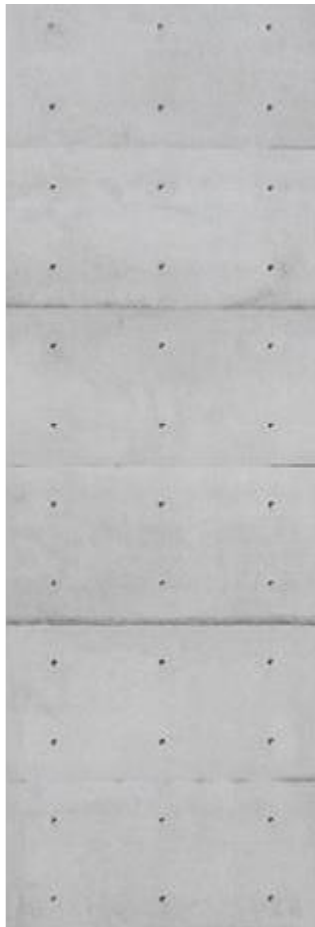
## Clean

High Performance Materials

## Green

Sustainable building materials and landscaping

# Materials



*CONCRETE*

*STAINLESS STEEL*

*GLASS*

# Portal Entrance - Systemwide Station Design



# Wilshire/Western Prototype Canopy



# Crenshaw/LAX



Downtown Inglewood Station

# Purple Line Extension





# Regional Connector



1<sup>st</sup>/Central Station

# Design Variances from Kit-of-Parts

- Local jurisdictions and other third parties may request design modifications or enhancements for individual stations.
- Requests for design modifications and enhancements are subject to Board Approval and Metro's Supplemental Modifications and Betterments Policy.
- Requestors shall cover related additional design, construction, operation and maintenance costs, as required by Board.



Thank you.



Metro®