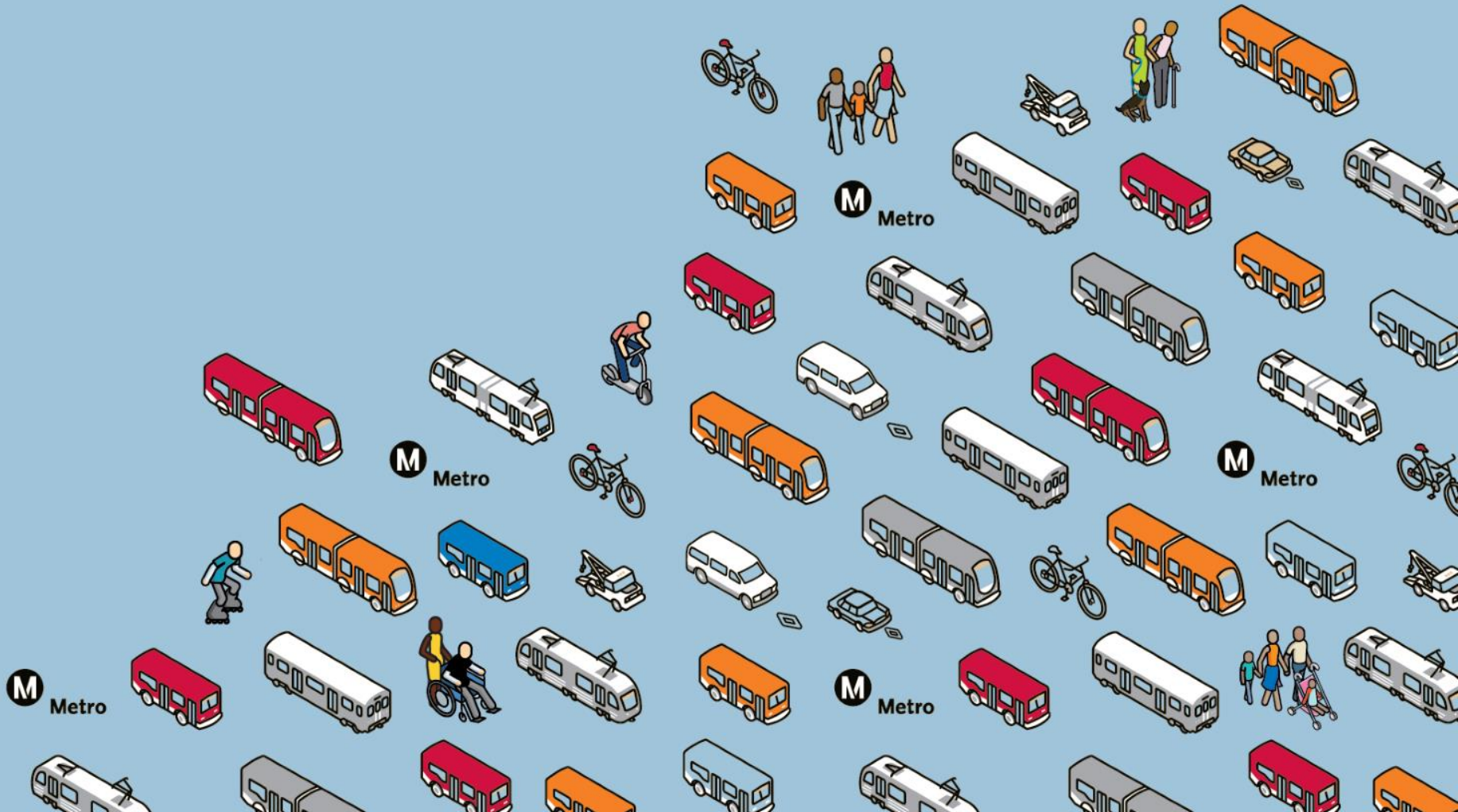


# Inglewood First/Last Mile Plan

---

Planning and Programming Committee

February 20, 2019



# Recommendation

---

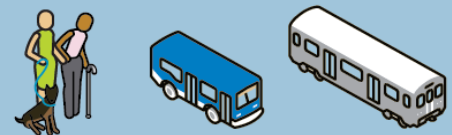
## A. ADOPT Inglewood First/Last Mile Plan



# Background

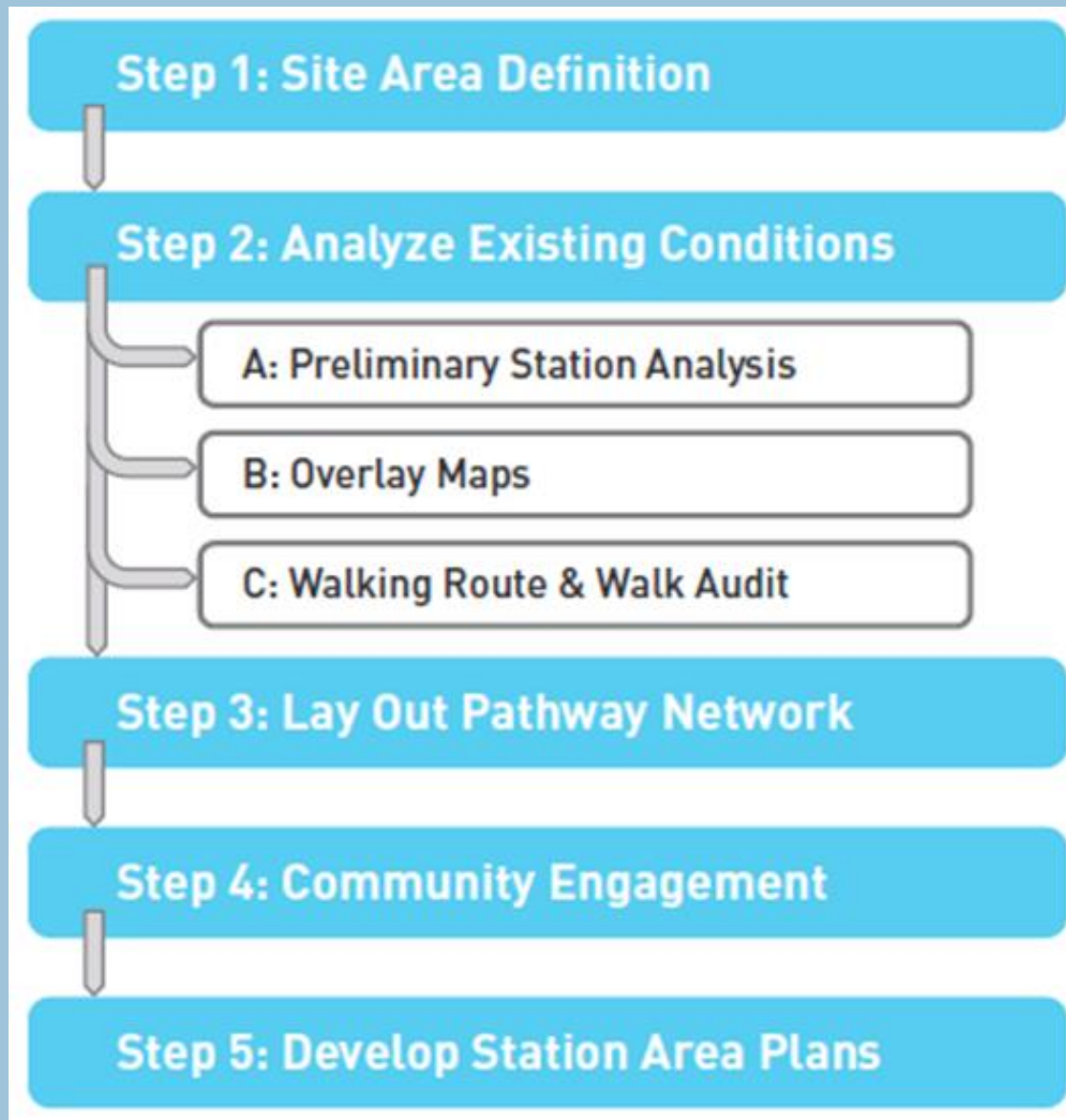
---

- First/Last Mile (FLM) planning for 4 stations within and around the City of Inglewood
  - Fairview Heights station (Crenshaw/LAX Line)
  - Downtown Inglewood station (Crenshaw/LAX Line)
  - Westchester/Veterans station (Crenshaw/LAX Line)
  - Crenshaw station (Green Line)
- Agreement with Metro and the City of Inglewood on 3% local match contribution



# Process

---



Metro®





# Community Engagement

- Executed FLM methodology
  - 3 days of walk audits at all 4 stations
  - 4 innovative community events featuring:
    - Pop-up and interactive elements
    - Traditional workshop discussions
    - Giveaways



# Proposed FLM Improvements

---

- Range of pedestrian/bicycle improvements:
  - Enhanced crosswalks
  - Street trees and planting
  - Pedestrian-scale lighting
  - Bicycle facilities
  - Others
- Proposed projects to complement committed efforts around the city



Metro®



# Thank you

---

