

Draft 2020 Long Range Transportation Plan for Public Comment



Planning & Programming Committee

May 20, 2020

L RTP is Metro's Part of SCAG RTP/SCS

L RTP Meets Conformity/Funding Requirements

- > Financially Constrained, Technical Analysis for SCAG RTP/SCS
- > Major Project Inclusion Required for State & Federal Funding Eligibility

Time to Adopt

- > L RTP Developed in Alignment with SCAG's Schedule
- > SCAG Adopted 2020 RTP/SCS May 7th (Transportation portion)

Document Amended As Needed

- > SCAG RTP/SCS & L RTP: Both Living Documents
 - Update/Amend to Address Project & Plan Changes

Everything we do supports our mission.

We're using a robust mix of *projects, programs, policies and plans.*

 *Long Range Transportation Plan*



We're passionate about creating *sustainable and equitable* solutions.

 *Moving Beyond Sustainability Plan*  *Equity Platform*



We take our *responsibilities* seriously.

 *Accountability*  *Collaboration*  *Innovation*  *Safety*



We're guided by our *strategic plan.*

 *Vision 2028 Strategic Plan*

We have a plan for a better LA.

Our mission is improving mobility to enhance the quality of life for you and all who live, work and play in LA County. We're creating:

Better Transit

Providing more transportation options and improving service

Less Congestion

Managing the transportation system to ensure people spend less time in traffic

Complete Streets

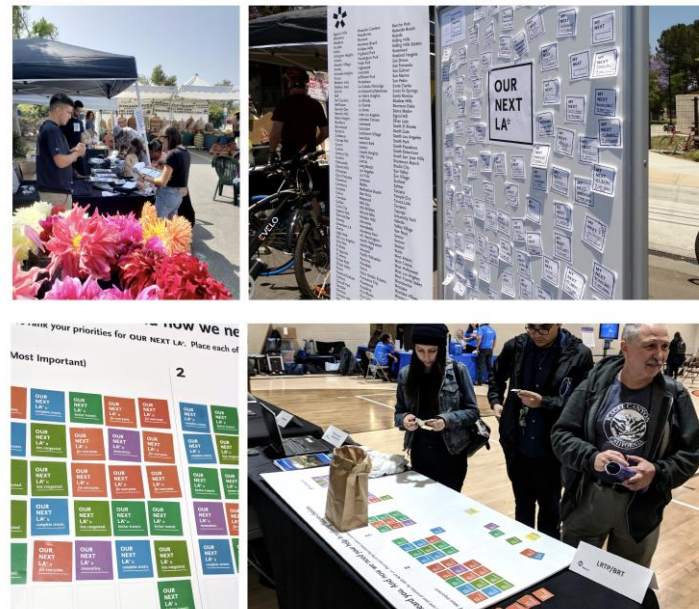
Making streets and sidewalks safe and convenient for all

Access to Opportunity

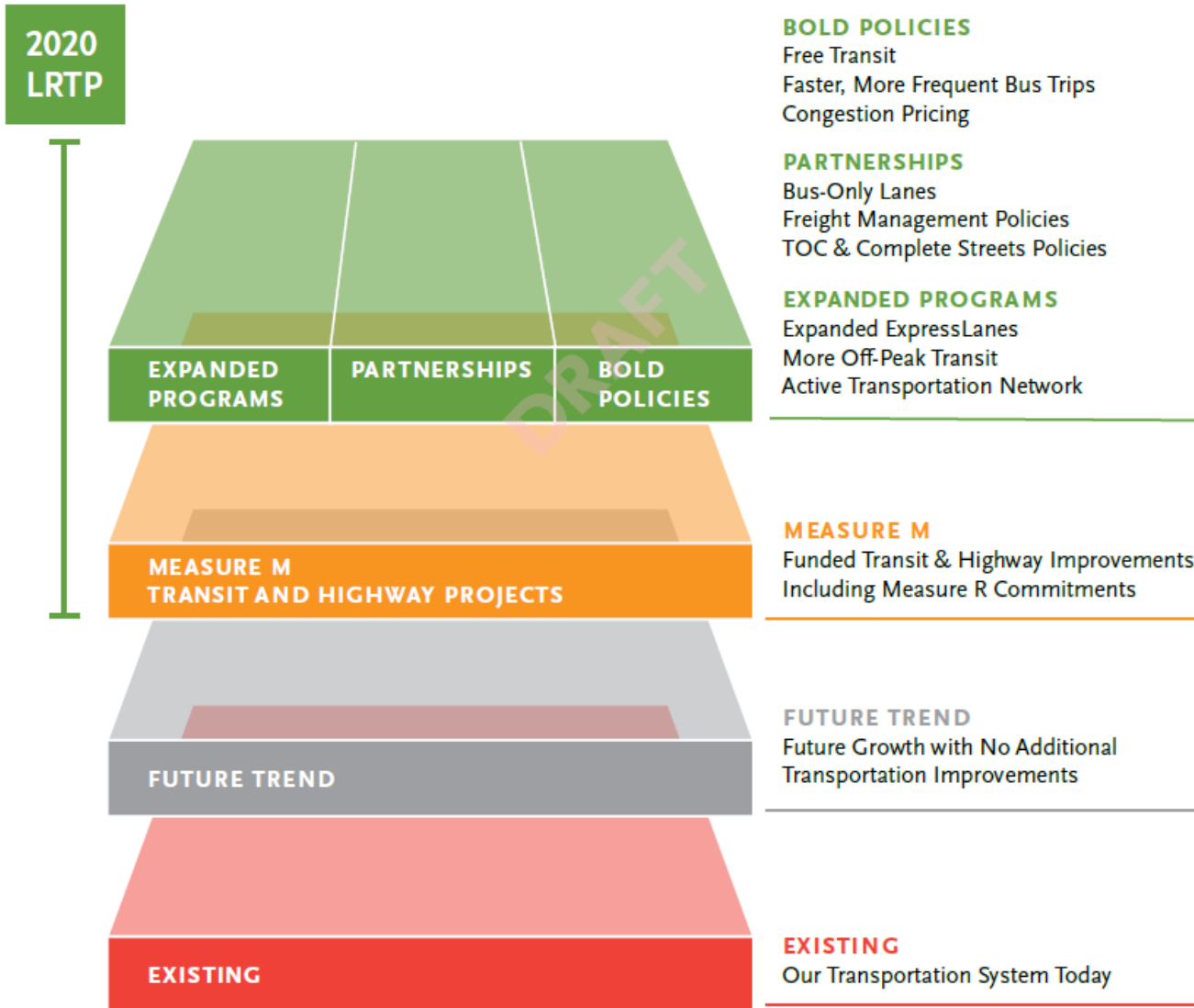
Investing in communities to create jobs and housing near transit

Public Engagement:

- > **77** community events
- > **28** public meetings
- > **20,000** survey responses
- > **50,000** completed priority rankings

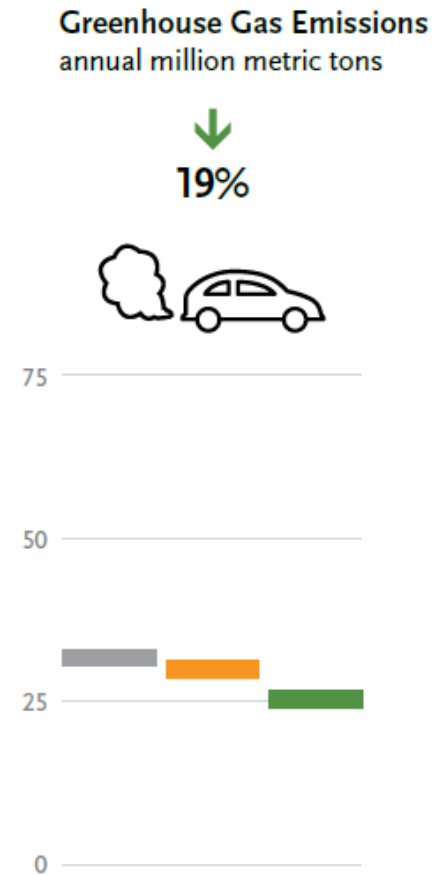
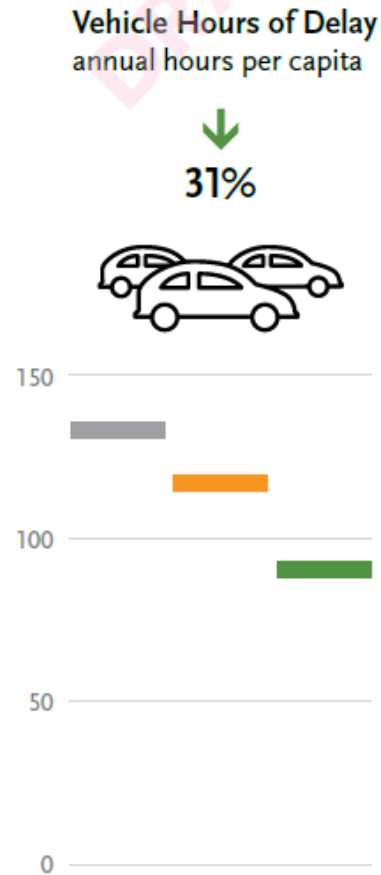
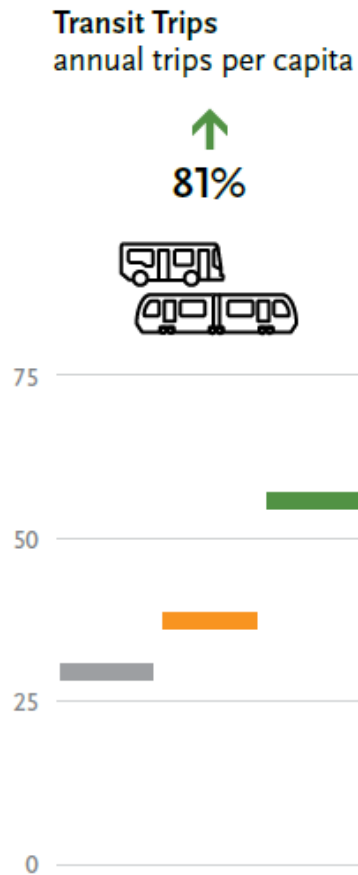


Elements of the 2020 LRTP



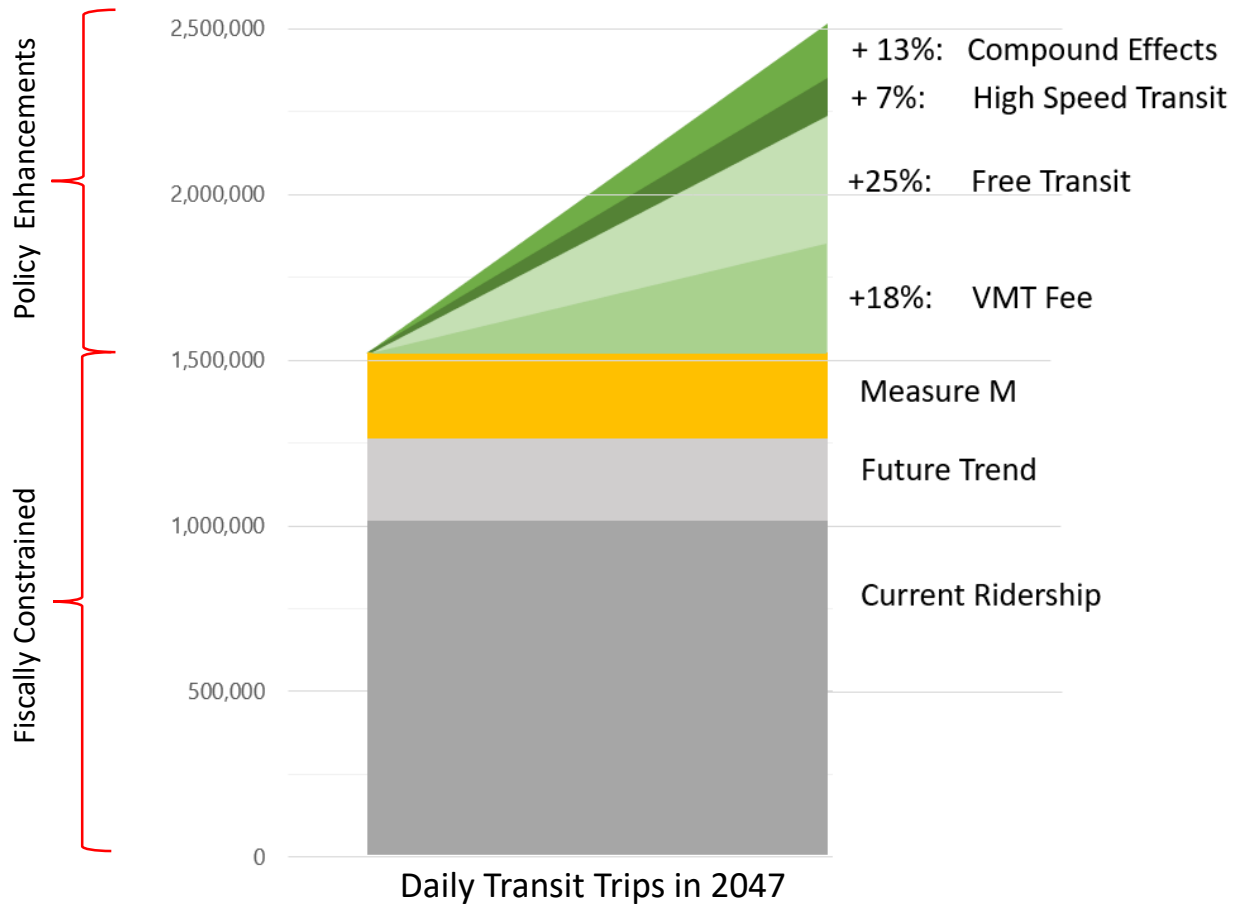
Benefits of the 2020 LRTP

- Future Trend (2047)
- With Measure M Alone (2047)
- With 2020 LRTP (2047)



2020 LRTP: Expanding Beyond Measure M

Increasing Transit Ridership

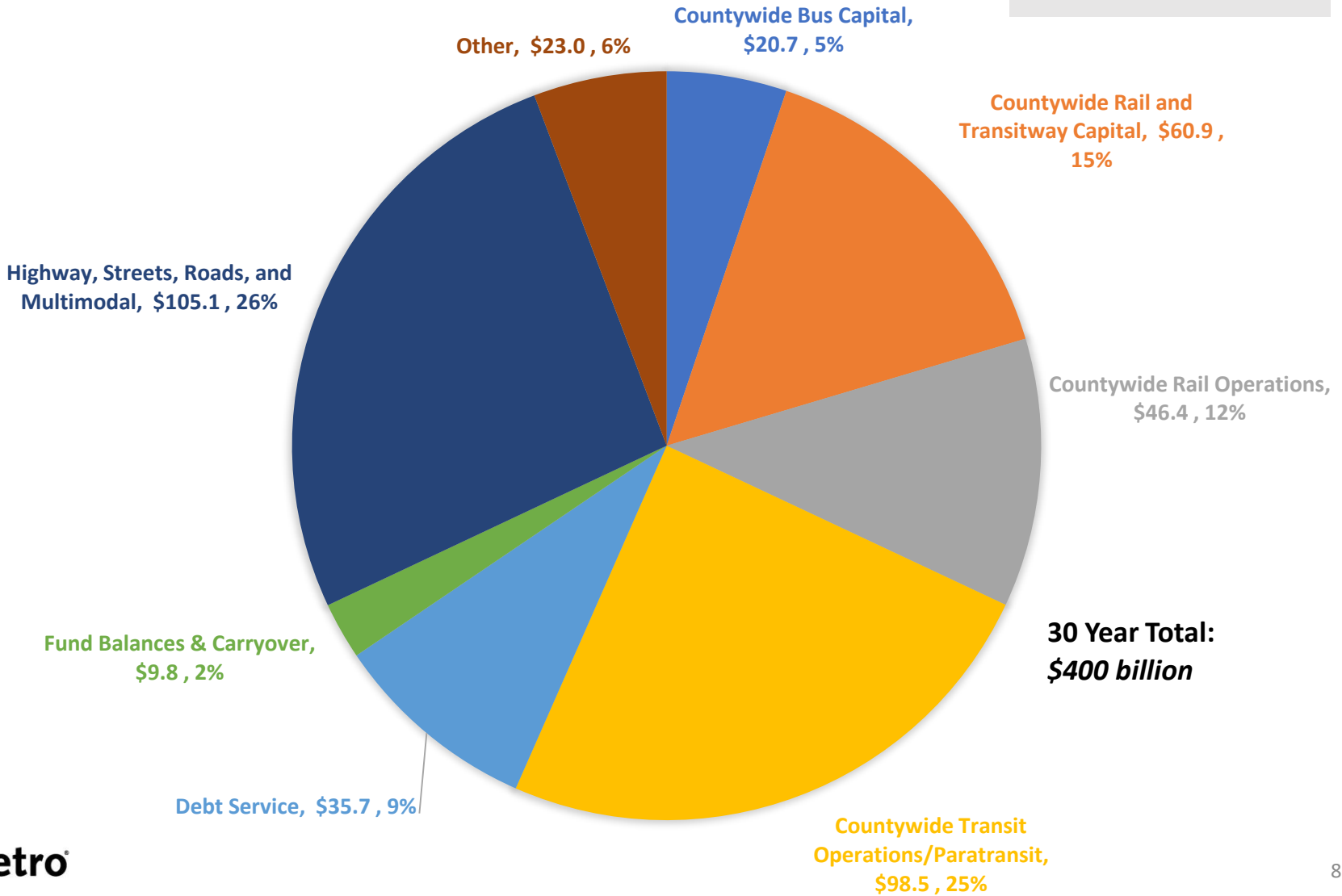


- Approximately 1% improvement in daily transit trips for every 1¢ charged per mile.
- A fully subsidized transit trip for all riders may increase ridership up to 25%.

LA County Investments

Countywide Investment, FY2021 – FY 2050, in \$billions

Metro controls almost $\frac{3}{4}$ of all LA County transportation funding



**30 Year Total:
\$400 billion**



Other: includes safety net program, agency-wide admin and capital, and regulatory oversight.

Beyond the Capital Program

The 2020 LRTP will:

- > Provide better options
 - Bus speed improvements
 - Expanded ExpressLanes network
 - First/Last Mile Connections
 - Transit Oriented Communities
- > Incentivize transit and active modes
 - Congestion pricing/ VMT fee
 - More affordable transit fares

Next Steps

- > 2020 LRTP Adoption Schedule
 - Public Comment (5/29-7/13/2020)
 - Request Board Adoption (Summer)
- > Short-Range Transportation Plan