

# Union Station Metro Bike Hub

# Recommendation

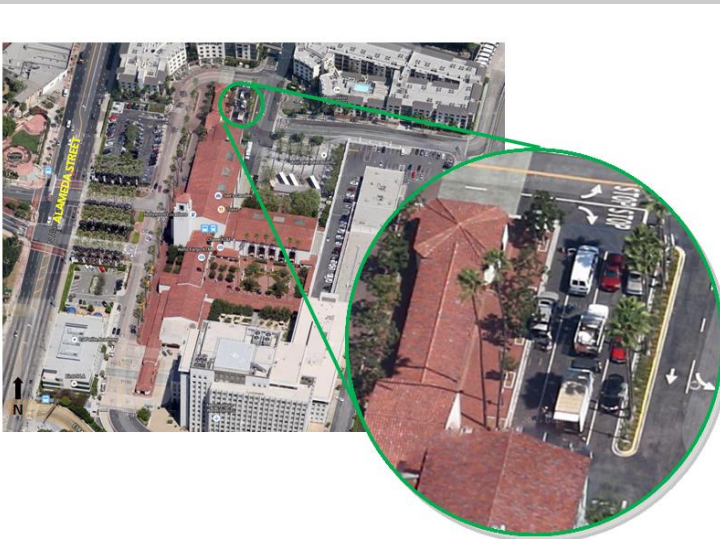
- **Authorize increase in life of project budget for Union Station Metro Bike Hub from \$1.32 million to \$2.47 million, an increase of \$1.15 million**

# Metro Bike Hub Program

- Provides secure bike parking at key Metro stations
- Reduces the need for patrons to bring bikes onto buses & trains
- Open to members 24/7
- Staffed part time
- Services include tune ups, flat fixes, repairs & retail items
- Provide resources to support bike education, safety, and transit
- Current location at El Monte Station
- Future Locations at Hollywood/Vine, Culver City and Union Station



# Union Station Metro Bike Hub



- **Original LOP established locating the Metro Bike Hub in the East Portal on parking level P1; this area has since been converted to ADA parking**
- **Newly identified location is outside the historic station near the north breezeway**
- **Design must preserve integrity of historic Union Station**
- **Estimated costs exceed the current LOP due to the project being freestanding and due to the need for site costs**

# Next Steps

- Notice to Proceed issued to selected SBE contractor
- Construction commences March 2017
- Anticipated opening Fall 2017

